

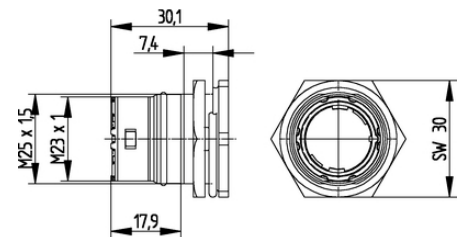
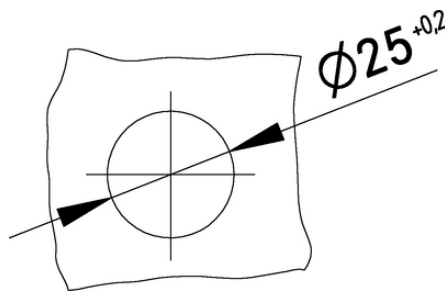
EPIC® SIGNAL M23 G6

Circular connectors for Servo Cables and encoders

EPIC® M23 panel base for bore hole, back wall assembly

Info

Made in Germany



Mechanical and plant engineering



Wind Energy



Good chemical resistance



Robust



Interference signals

Benefits

Fast and easy assembly

Only one M25 bore hole necessary

Application range

Plant engineering

Servo drives and servo assemblies

Measurement and control technology

Technical Data

Classification ETIM 5:

ETIM 5.0 Class-ID: EC000437

Last Update (06.09.2020)

©2020 Lapp Group - Technical changes reserved

Product Management www.lappkabel.de

You can find the current technical data in the corresponding data sheet.

PN 0456 / 02_03.16

EPIC® SIGNAL M23 G6

| | |
|------------------------|---|
| Classification ETIM 6: | ETIM 5.0 Class-Description: Housing for industrial connectors ETIM 6.0 Class-ID: EC000437 ETIM 6.0 Class-Description: Housing for industrial connectors |
| Material: | Housing: nickel-plated zinc die-casting Sealing: FPM |
| Protection rating: | IP68 (10h/1m) |
| VDE-tested: | Certified production control: VDE-REG. no. C24 (according to EN 61984, SELV according to DIN VDE 0100-410 has to be guaranteed) UL File Number: E249137 |
| Temperature range: | -25°C up to +125°C |

Note

Photographs and graphics are not to scale and do not represent detailed images of the respective products.
Prices are net prices without VAT and surcharges. Sale to business customers only.

EPIC® SIGNAL M23 G6

| Article number | Article | Coding | Fastening type | Pieces / PU |
|---|---------|-----------|----------------------|-------------|
| Type M23 G6 panel-mount box, rear wall mounting | | | | |
| 44420071 | M23 G6 | black (N) | M25 x 1.5 (with nut) | 5 |
| 44420073 | M23 G6 | black (N) | M25 x 1.5 (with nut) | 20 |

Last Update (06.09.2020)

©2020 Lapp Group - Technical changes reserved

Product Management www.lappkabel.de

You can find the current technical data in the corresponding data sheet.

PN 0456 / 02_03.16