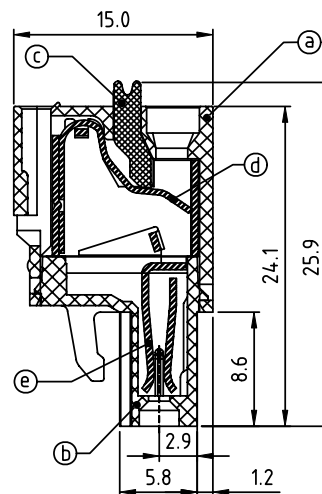
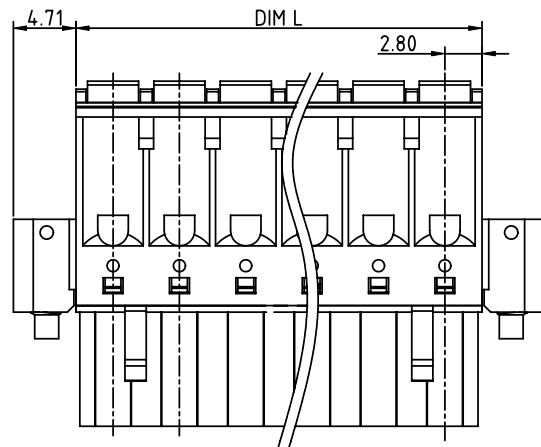
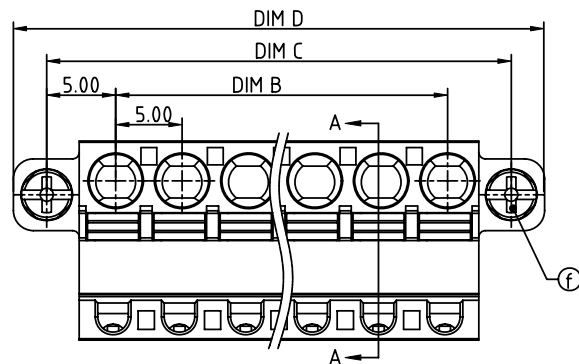
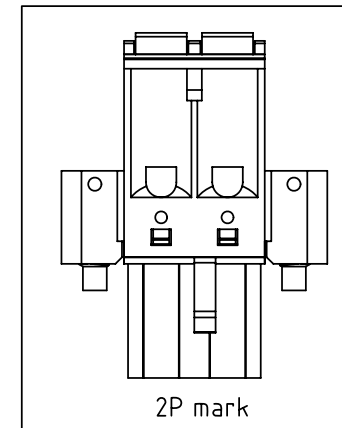


PRODUCT NUMBER	PITCH
HWxx70x200J0G	5.00 mm



SECTION A-A



Material:

- Item a Top body: Thermoplastic (UL94V-0)
- Item b Bottom body: Thermoplastic (UL94V-0)
- Item c Terminal lever: Thermoplastic (UL94V-0) Orange(RAL2011/P)
- Item d Spring clamp: Stainless Steel
- Item e Female contact: PhBz (CuSn) Tin plated
- Item f Flange screw: Steel "+/-" combination type Zinc plating M2.5

Electrical

- Voltage rating: 300V
- Current rating: 10A
- Solid wire(AWG): 12-26
- Stranded wire(AWG): 12-26
- Wire strip length: 8-9mm
- Withstanding Voltage: 1.6KV
- Operating temperature: -40°C to +115°C
- Safety Approval: cULus

N=Number of poles

Dim L=(N-1)×5.00+5.6
Dim B=(N-1)×5.00
Dim C=(N-1)×5.00+10.0
Dim D=(N-1)×5.00+15.02

Poles	Tolerance
2P-6P	±0.15
7P-12P	±0.20
13P-18P	±0.25
19P-24P	±0.30

PART NO.: HW xx 7 0 x 2 00J0 G

Solid block
No. of poles
02 2 poles
03 3 poles
...
24 24 poles

Color
0 Black (RAL9005)
2 Red (RAL3001/D)
3 Orange(RAL2011/P)
4 Yellow(RAL1018/A)
5 Green(RAL6018/T)
6 Blue (RAL5015/A)
8 Grey(RAL7035/D)
9 White(RAL1102)
C Green(RAL6018/U)

RoHS compliant
(lead<4%)
In copper Alloy

mat'l. code				surface ASME Y14.5	tolerance ASME Y14.5	projection	product family			
ltr	ecn	no	dr	date	tolerances unless otherwise specified		TERMINAL BLOCK			
					angles	X.±0.5	title			
					dr	X.X±0.3	TERMINAL BLOCK			
					engr	X.XX±0.1	SPRING CLAMP, PLUGGABLE PLUG, WITH FLANGE			
					chr		CONTACT ON DOWN SIDE			
					appd		dwg no			
							sheet 1 of 1			
							size			
							A4			
							type			
							CUSTOMER Drawing			
sheet index	revision	A								
	sheet	1								