

[Terminals & Splices](#) > [Terminal Housings, Insulation Sleeves & Blocks](#) > [Crimp Terminal Housings](#)

250 HIGH TEMP POS LOCK HSG LCP



Positive Lock | Positive Lock 250

TE Part # **1969820-1**

TE Internal #: **1969820-1**

Terminal & Splice Type : **Receptacle**

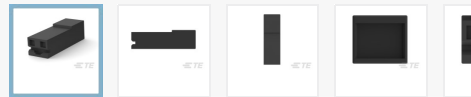
Housing Type : **Receptacle Housing**

Number of Positions : **1**

Terminal Orientation : **Straight**

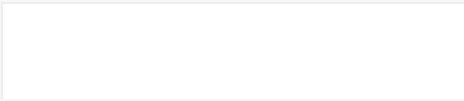
UL Flammability Rating : **UL 94V-0**

[Similar Products](#)



ORDER SAMPLES

Compatible Parts & Tooling



We are here to help!
Get in touch with our product experts.

CHAT WITH US

EMAIL US

CALL US

Feedback

Documents	Features	Product Compliance
Product Drawings	250 HIGH TEMP POS LOCK HSG LCP 250 HIGH TEMP POS LOCK HSG LCP English	
CAD Files	3D PDF 3D_CVM_CVM_1969820-1_A.pdf 3D Customer View Model ENG_CVM_CVM_1969820-1_A.2d_dxf.zip English ENG_CVM_CVM_1969820-1_A.3d_igs.zip English ENG_CVM_CVM_1969820-1_A.3d_stp.zip English	
Agency Approvals	UL Report ENG_AAD_UL_E28476_19820308_S.pdf English	
Please review product documents or contact us for the latest agency approval information. Please Note: Use the Product Drawing for all design activity.		
Product Type Features	Terminates To : Wire & Cable Housing Type : Receptacle Housing Sealable : No Insulated : No Product Type : Terminal Housing	

Configuration Features
Number of Positions : **1**

Body Features
Housing Color : **Black**
Mating Retention : **With**
Mating Alignment : **With**

Contact Features
Terminal & Splice Type : **Receptacle**
Terminal Orientation : **Straight**

Mechanical Attachment
Mounting Style : **Free Hanging**
Mating Retention Type : **Latch**
Mating Alignment Type : **Polarization**

Housing Features
Housing Material : **LCP**

Usage Conditions
Operating Temperature Range : **-40 – 240 °C [-40 – 464 °F]**

Industry Standards
UL Flammability Rating : **UL 94V-0**

Packaging Features
Packaging Method : **Bag**

EU RoHS Directive
2011/65/EU

EU RoHS Directive with Phthalates Amendment
2011/65/EU,
2015/863/EU

The 4 Phthalates substances of amendment 2015/863/EU only become restricted as of 22 July 2019 for all electrical and electronic equipment, apart from Categories 8 (medical devices) and 9 (monitoring and control equipment) for which the restriction applies as of 22 July 2021.

EU ELV Directive
2000/53/EC

China RoHS 2 Directive MIIT
Order No 32, 2016

EU REACH Regulation (EC) No. 1907/2006
Current ECHA Candidate List: **JAN 2019 (197)**
Candidate List Declared Against: **JAN 2018 (181)**



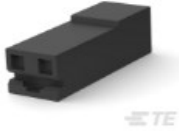
Halogen Content	
Solder Process Capability	Not reviewed for solder process capability
Statement of Compliance	Statement of Compliance pdf
Compliance Documents	There may be Environmental Compliance related documents on the DOCUMENTATION Tab
Disclaimer	<p>This information is provided based on reasonable inquiry of our suppliers and represents our current actual knowledge based on the information they provided. This information is subject to change. The part numbers that TE has identified as EU RoHS compliant have a maximum concentration of 0.1% by weight in homogenous materials for lead, hexavalent chromium, mercury, PBB, PBDE, and 0.01% for cadmium, or qualify for an exemption to these limits as defined in the Annexes of Directive 2011/65/EU (RoHS2). Finished electrical and electronic equipment products will be CE marked as required by Directive 2011/65/EU. Components may not be CE marked. Additionally, the part numbers that TE has identified as EU ELV compliant have a maximum concentration of 0.1% by weight in homogenous materials for lead, hexavalent chromium, and mercury, and 0.01% for cadmium, or qualify for an exemption to these limits as defined in the Annexes of Directive 2000/53/EC (ELV). Regarding the REACH Regulations, TE's information on SVHC in articles for this part number is still based on the European Chemical Agency (ECHA) 'Guidance on requirements for substances in articles'(Version: 2, April 2011), applying the 0.1% weight on weight concentration threshold at the finished product level. TE is aware of the European Court of Justice ruling of September 10th, 2015 also known as O5A (Once An Article Always An Article) stating that, in case of 'complex object', the threshold for a SVHC must be applied to both the product as a whole and simultaneously to each of the articles forming part of its composition. TE has evaluated this ruling based on the new ECHA "Guidance on requirements for substances in articles" (June 2017, version 4.0) and will be updating its statements accordingly in 2018.</p>

Products with Comparable Specs

THIS PRODUCT

TOP RESULTS 

250 HIGH TEMP POS LOCK
HSG LCP



Terminal & Splice Type : Receptacle
Housing Type : Receptacle Housing
Number of Positions : 1
Terminal Orientation : Straight
UL Flammability Rating : UL 94V-0

187 HIGH TEMP POS LOCK
HSG LCP



Terminal & Splice Type : Receptacle
Housing Type : Receptacle Housing
Number of Positions : 1
Terminal Orientation : Straight
UL Flammability Rating : UL 94V-0

POSITIVE LOCK (PL) .250 (6.3
MM)



From **In-Stock**
Terminal & Splice Type : Receptacle
Housing Type : Receptacle Housing
Number of Positions : 1
Terminal Orientation : Straight
UL Flammability Rating : UL 94V-2

PL 250 HOUSING BLACK
NYLON



From **In-Stock**
Terminal & Splice Type : Receptacle
Housing Type : Receptacle Housing
Number of Positions : 1
Terminal Orientation : Straight
UL Flammability Rating : UL 94V-2

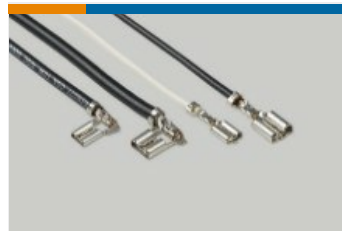
Also in the Series | [Positive Lock 250](#)



[Crimp Terminal Housings \(190\)](#)



[Insulation Boots & Sleeves \(6\)](#)



[Quick Disconnects \(179\)](#)



[Wire-to-Board Connector Contacts \(1\)](#)

[ABOUT TE CONNECTIVITY](#)

[FOR PARTNERS](#)

[SUPPORT](#)

[CALL US](#)

[LIVE CHAT](#)

[UNITED STATES \(EN\)](#)