



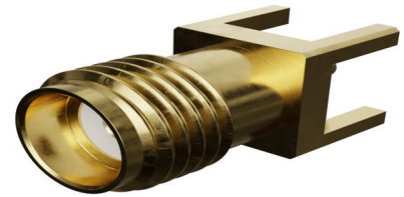
**Part Number :** [733910060](#)

**Product Description :** SMA Jack, Straight, PCB Receptacle, Through Hole, Brass Body, Gold (Au) Plated, 80 Pieces Per Tray, 50 Ohms

**Series Number :** 73391

**Status :** Active

**Product Category :** RF / Coaxial Connectors



---

## Documents and Resources

### Drawings

[733910060\\_sd.pdf](#)

### 3D Models and Design Files

[STEP AP242](#)

[SOLIDWORKS](#)


[Creo](#)

[Symbol and Footprint \(Multi-Format\)](#)

---

## Product Environment Compliance

### Compliance

GADSL/IMDS	Not Relevant
China RoHS	 per SJ/T 11365-2006
EU ELV	Compliant with Exemption 3 per 2000/53/EC
Low-Halogen Status	Low-Halogen per IEC 61249-2-21
REACH SVHC	Contains Lead per D(2025)4165-DC (25 June 2025)
EU RoHS	Compliant with Exemption 6(c) per EU 2015/863

### Compliance Statements

- EU RoHS
- REACH SVHC
- Low-Halogen

## Industry Documents

- IPC 1752A Class C
- IPC 1752A Class D
- Molex Product Compliance Declaration
- IEC-62474
- chemSHERPA (xml)

## Substances of Interest

- PFAS

## EU RoHS Certificate of Compliance

## Additional Product Compliance Information

---

## Part Details

### General

Status	Active
Category	RF / Coaxial Connectors
Series	73391
Description	SMA Jack, Straight, PCB Receptacle, Through Hole, Brass Body, Gold (Au) Plated, 80 Pieces Per Tray, 50 Ohms
Application	RF
Product Name	SMA
Style	PCB
Type	Subminiature
UPC	800754259897

### Electrical

Frequency	18 GHz
Impedance	50Ω
Power / Voltage	VOLTAGE: 500 Vrms@Sea Level

### Physical

Cable Attachment	N/A
Gender	Jack
Keying to Mating Part	N/A
Net Weight	1.425/g
Orientation	Straight

Packaging Type	Tray
Panel Mount	No
Panel Mount Method	N/A
PCB Mounting	Through Hole
PCB Thickness - Recommended	3.20mm
Reverse Polar	No
Wire/Cable Type	N/A

### Solder Process Data

Max-Duration	10
Lead-Free Process Capability	SMC&WAVE
Max-Cycle	2
Max-Temp	260

---

This document was generated on Apr 23, 2026