



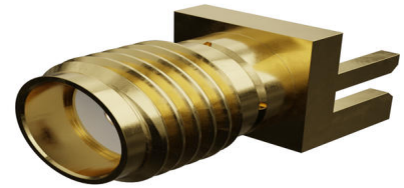
**Part Number :** [732514431](#)

**Product Description :** SMA Jack, Straight, PCB Receptacle, End Launch, Brass Body, Gold (Au) Plating, Tray, 50 Ohms

**Series Number :** 73251

**Status :** Active

**Product Category :** RF / Coaxial Connectors



---

## Documents and Resources

### Drawings

[732514431\\_sd.pdf](#)

### 3D Models and Design Files

[STEP AP242](#)


[SOLIDWORKS](#)

[Creo](#)

---

## Product Environment Compliance

### Compliance

GADSL/IMDS	Not Relevant
China RoHS	 per SJ/T 11365-2006
EU ELV	Not Relevant
Low-Halogen Status	Low-Halogen per IEC 61249-2-21
REACH SVHC	Contains Lead per D(2020)9139-DC (19 Jan 2021)
EU RoHS	Compliant with Exemption 6(c) per EU 2015/863

### Compliance Statements

- EU RoHS
- REACH SVHC
- Low-Halogen

### Industry Documents

- IPC 1752A Class C

- IPC 1752A Class D
- Molex Product Compliance Declaration
- IEC-62474
- chemSHERPA (xml)

Substances of Interest

- PFAS

EU RoHS Certificate of Compliance

Additional Product Compliance Information

---

## Part Details

### General

Status	Active
Category	RF / Coaxial Connectors
Series	73251
Description	SMA Jack, Straight, PCB Receptacle, End Launch, Brass Body, Gold (Au) Plating, Tray, 50 Ohms
Application	RF
Product Name	SMA
Style	PCB
Type	Subminiature
UPC	884982655140

### Electrical

Frequency	18 GHz
Impedance	50Ω
Power / Voltage	VOLTAGE: 500 Vrms@Sea Level

### Physical

Cable Attachment	N/A
Gender	Jack
Keying to Mating Part	N/A
Net Weight	1.401/g
Orientation	Straight
Packaging Type	Tray

Panel Mount	No
Panel Mount Method	N/A
PCB Mounting	Edge Mount
PCB Thickness - Recommended	1.00mm
Reverse Polar	No
Wire/Cable Type	N/A

### Solder Process Data

Max-Duration	10
Lead-Free Process Capability	REFLOW
Max-Cycle	2
Max-Temp	260

---

This document was generated on Dec 21, 2025