

CNN_E / CNN / CNL SERIES LIFT TRUCK FUSES

32/48/80 Vdc • Fast-Acting and Very Fast-Acting • 10-800 A



Description

CNN_E fuses are rated for applications up to 80 Vdc. As fork lift trucks voltages increase, circuit protection needs to be rated higher than the standard CNN products to handle the increased voltage. The CNN_E is considered very fast-acting for quicker reaction time.

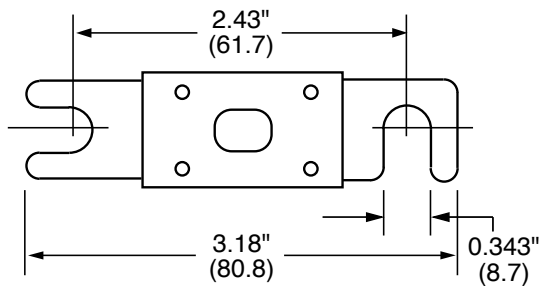
Features/Benefits

- Up to 80 Vdc Protection
- Window shows fuse status
- 2,500 A interrupting rating
- Compact size saves space
- RoHS compliant and lead (Pb) free

Applications

- Lift Trucks
- Scissor Lifts
- Pallet Movers
- Low Voltage Battery Powered Equipment

Dimensions inches (mm)



Specifications

Voltage Ratings

CNN_E: 80 Vdc / 125 Vac

CNN: 48 Vdc / 125 Vac

CNL: 32 Vdc / 32 Vac

Ampere Ratings

10 – 800 A*

Max. Interrupting Rating

2,500 A

Approval

UL Recognized (File: E71611)

Environmental

RoHS Compliant, Lead (Pb) Free

Country of Origin

Mexico (CNN_E only)

*See ordering information table for available amperages by series

Ordering Information

AMPERE RATINGS CNN_E (80 Vdc)					
35	80	150	250	350	700
40	90	175	275	400	800
50	100	200	300	500	—
60	125	225	325	600	—

AMPERE RATINGS CNN (48 Vdc)					
10	60	125	225	325	600
35	80	150	250	350	700
40	90	175	275	400	800
50	100	200	300	500	—

AMPERE RATINGS CNL (32 Vdc)					
35	80	150	250	350	—
40	100	175	275	400	—
50	125	200	300	500	—
60	130	225	325	—	—

SERIES	TYPE	VOLT DC	AMP	CATALOG NUMBER	ORDERING NUMBER
CNN_E	VERY-FAST-ACTING	80	200	CNN200E	OCNN200E.V
CNN	VERY FAST-ACTING	48	125	CNN125	OCNN125.V
CNL	FAST-ACTING	32	50	CNL050	OCNL050.V

Web Resources

80 Vdc: littelfuse.com/cnne

48 Vdc: littelfuse.com/cnn

32 Vdc: littelfuse.com/cnl

Recommended Fuse Block

LFFB0003Z - littelfuse.com/lffb