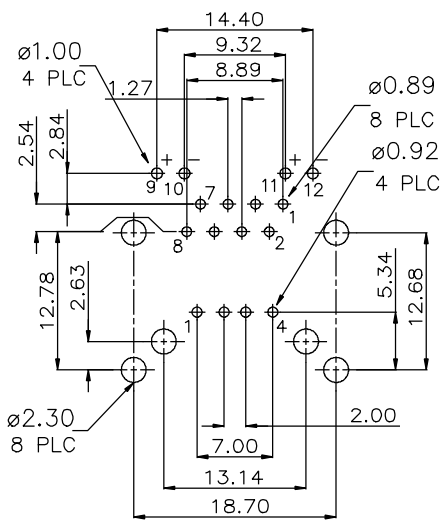
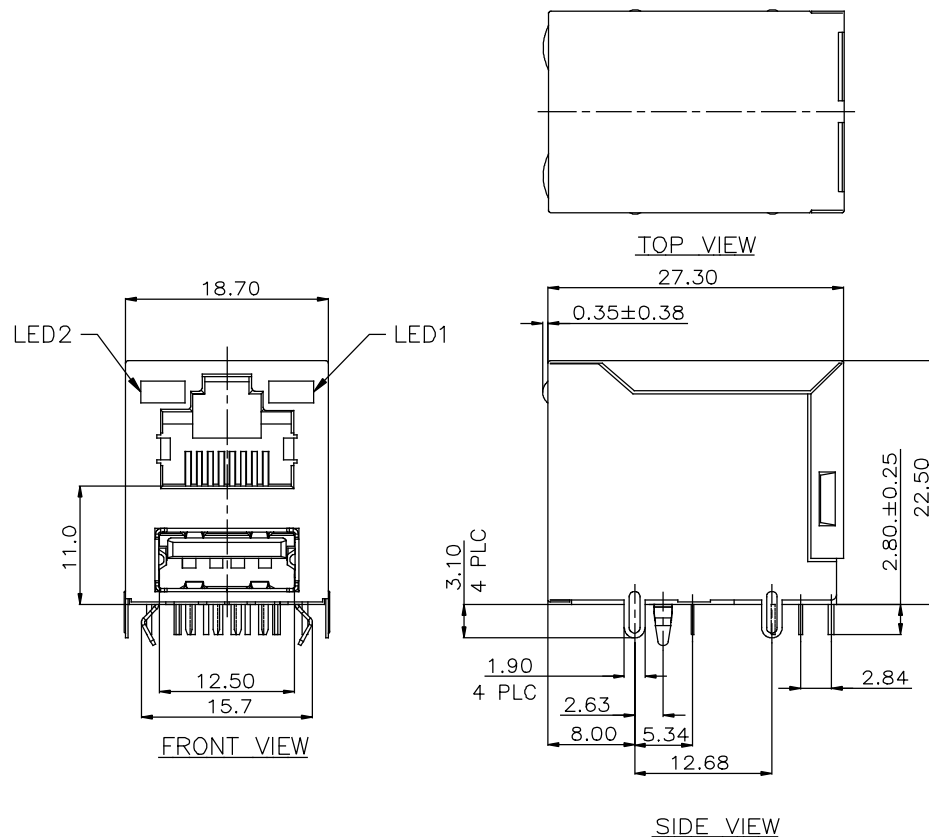


REVISIONS			
REV	DESCRIPTION, ECN, EAR NO.	DATE	APP'D
A	PROPOSAL	SEP 03/18	L.CHAN

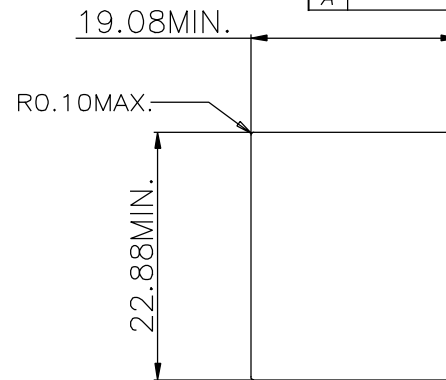


\oplus	0.13[.005]
----------	------------

POSITION DIMENSIONS
ARE BASIC



RECOMMENDED P.C.B. LAYOUT
(COMPONENT SIDE OF BOARD)
TOLERANCE: ± 0.05



RECOMMENDED PANEL CUTOUT

MATERIALS:

RJ:

HOUSING & COVER: ENGINEERING THERMOPLASTIC
FLAMMABILITY RATING UL 94V-0, COLOUR: BLACK

CONTACTS: PHOSPHOR BRONZE

PLATING: SELECTIVE GOLD PLATING ON MATING SURFACES
SEE AMPHENOL PART NUMBER FOR DETAIL.

50 μ " [1.27 MICRONS]

MIN. NICKEL UNDERPLATE

GOLD FLASH ON CONTACT TAILS.

SHIELD: BRASS PLATED WITH NICKEL.

USB:

HOUSING: ENGINEERING THERMOPLASTIC
FLAMMABILITY RATING UL 94V-0,
COLOUR: BLACK

CONTACTS: PHOSPHOR BRONZE

PLATING: SELECTIVE GOLD FLASH ON MATING SURFACES

50 μ " [1.27 MICRONS]

MIN. NICKEL UNDERPLATE

100μ" TIN PLATING ON CONTACT TAILS

SHIELD: BRASS PLATED WITH NICKEL.

AMPHENOL PARTNUMBER: RJE36-188-2XX3

GOLD PLATING

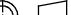

0 = GOLD FLASH

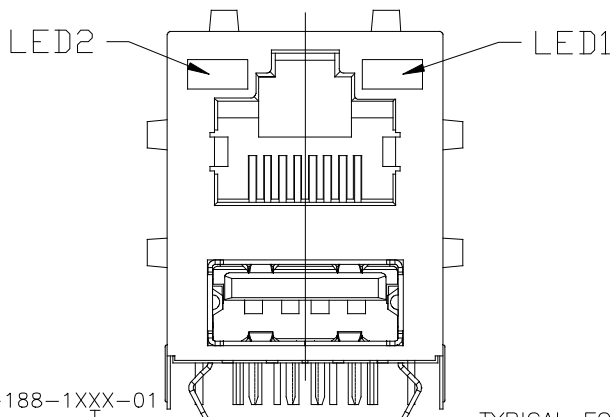
1 = 6 **μ** INCH

2 = 15 μ INCH

2 = 15 **μ** INCH
3 = 30 **μ** INCH

3 = 30 **μ** INCH
4 = 50 **μ** INCH

UNLESS SPECIFIED OTHERWISE		DRAWN <i>HANSON.C</i>		DATE SEP 03/18		Amphenol Canada Corp. Commercial Products							
PRIMARY UNITS MILLIMETER		CHECKED <i>AMY.Z</i>		SEP 03/18									
SECONDARY		M.E. APP'D				TITLE RJ45 OVER SINGLE USB 2.0 COMBO, DIP TYPE WITHOUT TABS, WITH LEDS OPTIONS -RoHS COMPLIANT							
REFERENCE IN PARENTHESES		Q.A. APP'D											
GENERAL TOLERANCES		DWG APPR. <i>L.CHAN</i>		SEP 03/18		DWG. NO. P-RJE36-188-2XX3							
1 DECIMAL PLACE ±0.30		ENG. REL. NO.											
2 DECIMAL PLACES ±0.25		REF.				REV A							
3 DECIMAL PLACES ±0.20		THIRD ANGLE PROJECTION		DO NOT SCALE DRAWING									
ANGULAR DEGREES ±1.0°						CODE ID NO. 03554		DWG SIZE: C		SCALE: <i>N/A</i>		SHEET 1 of 1	



EXAMPLE:

PART NUMBER: RJE36-188-1XXX-01

LED COLOR CODE

TYPICAL FOR SINGLE



CODE	LED 2 (LEFT)	LED 1 (RIGHT)	CODE	LED 2 (LEFT)	LED 1 (RIGHT)	CODE	LED 2 (LEFT)	LED 1 (RIGHT)
0	BLOCKED	BLOCKED	9	GREEN	BLOCKED	J	BiC RD/GR	YELLOW
1	YELLOW	GREEN	A	BiC GR/YE	BiC GR/YE	K	YELLOW	BiC GR/OR
2	BLOCKED	GREEN	B	BiC RD/GR	BiC RD/GR	L	BiC GR/YE	RED
3	YELLOW	BLOCKED	C	BiC RD/GR	BiC GR/YE	M	RED	YELLOW
4	GREEN	YELLOW	D	GREEN	BiC GR/YE	N	BiC GR/RD	BiC GR/YE
5	GREEN	GREEN	E	YELLOW	BiC GR/YE	P	GREEN	BiC RD/GR
6	YELLOW	YELLOW	F	BiC GR/YE	YELLOW	R	BiC GR/OR	GREEN
7	RED	GREEN	G	BiC GR/OR	BiC GR/OR	T	RED	RED
8	GREEN	RED	H	BiC GR/YE	GREEN	V	BiC RD/GR	GREEN
						W	ADDITIONAL	OPTIONS

EXAMPLE OF ADDITIONAL LED OPTIONS:

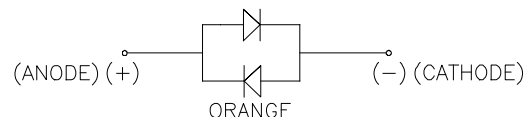
PART NUMBER RJE36-188-1XWX-X1

ADDITIONAL LED COLOR CODE

↑ DENOTES ADDITIONAL LED OPTIONS TO BE USED

CODE	LED 2 (LEFT)	LED 1 (RIGHT)	CODE	LED 2 (LEFT)	LED 1 (RIGHT)	CODE	LED 2 (LEFT)	LED 1 (RIGHT)
0	DO NOT USE		5	BLOCKED	YELLOW	A	YELLOW	YELLOW
1	RED	BLOCKED	6	RED	BiC RD/GR	B	YELLOW	GREEN
2	BiC GR/OR	YELLOW	7	BLOCKED	BiC RD/GR	C	GREEN	YELLOW
3	YELLOW	RED	8	BiC RD/GR	BLOCKED	D	GREEN	GREEN
4	BLOCKED	RED	9	BiC GR/YE	BLOCKED	M	RED	YELLOW
						N	GREEN	BiC GR/OR
						E	GREEN	ORANGE
						F	ORANGE	GREEN

TYPICAL FOR BI-COLOR
GREEN



(GREEN/ORANGE, GREEN/YELLOW
AND GREEN/RED)

REVISIONS			
REV	DESCRIPTION, ECN, EAR NO.	DATE	APP'D
A	PROPOSAL	MAY10/18	L.CHAN
B	PROPOSAL	AUG23/18	L.CHAN
C	ADD LOW CURRENT NOTES	DEC05/18	L.CHAN

LED SPECIFICATIONS:

FORWARD VOLTAGE: 2.1 VOLTS TYP.

REVERSE VOLTAGE: 5.0 VOLTS MIN.

LUMINOUS INTENSITY: 0.5 mCd MIN.

(AT If=2mA)

STORAGE TEMPERATURE: -40° TO 85° C

LEAD SOLDERING TEMPERATURE: 260° C

(5 SEC, 1/16" FROM CASE)

PLATING ON TAILS: TIN OR TIN/COPPER
ALLOY OVER SILVER

PRIMARY COLOR FOR BI-COLOR

LEDS IN STANDARD ANODE/

CATHODE CONFIGURATION IS:

RED-GREEN= RED

RED-YELLOW= RED

GREEN-YELLOW= GREEN

GREEN-ORANGE= GREEN

LEGEND

BiC=BI-COLOR LED

LOWC=LOW CURRENT LED

YE=YELLOW

GR=GREEN

RD=RED

OR=ORANGE

NOTE:

THE TWO DIGITS PRECEDING THE
ADDITIONAL LED CODE MUST BE
USED IN THE PART NUMBER, WHEN
ORDERING ANY OF THE ADDITIONAL
LED OPTIONS.

UNLESS SPECIFIED OTHERWISE		DRAWN HANSON.C	DATE MAY10/18	Amphenol Canada Corp.	
PRIMARY UNITS MILLIMETER		CHECKED Lawrence.C	DATE MAY10/18		
SECONDARY INCH		M.E. APP'D		Commercial Products	
REFERENCE IN PARENTHESES		Q.A. APP'D		LED OPTIONS FOR RJE36	
GENERAL TOLERANCES		DWG APPR.		DWG. NO. P-RJE36-LEDs	
1 DECIMAL PLACE ±0.45		ENG. REL. NO.		REV C	
2 DECIMAL PLACES ±0.30		REF.		CODE ID NO. 03554 DWG SIZE: C SCALE: N/A SHEET 1 OF 1	
3 DECIMAL PLACES ±0.15		THIRD ANGLE PROJECTION			
ANGULAR DEGREES ±1.0°		DO NOT SCALE DRAWING			