



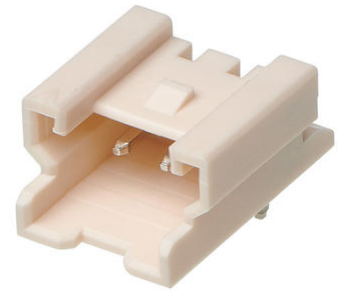
**Part Number :** [353630760](#)

**Product Description :** 2.00mm Pitch Sherlock Wire-to-Board Header, Right-Angle, with Positive Lock, 7 Circuits

**Series Number :** 35363

**Status :** Not Recommended For New Design

**Product Category :** PCB Headers and Receptacles



---

## Documents and Resources

### Drawings

[353630760\\_sd.pdf](#)

[353630760\\_stp.zip](#)

[Symbol and Footprint \(Multi-Format\)](#)


### Specifications

[PS-35507-001-001.pdf](#)

---

## Product Environment Compliance

### Compliance

GADSL/IMDS	Compliant with Exemption 44
China RoHS	 per SJ/T 11365-2006
EU ELV	Not Relevant
Low-Halogen Status	Low-Halogen per IEC 61249-2-21
REACH SVHC	Not Contained per D(2025)4165-DC (25 June 2025)
EU RoHS	Compliant per EU 2015/863

### Compliance Statements

- EU RoHS
- REACH SVHC
- Low-Halogen

### Industry Documents

- IPC 1752A Class C
- IPC 1752A Class D

- Molex Product Compliance Declaration
- IEC-62474
- chemSHERPA (xml)

Substances of Interest

- PFAS

EU RoHS Certificate of Compliance

Additional Product Compliance Information

---

## Part Details

### General

Status	Not Recommended For New Design
Category	PCB Headers and Receptacles
Series	35363
Description	2.00mm Pitch Sherlock Wire-to-Board Header, Right-Angle, with Positive Lock, 7 Circuits
Application	Signal, Wire-to-Board
Component Type	PCB Header
Product Name	Sherlock
UPC	822348260478

### Agency

CSA	LR19980
UL	E29179

### Electrical

Current - Maximum per Contact	2.0A
Voltage - Maximum	125V

### Physical

Breakaway	No
Circuits (Loaded)	7
Circuits (maximum)	7
Color - Resin	Natural
Durability (mating cycles max)	30

First Mate / Last Break	No
Glow-Wire Capable	No
Guide to Mating Part	No
Keying to Mating Part	None
Lock to Mating Part	Yes
Material - Plating Mating	Tin
Material - Plating Termination	Tin
Material - Resin	Nylon
Net Weight	0.492/g
Number of Rows	1
Orientation	Right Angle
Packaging Type	Bag
PCB Locator	No
PCB Retention	Yes
PCB Thickness - Recommended	1.60mm
PC Tail Length	3.20mm
Pitch - Mating Interface	2.00mm
Polarized to Mating Part	Yes
Polarized to PCB	No
Shrouded	Partial
Stackable	No
Temperature Range - Operating	-40° to +105°C
Termination Interface Style	Through Hole

---

## Mates With / Use With

### Mates with Part(s)

Description	Part Number
Sherlock Receptacle Housings	<u><a href="#">35507</a></u>

---

This document was generated on Dec 29, 2025