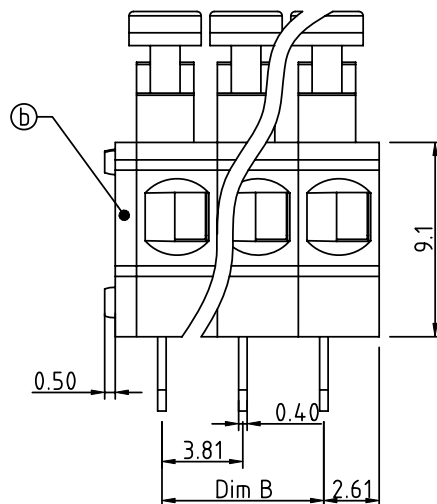
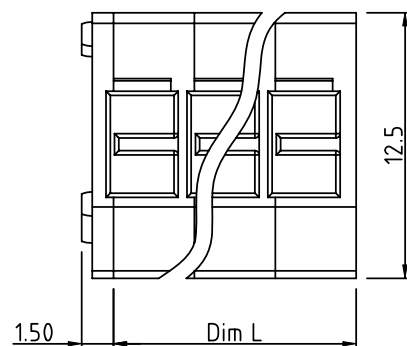


PRODUCT NUMBER	PITCH
HBxx31x000J0G	3.81 mm

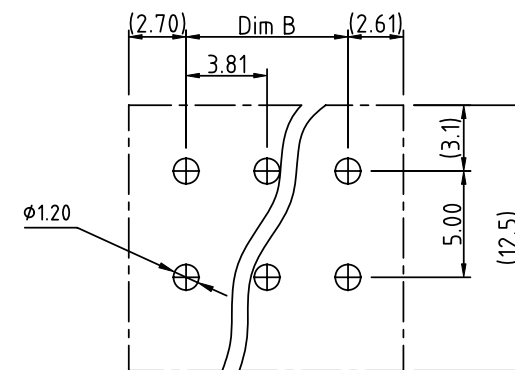
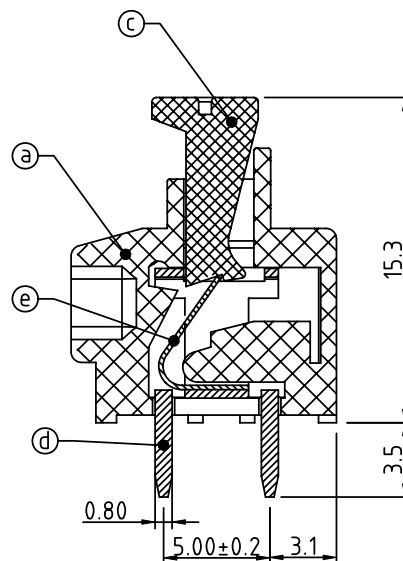


N=Number of poles  
Dim L=N×3.81  
Dim B=(N-1)×3.81

Poles	Dim L	Dim B
2-6p	±0.20	±0.15
7-12p	±0.30	±0.25
13-18p	±0.40	±0.35
19-24p	±0.45	±0.40

PART NO.: HB xx 31 x 0 00J0 G

End stackable	No. of poles	Color	RoHS compliant
0	2	Black (RAL9005)	(lead<4%)
02	2 poles	Red (RAL3001/D)	In copper Alloy
03	3 poles	Orange(RAL2011/P)	
...	...	4 Yellow(RAL1018/A)	
...	...	5 Green(RAL6018/T)	
24	24 poles	6 Blue (RAL5015/A)	
		8 Grey(RAL7004/P)	
		9 White(RAL1102)	
		C Multiple colors	



RECOMMENDED P.C.B LAYOUT  
TOP VIEW

#### Material:

- Item①Insulating body:Thermoplastic ( UL94V-0 )
- Item②Insulating cover:Thermoplastic ( UL94V-0 )
- Item③Insulating lever:Thermoplastic ( UL94V-0 ) Natural color
- Item④Solder pin:Brass,Tin plated
- Item⑤Spring clamp:Stainless steel

#### Electrical cULus/VDE

- Voltage rating: 300VAC/250VAC
- Current rating: 10A/9A
- Wire range: 0.5-0.75mm<sup>2</sup>
- Solid wire(AWG): 16-20
- Stranded wire(AWG): 16-20
- Wire strip length: 9-10mm
- Withstanding Voltage: 1.6KV/2KV
- Operating temperature: -40°C to +115°C
- Soldering temperature: 260°C±5°C/5 Sec
- Safety Approval: cULus VDE

mat'l. code				surface	tolerance	projection	product family		
ASME Y14.5				ASME Y14.5	ASME Y14.5		TERMINAL BLOCK		
ltr	ecn	no	dr	date	tolerances unless otherwise specified		title		
					angles	X.±0.5	TERMINAL BLOCK		
					flat	X.X±0.3	SPRING CLAMP,180D WIRE INLET		
					X°±1°	X.XX±0.1	scale		
					dr	EVIN ZHONG 052614	dwg no		
					enrg	EVIN ZHONG 052614	sheet 1 of 1		
					chr	HANKE FENG 052614	HBxx31x000J0G		
					appd	SHI JUN 052614	type		
sheet index				revision	A		CUSTOMER Drawing		
				sheet	1				