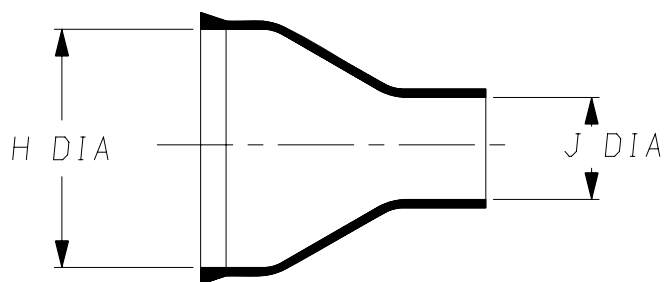
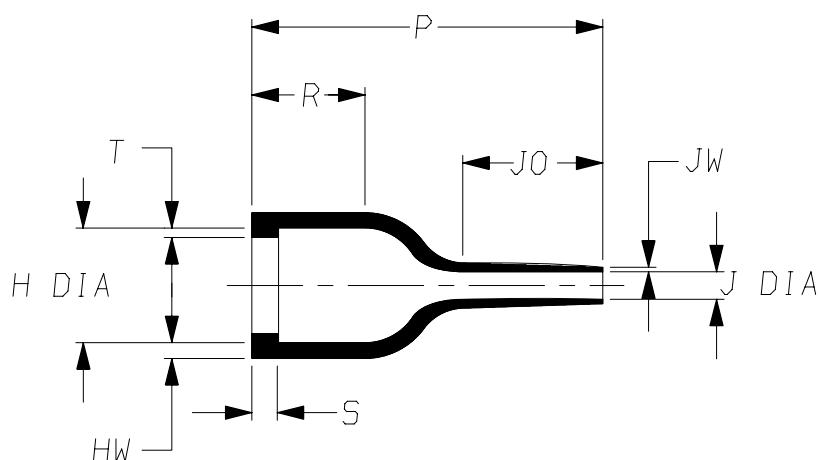


a) Part as supplied.

202K232-*01



b) Part after unrestricted recovery.



DIMENSIONS in millimetres
(in inches, for reference)

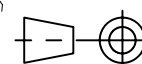
Part No.	H		J		P	R	S	T	J0	HW	JW
	Min a	Max b	Min a	Max b							
202K232-*01	25 {0.98}	13.8 {0.54}	8.0 {0.31}	3.3 {0.13}	40 {1.57}	13 {0.51}	3.0 {0.12}	1.0 {0.04}	16 {0.63}	1.8 {0.07}	0.5 {0.02}
					#	#					

This is a trimmed variant
Modified dimensions are shown thus:- #

Copyright (!)

The copyright in this drawing is the property of Tyco Electronics UK Ltd. The drawing is issued on the condition that it is not copied, reproduced or disclosed to a third party, either in whole or in part without the prior written consent of Tyco Electronics UK Ltd.

Drawn A.LILLEY. Checked Issue 3 Date October 2006 Conforms to ISO Recommendations
3rd Angle Projection
Not to Scale
Approval Design MKTG. Q.A.



Raychem		Specification Control Drawing	Part Number 202K232-* -01 Issue 3
Iss.	Date	E.C.R. No.	Details of Change
2	May 1990	5629	Ja Min was 7.0
3	October 2006	CR06-DM-104	Material description name changed

Ordering Information

202K232-* -01/**		
	↑	Adhesive Slash Number (if required see compatibility chart)
	↑	Modification number
	↑	Material Dash Number (see compatibility chart)
	↑	Base Part Number

COMPATIBILITY CHART

Material Dash Number	Material Description	SPEC Number	Coating Slash Number
-3	POLYOLEFIN, SEMI-RIGID	RT-301, RK-6703	/42, /86, /180
-4	POLYOLEFIN, FLEXIBLE	RT-1304 RT-1050	/42, /86, /180
-6	SILICON	RT-602, RK-6706	N/A
-12	FLUOROELASTOMER, FLEXIBLE	RT-1312, RW-2071	/225
-25	ELASTOMER, FLUID RESISTANT	RT-1325, RK-6713	/42, /86, /225
-130	POLYOLEFIN, COMMERCIAL FLEXIBLE	RW-2008	/42

NOTES

- ① As supplied dimensions are for uncoated parts, when coating is added entry diameters will reduce by 1.5mm Max.

Tyco Electronics UK Ltd. Faraday Road, Swindon, Wiltshire, SN3 5HH England Telephone: (01793) 528171 Fax: 572516	Tyco Electronics Corporation 300, Constitution Drive, Menlo Park, CA 94025 USA Telephone (650) 361-3860 Fax: (650) 361-5579
Cage Code K1010	Cage Code 06090