



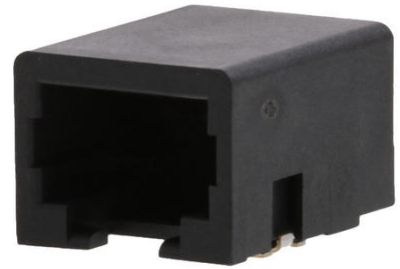
Part Number : [441440005](#)

Product Description : Modular Jack, Right-Angle, Low Profile, Surface Mount, 6/6, 1.27µm Gold Plating

Series Number : 44144

Status : Active

Product Category : Modular Jacks and Plugs



Documents and Resources

Drawings

[441440005_sd.pdf](#)

[PK-70873-700+-001.pdf](#)

3D Models and Design Files

[STEP AP242](#)

[SOLIDWORKS](#)

[Creo](#)


[Symbol and Footprint \(Multi-Format\)](#)

Specifications

[PS-43743-0001-001.pdf](#)

Product Environment Compliance

Compliance

| | |
|--------------------|---|
| GADSL/IMDS | Compliant with Exemption 44; 34; 33 |
| China RoHS |  per SJ/T 11365-2006 |
| EU ELV | Not Relevant |
| Low-Halogen Status | Not Low-Halogen per IEC 61249-2-21 |
| REACH SVHC | Not Contained per D(2025)7771-DC (04 Feb 2026) |
| EU RoHS | Compliant per EU 2015/863 |

[Compliance Statements](#)

- EU RoHS
- REACH SVHC
- Low-Halogen

Industry Documents

- IPC 1752A Class C
- IPC 1752A Class D
- Molex Product Compliance Declaration
- IEC-62474
- chemSHERPA (xml)

Substances of Interest

- PFAS

EU RoHS Certificate of Compliance

Additional Product Compliance Information

Part Details

General

| | |
|---------------------------|---|
| Status | Active |
| Category | Modular Jacks and Plugs |
| Series | 44144 |
| Description | Modular Jack, Right-Angle, Low Profile, Surface Mount, 6/6, 1.27µm Gold Plating |
| Comments | Flush Solder Tabs |
| Component Type | PCB Jack |
| Magnetic | No |
| Performance Category | 3 |
| Power over Ethernet (PoE) | N/A |
| Product Name | Modular Jack 6/6 |
| UPC | 800753923010 |

Agency

| | |
|-----|---------|
| CSA | LR19980 |
| UL | E107635 |

Electrical

| | |
|-------------------------------|------|
| Current - Maximum per Contact | 1.5A |
| Shielded | No |

| | |
|-------------------|---------------|
| Voltage - Maximum | 150V AC (RMS) |
|-------------------|---------------|

Physical

| | |
|--------------------------------|--------------------------------|
| Color - Resin | Black |
| Durability (mating cycles max) | 500 |
| Flammability | 94V-0 |
| Inverted / Top Latch | No |
| Jack Height | 11.73mm |
| Lightpipes/LEDs | None |
| Material - Metal | Phosphor Bronze |
| Material - Plating Mating | Gold |
| Material - Plating Termination | Tin |
| Material - Resin | High Temperature Thermoplastic |
| Net Weight | 2.340/g |
| Orientation | Right Angle (Side Entry) |
| Packaging Type | Embossed Tape on Reel |
| PCB Retention | Yes |
| Pitch - Mating Interface | 1.02mm |
| Pitch - Termination Interface | 1.27mm |
| Plating min - Mating | 1.270µm |
| Plating min - Termination | 2.540µm |
| Port Configuration | 1x1 |
| Positions / Loaded Contacts | 6/6 |
| Temperature Range - Operating | -40° to +70°C |
| Termination Interface Style | Surface Mount |
| Wire/Cable Type | N/A |

Solder Process Data

| | |
|------------------------------|--------|
| Max-Duration | 30 |
| Lead-Free Process Capability | REFLOW |
| Max-Cycle | 1 |
| Max-Temp | 235 |

Mates With / Use With

Mates with Part(s)

| Description | Part Number |
|-------------|--------------|
| Mates With | FCC 68 Plugs |

This document was generated on May 27, 2026