

901 - 20 RT 1 - 19 - 0 PN * T ***

CONNECTOR TYPE
As per ST 538 AGB/T

SHELL TYPE
20 : Plug
21 : Receptacle with nut and anti rotation teeth
92 : Receptacle with 4 screws
24 : Short receptacle with 4 screws fixing without need for backfitting

ARRANGEMENTS
(See pages 8 and 9)

SHELL SIZE
7-12-19-27-37-48-61-121

CONTACT TYPE
P : Male contact
S : Female contact

FITTING BACK TYPE
Back nut : R
Straight accessory (with adaptor for individual cable) : RT
Elbow accessory (with adaptor for individual cable) : CT
Elbow accessory (for multipurpose cable) : CS
Short elbow accessory (with adaptor for individual cable) : CC
Potting cup for thermo-shrink sleeve : ET
Adaptor for straight or elbowed light weight cable clamp : RA
Adaptor for heavy duty cable clamp : RD
Accessories for special cables, please consult us

KEYING SYSTEM
N : Normal
W-X-Y-Z : Others
(See page 8)

INDEX FOR CONTACTS
(See pages 24 to 27 size 8 and coax)

THERMO-SHRINK SLEEVE
Supplied with accessory (for RT - CT - CS - CC and ET indicate index T)

SPECIAL MODIFICATIONS
090 : Connector supplied without contacts, order contacts separately, see pages 24 to 27)

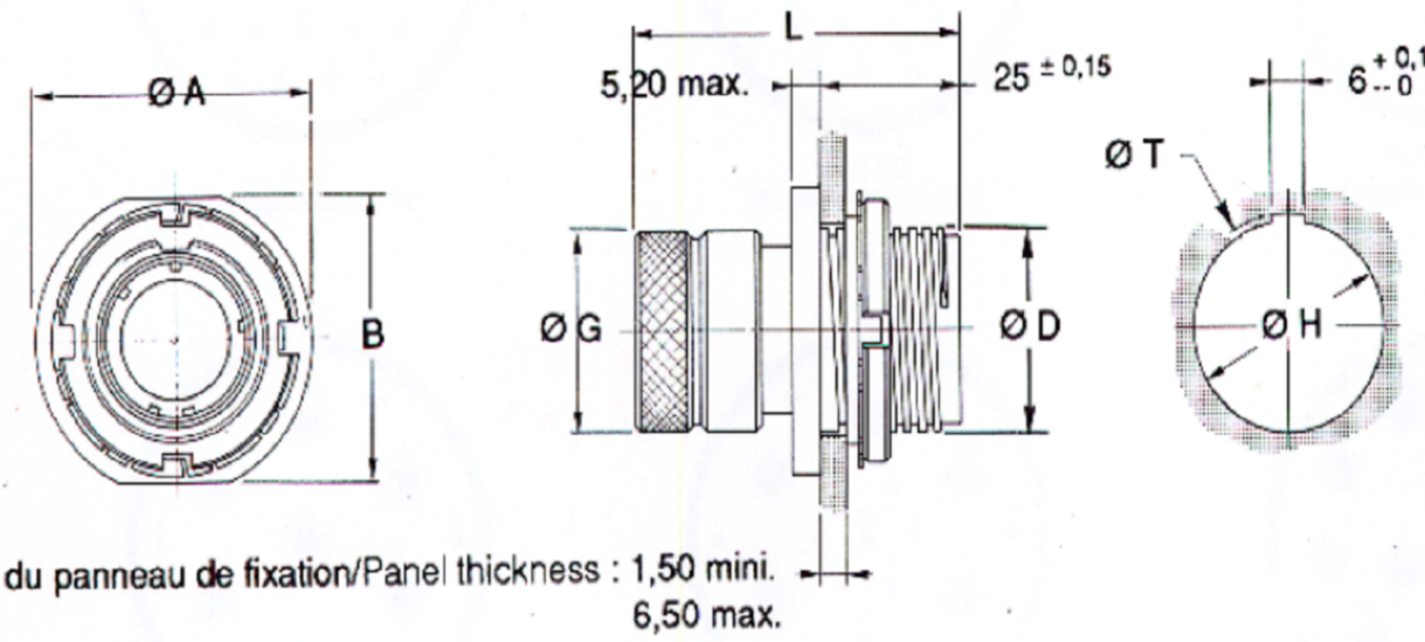
ACCESSORY INDEX AS PER Ø CABLE
(only for accessories RT - CT and CC)

Index	SHELL SIZES							
	7	12	19	27	37	48	61	121
1	9	12,5	14,5	17	18,5	20,5	22	22
	to	to	to	to	to	to	to	to
2	12,5	14,5	16,5	19	20,5	25	24	24
	to	to	to	to	to	to	to	to
3	15	19	20	23	25	31	31	31
	to	to	to	to	to	to	to	to
	16,5	21	22	28	31	33,5	38,5	38,5

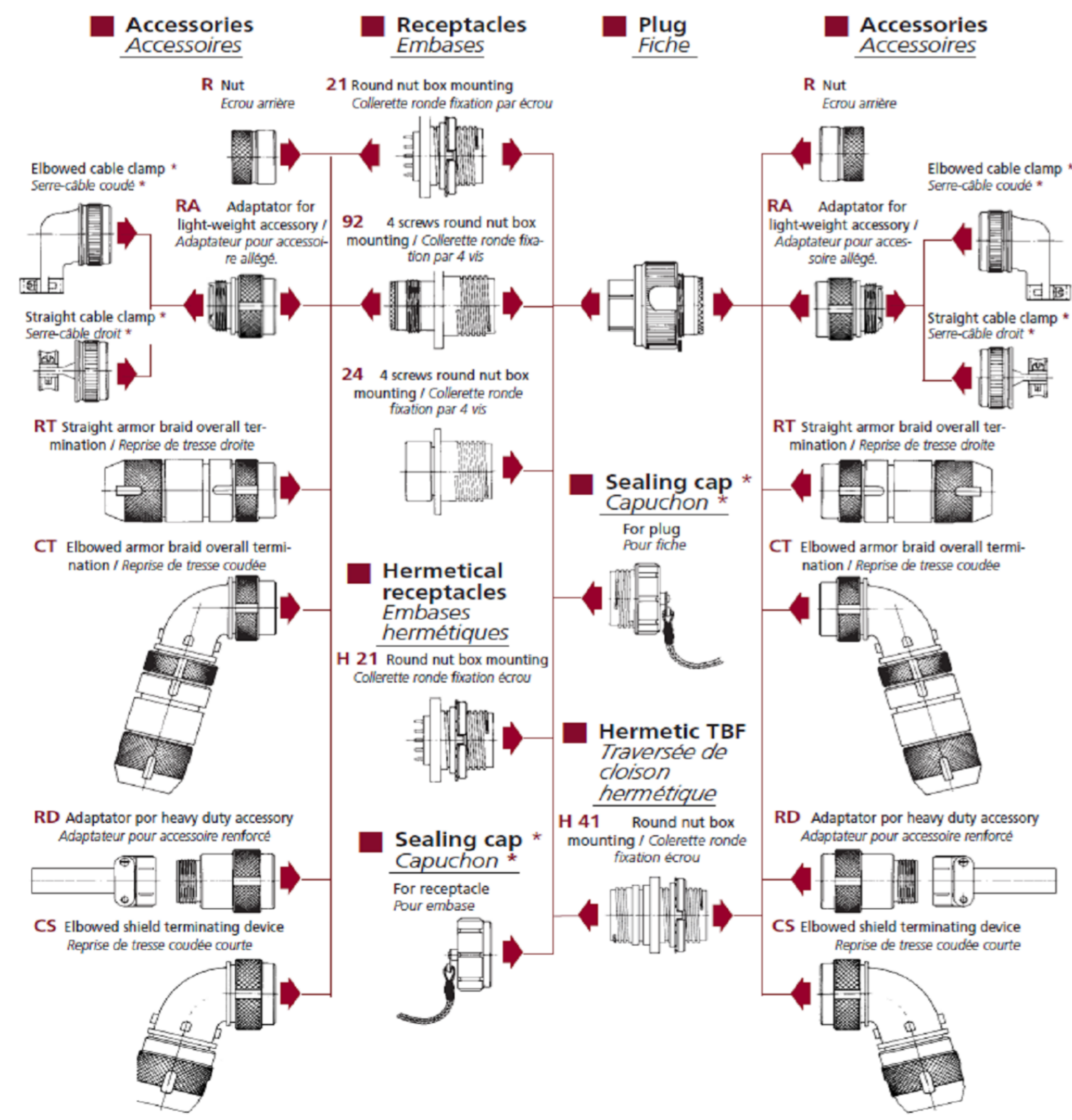
FIXATION PAR ECROU AVEC ERGOT ANTIROTATION
SINGLE HOLE MOUNTING WITH NUT AND ANTI ROTATION TEETH

Type 21 R

PERÇAGE PANNEAU
PANEL HOLE DETAIL



ACCESSORIES



Taille Size	A max.	B max.	D max.	G max.	H +0,2 -0	L max.	T +0,1 -0
7	40,00	37,40	24,90	24,50	25,00	57,10	27,00
12	44,00	40,20	28,00	27,10	28,00	57,10	30,00
19	48,00	44,20	31,90	30,80	32,00	57,10	34,00
27	53,00	47,60	35,90	35,55	36,00	57,35	38,00
37	57,00	51,00	38,90	38,70	39,00	57,35	41,00
48	62,20	57,20	42,90	43,90	43,00	57,35	45,00
61	66,00	60,00	45,90	45,90	46,00	57,35	48,00
121	86,00	75,00	56,90	56,90	57,00	57,35	59,00

CHARACTERISTIQUES

- Shell material : Aluminium alloy, coupling ring , Marine bronze UA9 Nfe
- Insert material : Thermosetting resin, silicone elastomer
- Contact : Crimp type, gold over nickel
- Temperature range : - 55° C to + 125° C
- Withstanding voltage : At sea level
Service 1 - 1500 V eff. 50 Hz
Service 2 - 1000 V eff. 50 Hz

DIMENSIONS: MM	TOLERANCES UNLESS OTHERWISE SPECIFIED: 0 PLC ± 1 PLC ±0.05 2 PLC ±0.05 3 PLC ±0.02 4 PLC ±	DWN LAKSHMI SUDHA R	MATERIAL -	HEAT TREAT -			
ANGLES ±	SURFACE TEXTURE	CHK RAKESH S	TE Connectivity				
		APVD VINCENT P					
		NAME 901 SERIES_Receptacle with nut and anti-rotation teeth	SCALE 2:1	SIZE A2	DRAWING NO 901_21X_++	SHEET 1 of 1	REV A