

**Description: 1005 Diplexer**
**PART NUMBER: DPX1005LKGBRWH60L**
**Features:**

- Compact size
- RoHS compliant

**Applications:**

- WLAN, 802.11a/b/g/n/ac/ax
- ISM Band

**ELECTRICAL SPECIFICATIONS**
**Low-Band**

Item	Frequency Range(MHz)	Min.	Typ.	Max.
Insertion Loss(dB)	1164~1610	-	0.22	0.40
	2400~2500	-	0.29	0.50
	2496~2690	-	0.34	0.65
Insertion Loss(dB) at -40~85°C	1164~1610	-	-	0.50
	2400~2500	-	-	0.60
	2496~2690	-	-	0.75
Return Loss (dB)	1164~2500	12.0	24.0	-
Attenuation (dB)	4800~6000	16.0	21.7	-
	5150~7125	18.0	25.1	-
	7200~7500	20.0	24.7	-

In the effort to improve our products, we reserve the right to make changes judged to be necessary.

CONFIDENTIAL AND PROPRIETARY INFORMATION

This document contains confidential and proprietary information of Pulse Electronics, Inc. (Pulse) and is protected by copyright, trade secret and other state and federal laws. Its receipt or possession does not convey any rights to reproduce, disclose its contents, or to manufacture, use or sell anything it may describe. Reproduction, disclosure or use without specific written authorization of Pulse is strictly forbidden.

For more information:

Pulse Worldwide Headquarters  
 15255 Innovation Drive #100  
 San Diego, CA 92128  
 USA  
 Tel: 1-858-674-8100

Pulse/Larsen Antennas  
 18110 SE 34<sup>th</sup> St Bldg 2 Suite 250  
 Vancouver, WA 98683  
 USA  
 Tel: 1-360-944-7551

Europe Headquarters  
 Pulse GmbH & Do, KG  
 Zeppelinstrasse 15  
 Herrenberg, Germany  
 Tel: 49 7032 7806 0

Pulse (Suzhou) Wireless Products Co, Inc.  
 99 Huo Ju Road(#29 Bldg, 4<sup>th</sup> Phase  
 Suzhou New District  
 Jiangsu Province, Suzhou 215009 PR China  
 Tel: 86 512 6807 9998



Description: 1005 Diplexer

PART NUMBER: DPX1005LKGBRWH60L

## ELECTRICAL SPECIFICATIONS

### High-Band

Item	Frequency Range(MHz)	Min.	Typ.	Max.
Insertion Loss (dB)	5150~5950	-	0.55	0.85
	5950~6245	-	0.49	0.85
	6245~7125	-	0.62	0.85
Insertion Loss (dB) at -40~85°C	5150~5950	-	-	0.95
	5950~6245	-	-	1.00
	6245~7125	-	-	1.00
Return Loss (dB)	5150~5950	10.0	19.1	-
	5950~6245	10.0	18.3	-
	6245~7125	10.0	17.2	-
Attenuation (dB)	500~2400	25.0	28.9	-
	2400~2500	32.0	37.6	-
	2500~2690	25.0	36.5	-
	10300~11900	12.0	21.5	-
	11900~12490	15.0	22.4	-
	12490~14250	14.0	19.7	-
	15510~21375	10.0	19.7	-

### Common

Item	Frequency Range(MHz)	Min.	Typ.	Max.
Return Loss (dB)	1164~2500	12.0	24.1	-
	5150~5950	10.0	18.7	-
	5950~6245	10.0	19.1	-
	6245~7125	10.0	19.1	-

### Isolation

Item	Frequency Range(MHz)	Min.	Typ.	Max.
Low to High (dB)	2400~2500	30.0	36.2	-
	5150~5950	18.0	25.5	-
	5950~6245	18.0	25.5	-
	6245~7125	18.0	25.5	-

Operating Temperature Range : -40~85°C

Power Capacity : 3W max.

In the effort to improve our products, we reserve the right to make changes judged to be necessary.

CONFIDENTIAL AND PROPRIETARY INFORMATION

This document contains confidential and proprietary information of Pulse Electronics, Inc. (Pulse) and is protected by copyright, trade secret and other state and federal laws. Its receipt or possession does not convey any rights to reproduce, disclose its contents, or to manufacture, use or sell anything it may describe. Reproduction, disclosure or use without specific written authorization of Pulse is strictly forbidden.

For more information:

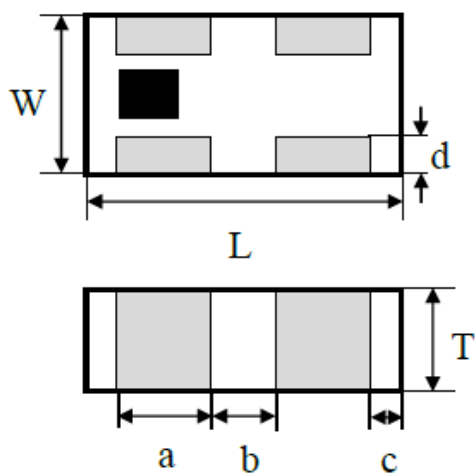


Pulse Worldwide Headquarters  
15255 Innovation Drive #100  
San Diego, CA 92128  
USA  
Tel: 1-858-674-8100

Pulse/Larsen Antennas  
18110 SE 34<sup>th</sup> St Bldg 2 Suite 250  
Vancouver, WA 98683  
USA  
Tel: 1-360-944-7551

Europe Headquarters  
Pulse GmbH & Do, KG  
Zeppelinstrasse 15  
Herrenberg, Germany  
Tel: 49 7032 7806 0

Pulse (Suzhou) Wireless Products Co, Inc.  
99 Huo Ju Road(#29 Bldg,4<sup>th</sup> Phase  
Suzhou New District  
Jiangsu Province, Suzhou 215009 PR China  
Tel: 86 512 6807 9998

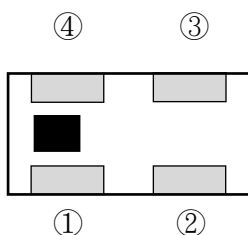
**Description: 1005 Diplexer**
**PART NUMBER: DPX1005LKGBRWH60L**
**MECHANICAL DIMENSION**
**Outline**
**Dimension**


L	W	T	a
1.00±0.10	0.50±0.10	0.40 max.	0.30±0.10
b	c	d	
0.20±0.10	0.10±0.10	0.12±0.07	

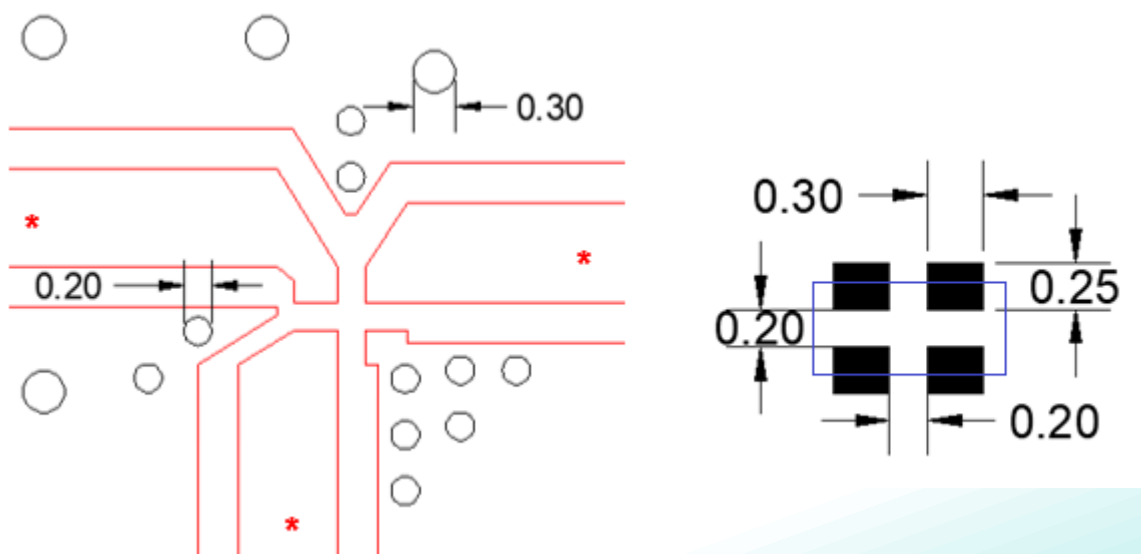
NOTE : Dimensions in mm.

**Termination**

Top View


**Terminal name**
**Function**

1	Common
2	GND
3	High band
4	Low band

**Reference design of EVB**


In the effort to improve our products, we reserve the right to make changes judged to be necessary.

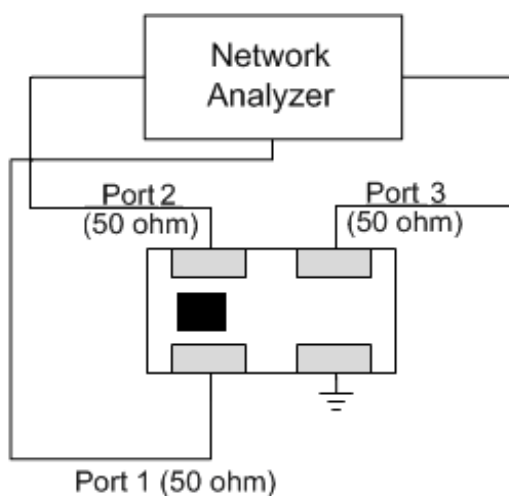
CONFIDENTIAL AND PROPRIETARY INFORMATION

This document contains confidential and proprietary information of Pulse Electronics, Inc. (Pulse) and is protected by copyright, trade secret and other state and federal laws. Its receipt or possession does not convey any rights to reproduce, disclose its contents, or to manufacture, use or sell anything it may describe. Reproduction, disclosure or use without specific written authorization of Pulse is strictly forbidden.

Description: 1005 Diplexer

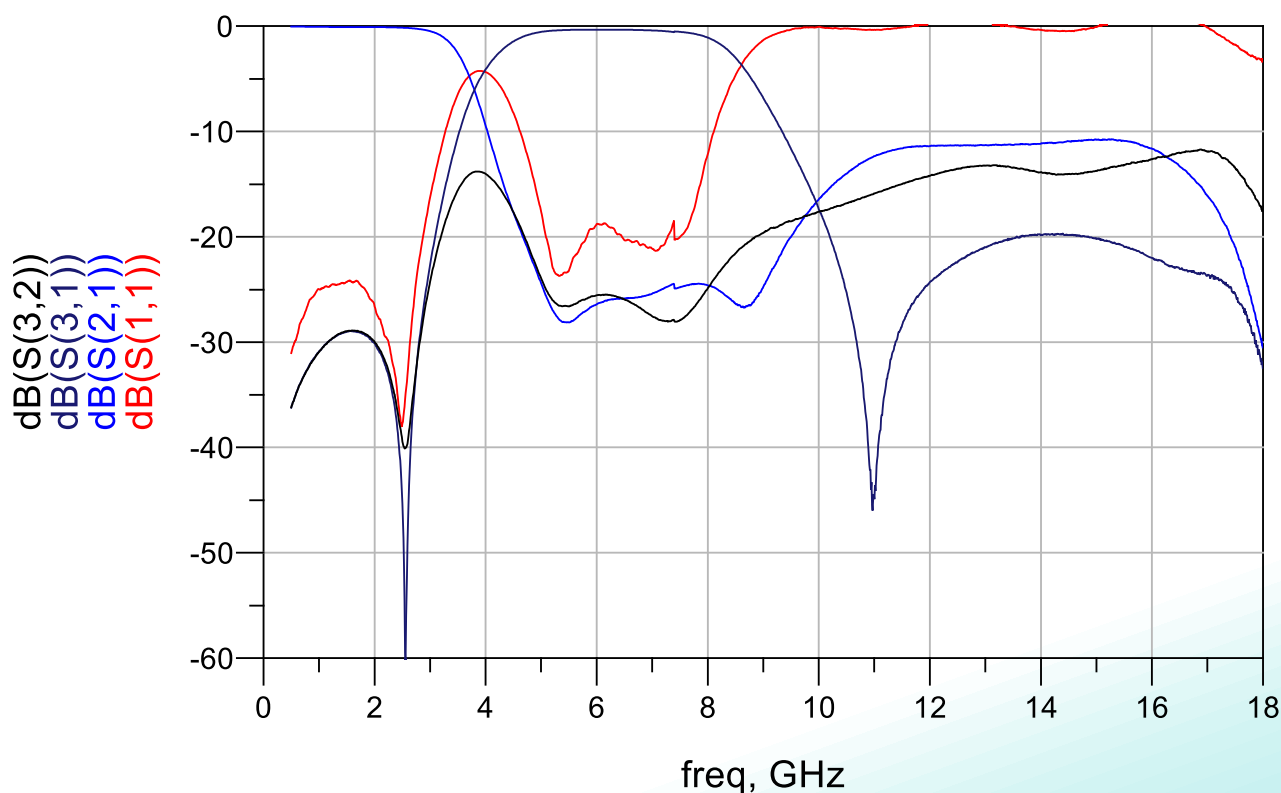
PART NUMBER: DPX1005LKGBRWH60L

## MEASURING DIAGRAM



Test Instrument :  
Agilent E5071C Network Analyzer or equivalent.

## ELECTRICAL PERFORMANCES



In the effort to improve our products, we reserve the right to make changes judged to be necessary.

CONFIDENTIAL AND PROPRIETARY INFORMATION

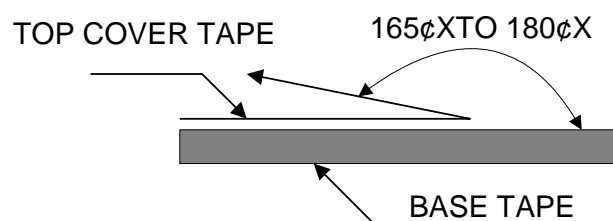
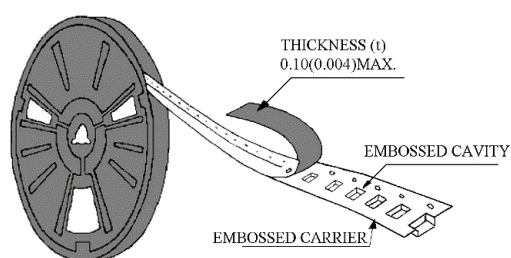
This document contains confidential and proprietary information of Pulse Electronics, Inc. (Pulse) and is protected by copyright, trade secret and other state and federal laws. Its receipt or possession does not convey any rights to reproduce, disclose its contents, or to manufacture, use or sell anything it may describe. Reproduction, disclosure or use without specific written authorization of Pulse is strictly forbidden.

Description: 1005 Diplexer

PART NUMBER: DPX1005LKGBRWH60L

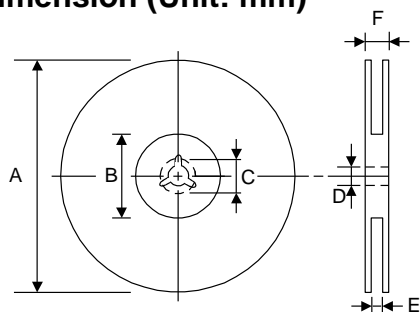
## PACKING SPECIFICATION

### Peel-off force



The force for peeling of cover tape is 10 grams in the arrow direction.

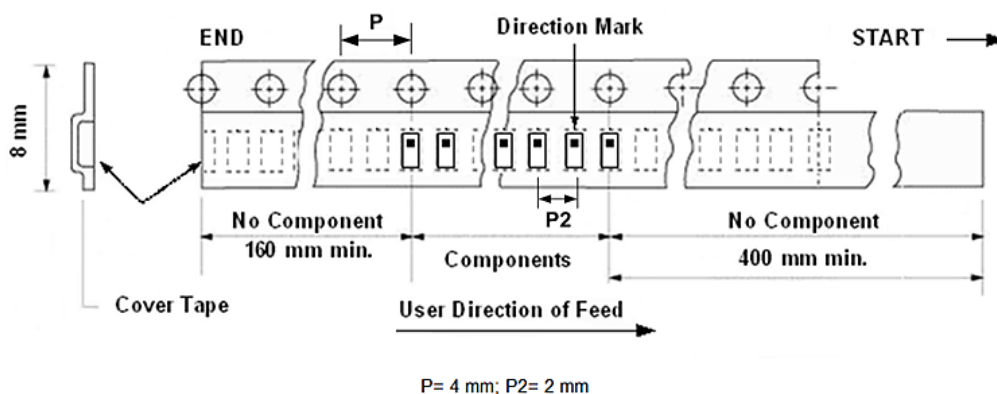
### Dimension (Unit: mm)



TYPE	A	B	C	D	E	F
8 mm	178±1	60+0.5 -0	-	13±0.2	9±0.5	12±0.5
12 mm	178±0.3	60±0.2	19.3±0.1	13.5±0.1	13.6±0.1	-

### Taping quantity

SERIES	5824 5724	5320 5220	4532	4516	3225	3216 2520	2012 1608	1005 0605
PCS/Reel	5000	3000	1000	2000	2500	3000	4000	10000



In the effort to improve our products, we reserve the right to make changes judged to be necessary.

CONFIDENTIAL AND PROPRIETARY INFORMATION

This document contains confidential and proprietary information of Pulse Electronics, Inc. (Pulse) and is protected by copyright, trade secret and other state and federal laws. Its receipt or possession does not convey any rights to reproduce, disclose its contents, or to manufacture, use or sell anything it may describe. Reproduction, disclosure or use without specific written authorization of Pulse is strictly forbidden.

**Description:** 1005 Diplexer**PART NUMBER:** DPX1005LKGBRWH60L**REVISION HISTORY**

Revision	Date	Description
Version 1	Dec. 30, 2021	- New issue.
Version 2	Aug. 11, 2021	- Tightened insertion loss.

In the effort to improve our products, we reserve the right to make changes judged to be necessary.

CONFIDENTIAL AND PROPRIETARY INFORMATION

This document contains confidential and proprietary information of Pulse Electronics, Inc. (Pulse) and is protected by copyright, trade secret and other state and federal laws. Its receipt or possession does not convey any rights to reproduce, disclose its contents, or to manufacture, use or sell anything it may describe. Reproduction, disclosure or use without specific written authorization of Pulse is strictly forbidden.