

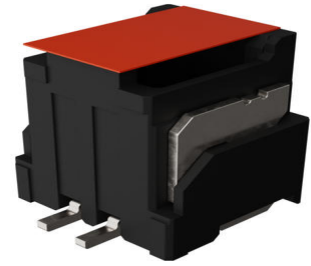
**Part Number :** [2240460027](#)

**Product Description :** Micro-One Wire-to-Board Header, Vertical, 2.00mm Pitch, Single Row, Glow-Wire Capable, Surface Mount, 2 Circuits, Gold Plating, Black, Potting Capability, with Cover Tape

**Series Number :** 224046

**Status :** Active

**Product Category :** PCB Headers and Receptacles



---

## Documents and Resources

### Drawings

[2240460027 sd.pdf](#)

[2240469200-SPK-200.pdf](#)

[STEP AP242](#)

[SOLIDWORKS](#)

[Creo](#)

### Specifications


[2059790000-AS-000.pdf](#)

[2059790000-PS-002.pdf](#)

---

## Product Environment Compliance

### Compliance

GADSL/IMDS	Not Relevant
China RoHS	 per SJ/T 11365-2006
EU ELV	Not Relevant
Low-Halogen Status	Low-Halogen per IEC 61249-2-21
REACH SVHC	Not Contained per D(2025)6375-DC (05 Nov 2025)
EU RoHS	Compliant per EU 2015/863

### Compliance Statements

- EU RoHS

- REACH SVHC
- Low-Halogen

#### Industry Documents

- IPC 1752A Class C
- IPC 1752A Class D
- Molex Product Compliance Declaration
- IEC-62474
- chemSHERPA (xml)

#### Substances of Interest

- PFAS

#### EU RoHS Certificate of Compliance

#### Additional Product Compliance Information

## Part Details

### General

Status	Active
Category	PCB Headers and Receptacles
Series	224046
Description	Micro-One Wire-to-Board Header, Vertical, 2.00mm Pitch, Single Row, Glow-Wire Capable, Surface Mount, 2 Circuits, Gold Plating, Black, Potting Capability, with Cover Tape
Application	Signal, Wire-to-Board
Component Type	PCB Header
Product Name	Micro-One
UPC	196823621482

### Agency

UL	E29179
----	--------

### Electrical

Current - Maximum per Contact	4.0A
Voltage - Maximum	250V AC (RMS)/DC

### Physical

Breakaway	No
Circuits (Loaded)	2
Circuits (maximum)	2
Color - Resin	Black
Durability (mating cycles max)	30
First Mate / Last Break	No
Glow-Wire Capable	Yes
Lock to Mating Part	Yes
Material - Metal	Brass
Material - Plating Mating	Gold
Material - Plating Termination	Matte Tin
Material - Resin	Liquid Crystal Polymer
Net Weight	666.240/mg
Number of Rows	1
Orientation	Vertical
Packaging Type	Embossed Tape on Reel
PCB Retention	Yes
Pitch - Mating Interface	2.00mm
Plating min - Mating	0.100µm
Plating min - Termination	1.000µm
Polarized to PCB	Yes
Shrouded	Fully
Temperature Range - Operating	-40° to +105°C
Termination Interface Style	Surface Mount

---

## Mates With / Use With

### Mates with Part(s)

Description	Part Number
Micro-One Wire-to-Board Receptacle Housings	<u>205979</u>
Micro-One Single Row Receptacle Housings	<u>212724</u>

---

This document was generated on Mar 01, 2026