



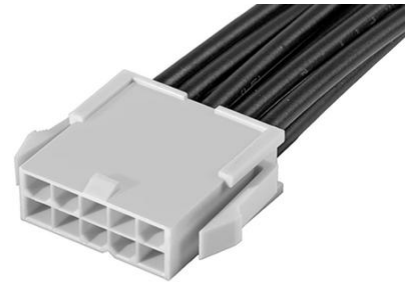
**Part Number :** [2153271102](#)

**Product Description :** Mini-Fit Jr. Male-to-Mini-Fit Jr. Male Off-the-Shelf (OTS) Cable Assembly, Dual Row, 300.00mm Length, Tin (Sn) Plating, 10 Circuits, Black

**Series Number :** 215327

**Status :** Active

**Product Category :** Power and Signal Cable Assemblies



---

## Documents and Resources

### Drawings

[2153271102 sd.pdf](#)

### 3D Models and Design Files

[STEP AP242](#)


[SOLIDWORKS](#)

[Creo](#)

---

## Product Environment Compliance

### Compliance

GADSL/IMDS	Not Relevant
China RoHS	 per SJ/T 11365-2006
EU ELV	Not Relevant
Low-Halogen Status	Not Low-Halogen per IEC 61249-2-21
REACH SVHC	Not Contained per D(2025)7771-DC (04 Feb 2026)
EU RoHS	Compliant per EU 2015/863

### [Compliance Statements](#)

- EU RoHS
- REACH SVHC
- Low-Halogen

### [Industry Documents](#)

- IPC 1752A Class C
- IPC 1752A Class D
- Molex Product Compliance Declaration
- IEC-62474
- chemSHERPA (xml)

#### Substances of Interest

- PFAS

#### EU RoHS Certificate of Compliance

#### Additional Product Compliance Information

---

## Part Details

### General

Status	Active
Category	Power and Signal Cable Assemblies
Series	215327
Description	Mini-Fit Jr. Male-to-Mini-Fit Jr. Male Off-the-Shelf (OTS) Cable Assembly, Dual Row, 300.00mm Length, Tin (Sn) Plating, 10 Circuits, Black
Application	Power, Wire-to-Wire
Assembly Configuration	Dual Ended Connectors
Connector to Connector	Mini-Fit Jr. Both Ends
Product Name	Mini-Fit Jr.
Type	Discrete Wire Assembly
UPC	193264590377

### Electrical

Current - Maximum per Contact	9.0A
Voltage - Maximum	600V

### Physical

Cable Length	300.00mm
Circuits (Loaded)	10
Circuits (maximum)	10
Color - Resin	Black

Gender	Male-Male
Lock to Mating Part	Yes
Material - Metal	Brass
Material - Plating Mating	Tin
Material - Plating Termination	Tin
Material - Resin	Nylon
Net Weight	76.922/g
Number of Rows	2
Overmolded	No
Packaging Type	Bag
Pitch - Mating Interface	4.20mm
Plating min - Mating	2.540µm
Plating min - Termination	2.540µm
Single Ended	No
Termination Interface Style	Crimp or Compression
Wire/Cable Type	UL 1015
Wire Size (AWG)	16

---

## Mates With / Use With

### Mates with Part(s)

Description	Part Number
Mini-Fit Jr. Receptacle Housings	<u>5557</u>
Mini-Fit TPA2-to-Mini-Fit TPA2 Off-the-Shelf (OTS) Cable Assemblies	<u>45135</u>
Mini-Fit Jr.-to-Mini-Fit Jr. Off-the-Shelf (OTS) Overmolded Cable Assemblies	<u>245135</u>

---

This document was generated on Apr 11, 2026