

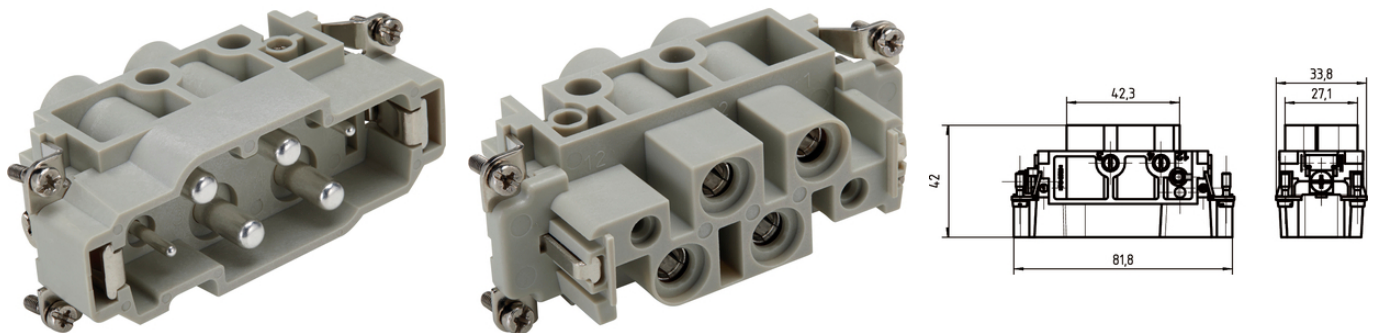
EPIC® K 4/2

Combination insert Power and Control

The combined insert is suitable for power and control and can be used, for example, in the area of recoverable energy and control systems.

Info

Combination insert Power and Control



Supplementary automation components from Lapp



Mechanical and plant engineering



Wind Energy



Temperature-resistant

Benefits

Power and control in one connector insert
Best in combination with ÖLFLEX® SERVO

Application range

Mechanical engineering
Control engineering
Renewable energy

Technical Data

Classification ETIM 5:

ETIM 5.0 Class-ID: EC000438

ETIM 5.0 Class-Description: Contact insert for industrial connectors

Classification ETIM 6:

ETIM 6.0 Class-ID: EC000438

Last Update (16.05.2021)

©2021 Lapp Group - Technical changes reserved

Product Management www.lappkabel.de

You can find the current technical data in the corresponding data sheet.

PN 0456 / 02_03.16

EPIC® K 4/2

| | |
|--------------------------------|---|
| | ETIM 6.0 Class-Description: Contact insert for industrial connectors |
| Rated voltage (V): | 830 V Power 400 V Control |
| Rated impulse voltage: | 8 kV |
| Rated current (A): | 80 A Power 16 A Control |
| Pollution degree: | 3 |
| Flammability: | UL94 V-0 |
| Contact resistance: | < 5 mOhm |
| Number of contacts: | 4 + 2 + PE |
| Termination methods: | Screw termination: 1.5 - 16.0 mm ² (power contact) Screw termination: 0.5 - 2.5 mm ² (control contact) |
| Stripping length (mm): | 16 mm (Power) 6 mm (Control) |
| Material: | PC, polycarbonate |
| Cycle of mechanical operation: | 500 |
| Certifications: | UL-tested: UL File Number: E75770 |
| Temperature range: | -40°C to +125°C |

Note

PE connection with a 16mm² wire only with the recommended ring lug 44424029

The inserts must be used with the appropriate housings

Photographs and graphics are not to scale and do not represent detailed images of the respective products.

Prices are net prices without VAT and surcharges. Sale to business customers only.

To connect stranded conductors, use a end sleeve.

EPIC® K 4/2

| Article number | Article description | Contact type | Number of operating contacts | Pieces / PU |
|-------------------------------|---------------------|--------------|------------------------------|-------------|
| EPIC® K 4/2 screw termination | | | | |
| 44424043 | EPIC® K 4/2 SS | male | 4 + 2 + PE | 10 |
| 44424044 | EPIC® K 4/2 BS | female | 4 + 2 + PE | 10 |

Last Update (16.05.2021)

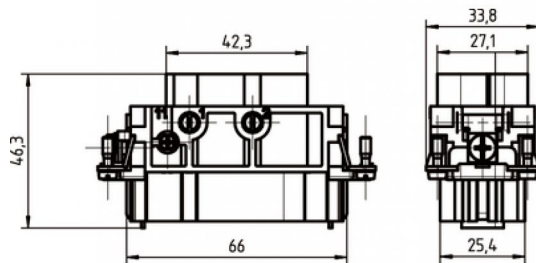
©2021 Lapp Group - Technical changes reserved

Product Management www.lappkabel.de

You can find the current technical data in the corresponding data sheet.

PN 0456 / 02_03.16

EPIC® K 4/2



Last Update (16.05.2021)

©2021 Lapp Group - Technical changes reserved

Product Management www.lappkabel.de

You can find the current technical data in the corresponding data sheet.

PN 0456 / 02_03.16