



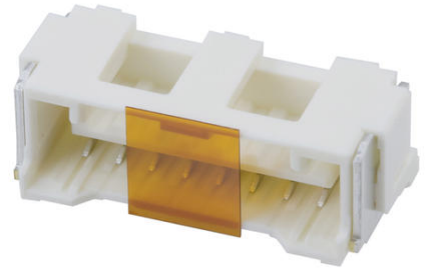
Part Number : [5025840860](#)

Product Description : 1.50mm Pitch, CLIK-Mate PCB Receptacle, Single Row, Surface Mount, Vertical, Tin Plating, Positive Lock, with Pick-and-Place Polyimide Tape, 8 Circuits, Beige

Series Number : 502584

Status : Active

Product Category : PCB Headers and Receptacles



Documents and Resources

Drawings

[5025840860 sd.pdf](#)

[5025840860 stp.zip](#)

[Symbol and Footprint \(Multi-Format\)](#)

[5025840860.dxf](#)

Specifications

[AS-502578-001-001.pdf](#)


[SPK-502584-001-001.pdf](#)

[5025780000-PS-000.pdf](#)

[5025781000-PS-000.pdf](#)

Product Environment Compliance

Compliance

| | |
|--------------------|---|
| GADSL/IMDS | Compliant with Exemption 44; 34; 33 |
| China RoHS |  per SJ/T 11365-2006 |
| EU ELV | Not Relevant |
| Low-Halogen Status | Not Low-Halogen per IEC 61249-2-21 |
| REACH SVHC | Not Contained per D(2025)7771-DC (04 Feb 2026) |
| EU RoHS | Compliant per EU 2015/863 |

Compliance Statements

- EU RoHS
- REACH SVHC
- Low-Halogen

Industry Documents

- IPC 1752A Class C
- IPC 1752A Class D
- Molex Product Compliance Declaration
- IEC-62474
- chemSHERPA (xml)

Substances of Interest

- PFAS

EU RoHS Certificate of Compliance

Additional Product Compliance Information

Part Details

General

| | |
|----------------|--|
| Status | Active |
| Category | PCB Headers and Receptacles |
| Series | 502584 |
| Description | 1.50mm Pitch, CLIK-Mate PCB Receptacle, Single Row, Surface Mount, Vertical, Tin Plating, Positive Lock, with Pick-and-Place Polyimide Tape, 8 Circuits, Beige |
| Application | Wire-to-Board |
| Component Type | PCB Receptacle |
| Product Name | CLIK-Mate |
| UPC | 800756720753 |

Agency

| | |
|----|--------|
| UL | E29179 |
|----|--------|

Electrical

| | |
|-------------------------------|------|
| Current - Maximum per Contact | 2.0A |
| Voltage - Maximum | 100V |

Physical

| | |
|--------------------------------|-----------------------|
| Circuits (Loaded) | 8 |
| Circuits (maximum) | 8 |
| Color - Resin | Beige |
| Durability (mating cycles max) | 30 |
| First Mate / Last Break | No |
| Gender | Female |
| Glow-Wire Capable | No |
| Guide to Mating Part | No |
| Keying to Mating Part | No |
| Lock to Mating Part | Yes |
| Mated Height | 9.70mm |
| Material - Metal | Copper Alloy |
| Material - Plating Mating | Tin |
| Material - Plating Termination | Tin |
| Net Weight | 666.601/mg |
| Number of Rows | 1 |
| Orientation | Vertical |
| Packaging Type | Embossed Tape on Reel |
| PCB Locator | No |
| PCB Retention | Yes |
| Pitch - Mating Interface | 1.50mm |
| Pitch - Termination Interface | 1.50mm |
| Plating min - Mating | 1.000µm |
| Plating min - Termination | 1.000µm |
| Polarized to Mating Part | Yes |
| Polarized to PCB | No |
| Robotic Placement | Vacuum Pick-Up Tape |
| Stackable | No |
| Temperature Range - Operating | -40° to +105°C |
| Termination Interface Style | Surface Mount |

Mates With / Use With

Mates with Part(s)

| Description | Part Number |
|-------------|-------------|
|-------------|-------------|

| | |
|--|---------------|
| 1.50mm Pitch CLIK-Mate Single Row Plug Housings | <u>502578</u> |
| 1.50mm Pitch CLIK-Mate-to-CLIK-Mate Off-the-Shelf (OTS) Cable Assemblies | <u>15135</u> |

This document was generated on Jun 10, 2026