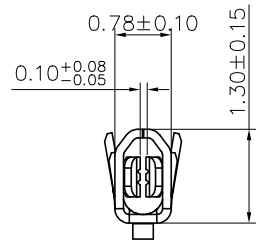
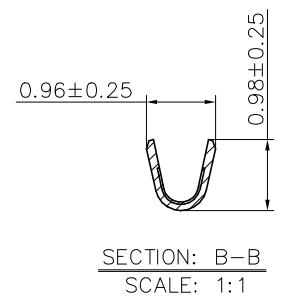
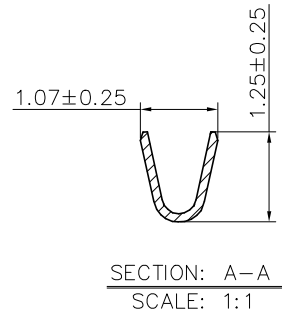


NOTE:  
 1.MATERIAL: PHOSPHOR BRONZE  
 2.FINISH  
 CONTACT AREA: REFER TO ORDERING CODE  
 CRIMPING AREA: GOLD FLASH FOR GOLD PLATED  
 TIN FOR TIN PLATED  
 3.MATE WITH HOUSING: AFCI 10157097/10164367  
 4.OPERATING TEMPERATURE: -40°C~+105°C  
 5.WIRE SIZE: AWG#28~32, INSULATION O.D.: 0.8MM MAX  
 6.ORDERING CODE: 10157098-X 0 1 LF

FINISH  
 0: BRIGHT TIN PLATING  
 1: GOLD FLASH  
 2: 15u" MIN GOLD  
 3: 30u" MIN GOLD

Amphenol FCI  
 © 2016 AFCI



mat'l. code		surface		tolerance		projection		product family		
		ISO 1302 ✓		ISO 406 ISO 1101				FITMATE		
ltr	ecn no	dr	date	tolerances unless otherwise specified		title				
A	NEW RELEASE	YS	2022-08-17	angles	.X±.50	1.00mm pitch connector Terminal				
B	ELX-N-54337	JH	2024/12/27	linear	.XX±.25	mm				
				0°±x'	.XXX±.10	scale 2:1				
		dr	Jason.Wang	2020-3-3			dwg no		sheet 1 of 1	
		enrg	Jason.Wang	2020-3-3			10157098		size	
		chr	Song.Yang	2022-08-17					A3	
		appc	Tim.Yao	2022-08-17			type		Product Customer Drawing	
sheet index	revision sheet	B	1							