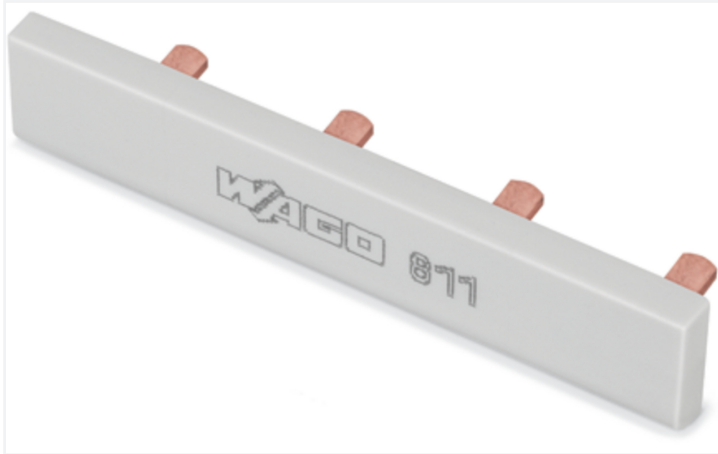


## Data Sheet | Item Number: 811-476

Jumper; 6-way; insulated; light gray

<https://www.wago.com/811-476>



Color: ■ light gray

Similar to illustration

### Electrical data

#### Ratings per IEC/EN

Nominal voltage (III/3)	1000 V
Rated current	63 A

### Material data

Note (material data)	<a href="#">Information on material specifications can be found here</a>
Color	light gray
Weight	21.7 g

### Commercial data

PU (SPU)	30 (10) pcs
Packaging type	Box
Country of origin	DE
GTIN	4050821838586
Customs tariff number	85366990990

### Product Classification

UNSPSC	39121421
eCl@ss 10.0	27-14-11-33
eCl@ss 9.0	27-14-11-40
ETIM 9.0	EC000489
ETIM 10.0	EC000489
ECCN	NO US CLASSIFICATION

### Environmental Product Compliance

RoHS Compliance Status	Compliant, No Exemption
------------------------	-------------------------

### Downloads

#### Environmental Product Compliance

<b>Compliance Search</b>	
Environmental Product Compliance 811-476	<a href="#">↓</a>

### Documentation

<b>Bid Text</b>			
811-476	19.02.2019	xml 2.52 KB	<a href="#">↓</a>
811-476	14.03.2017	doc 23.00 KB	<a href="#">↓</a>

### CAD/CAE-Data

<b>CAD data</b>	
2D/3D Models 811-476	<a href="#">↓</a>

<b>CAE data</b>	
EPLAN Data Portal 811-476	<a href="#">↓</a>
WSCAD Universe 811-476	<a href="#">↓</a>
ZUKEN Portal 811-476	<a href="#">↓</a>

### Installation Notes

#### Commoning



Jumper bar for quick and convenient commoning

Subject to changes. Please also observe the further product documentation!

Current addresses can be found at: [www.wago.com](http://www.wago.com)