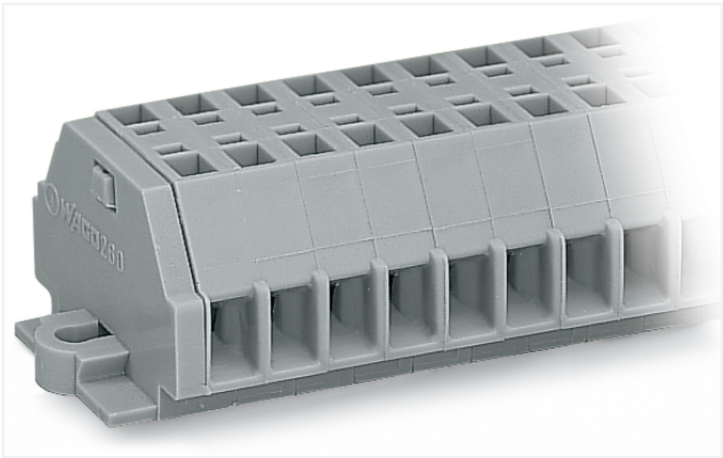


**Data Sheet | Item Number: 260-111**

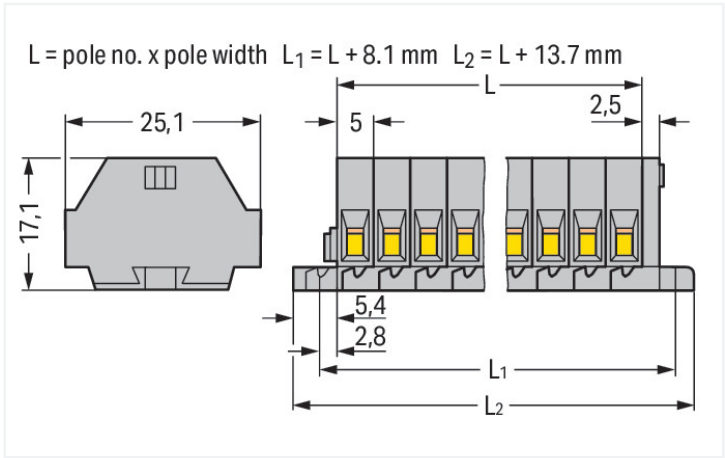
2-conductor terminal strip; without push-buttons; with fixing flanges; 11-pole; for screw or similar mounting types; Fixing hole 3.2 mm Ø; 1.5 mm²; CAGE CLAMP®; gray

<https://www.wago.com/260-111>



Color: ■ gray

Similar to illustration



Dimensions in mm

**Through terminal block, 260 Series, CAGE CLAMP®**

This through terminal block (item number 260-111) is designed for quick and simple connections. Whether for use in industry or building installations, our rail-mount through terminal blocks make it easy to quickly and securely connect electrical conductors. They're perfect for either classic through-wiring or distributing potential, depending on the variant. Rated current and voltage are key factors to consider when selecting a mini rail-mount terminal block, as they indicate possible applications and uses. This product has a rated voltage of 400 V and a rated current of 18 A. Conductors should only be connected to this through terminal block if their strip length is between 8 mm and 9 mm. This product features conductor terminals and utilizes CAGE CLAMP®. Our highly-rated and maintenance-free CAGE CLAMP® connection makes it easy to connect all types of conductors without having to prepare the conductor. For example, you don't need to crimp ferrules. The dimensions are 68.7 x 17 x 25.1 mm (width x height x depth). This through terminal block is suitable for conductor cross sections ranging from 0.08 mm² to 1.5 mm². It has one level. Eleven potentials can connect eleven poles using the twenty-two clamping points. The gray housing is made of polyamide (PA66) for insulation. An operating tool is used to operate this mini rail-mount terminal block. You can connect copper conductors via side-entry wiring.

Electrical data				
Ratings per IEC/EN		Approvals per		
Nominal voltage (III/3)	400 V	UL 1059		
Rated impulse withstand voltage (III / 3)	6 kV	Use group	B	C
Rated current	18 A	Rated voltage	300 V	300 V
Legend (ratings)	(III / 3) ≙ Overvoltage category III / Pollution degree 3	Rated current	10 A	10 A
				5 A
Approvals per		CSA 22.2 No 158		
Use group	B	C	D	
Rated voltage	-	300 V	-	
Rated current	-	10 A	-	



Connection data			
Clamping units	22	<b>Connection 1</b>	
Total number of potentials	11		
Number of levels	1		
		Connection technology	CAGE CLAMP®
		Actuation type	Operating tool
		Connectable conductor materials	Copper
		Solid conductor	0.08 ... 1.5 mm² / 28 ... 16 AWG
		Fine-stranded conductor	0.08 ... 1.5 mm² / 28 ... 16 AWG
		Strip length	8 ... 9 mm / 0.31 ... 0.35 inches
		Pole number	11
		Wiring direction	Side-entry wiring

Physical data		
Width	68.7 mm / 2.705 inches	
Height	25.1 mm / 0.988 inches	
Depth	17.1 mm / 0.673 inches	
Module width	5 mm / 0.197 inches	

Mechanical data		
Design	horizontal type	
Mounting type	Mounting flange	
Marking level	Side marking	

Material data		
Note (material data)	<a href="#">Information on material specifications can be found here</a>	
Color	gray	
Material group	I	
Insulation material (main housing)	Polyamide (PA66)	
Flammability class per UL94	V0	
Fire load	0.379 MJ	
Weight	18.6 g	

Environmental requirements		
Processing temperature	-35 ... +85 °C	
Continuous operating temperature	-60 ... +105 °C	

Commercial data		
PU (SPU)	25 pcs	
Packaging type	Box	
Country of origin	DE	
GTIN	4044918598903	
Customs tariff number	85369010000	



Product classification		
UNSPSC		39121410
eCl@ss 10.0		27-14-11-06
eCl@ss 9.0		27-14-11-06
ETIM 9.0		EC001284
ETIM 8.0		EC001284
ECCN		NO US CLASSIFICATION

Environmental Product Compliance		
RoHS Compliance Status		Compliant,No Exemption

Approvals / Certificates

General approvals			Declarations of conformity and manufacturer's declarations		
			Approval	Standard	Certificate Name
Approval	Standard	Certificate Name	EU-Declaration of Confor-	-	-
CCA	EN 60998	NTR-NL 6508	mity		
DEKRA Certification B.V.			WAGO GmbH & Co. KG		
CCA	EN 60998	2110272.01	UK-Declaration of Confor-	-	-
DEKRA Certification B.V.			mity		
CSA	C22.2	70010891	WAGO GmbH & Co. KG		
DEKRA Certification B.V.					
UL	UL 1059	E45172			
Underwriters Laboratories Inc.					

Approvals for marine applications

Approval	Standard	Certificate Name
ABS	-	19-HG1869868-PDA
American Bureau of Ship-		
ping		
DNV GL	-	TAE00001V2
Det Norske Veritas, Ger-		
manischer Lloyd		
LR	IEC 60998	LR22173030TA
Lloyds Register		

Downloads

Environmental Product Compliance		
Compliance Search		
Environmental Product Compliance 260-111		



Documentation

Bid Text			
260-111	19.02.2019	xml 3.11 KB	
260-111	14.06.2017	doc 24.00 KB	

CAD/CAE-Data

CAD data
2D/3D Models 260-111

CAE data
EPLAN Data Portal 260-111
WSCAD Universe 260-111
ZUKEN Portal 260-111

1 Compatible Products

1.1 Optional Accessories

1.1.1 Ferrule

1.1.1.1 Ferrule

<b>Item No.: 216-301</b> Ferrule; Sleeve for 0.25 mm² / AWG 24; insulated; electro-tin plated; yellow	<b>Item No.: 216-131</b> Ferrule; Sleeve for 0.25 mm² / AWG 24; uninsulated; electro-tin plated; silver-colored	<b>Item No.: 216-302</b> Ferrule; Sleeve for 0.34 mm² / 22 AWG; insulated; electro-tin plated; light turquoise	<b>Item No.: 216-201</b> Ferrule; Sleeve for 0.5 mm² / 20 AWG; insulated; electro-tin plated; electrolytic copper; acc. to DIN 46228, Part 4/09.90; white
<b>Item No.: 216-101</b> Ferrule; Sleeve for 0.5 mm² / AWG 22; uninsulated; electro-tin plated; silver-colored	<b>Item No.: 216-202</b> Ferrule; Sleeve for 0.75 mm² / 18 AWG; insulated; electro-tin plated; gray	<b>Item No.: 216-102</b> Ferrule; Sleeve for 0.75 mm² / AWG 20; uninsulated; electro-tin plated; silver-colored	<b>Item No.: 216-203</b> Ferrule; Sleeve for 1 mm² / AWG 18; insulated; electro-tin plated; red
<b>Item No.: 216-103</b> Ferrule; Sleeve for 1 mm² / AWG 18; uninsulated; electro-tin plated	<b>Item No.: 216-204</b> Ferrule; Sleeve for 1.5 mm² / AWG 16; insulated; electro-tin plated; black	<b>Item No.: 216-104</b> Ferrule; Sleeve for 1.5 mm² / AWG 16; uninsulated; electro-tin plated; silver-colored	

1.1.2 Installation

1.1.2.1 Mounting accessories

<b>Item No.: 209-137</b> Mounting adapter; can be used as end stop; 6.5 mm wide; gray	<b>Item No.: 209-123</b> Mounting foot with screw; can be screwed on terminal blocks with fixing flange; 6.4 mm wide; gray

1.1.3 Jumper

1.1.3.1 Jumper



**Item No.: 260-402**  
Jumper; for conductor entry; 2-way; insulated; gray

1.1.4 Marking

1.1.4.1 Marking strip



**Item No.: 210-833**  
Marking strips; 25 m on roll; 6 mm wide; plain; Self-adhesive; white

1.1.5 Test and measurement

1.1.5.1 Testing accessories



**Item No.: 260-404**  
Test plug module; with locking latches; modular; for 2-conductor terminal blocks; for 260 Series; gray



**Item No.: 249-135**  
Test plug module; without locking device; modular; for 2-conductor terminal blocks; gray

1.1.6 Tool

1.1.6.1 Operating tool



**Item No.: 210-658**  
Operating tool; Blade: 3.5 x 0.5 mm; with a partially insulated shaft; angled; short; multicoloured



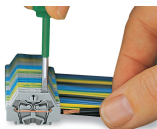
**Item No.: 210-720**  
Operating tool; Blade: 3.5 x 0.5 mm; with a partially insulated shaft; multicoloured



**Item No.: 210-657**  
Operating tool; Blade: 3.5 x 0.5 mm; with a partially insulated shaft; short; multicoloured

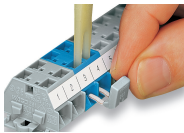
Installation Notes

Conductor termination

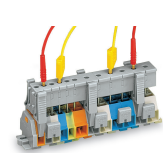


**CAGE CLAMP® connection**  
Inserting a conductor.  
With ferruled conductors, it is necessary to use a terminal block one size larger than the conductor's nominal cross-section.

Commoning

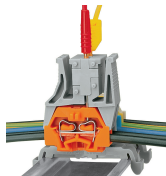


Commoning with comb-style jumper bar.



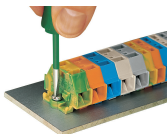
Testing via test plug modules snapped onto a terminal strip – wired or unwired. As touch contact is made with the CAGE CLAMP® (spring steel) unit, this testing type is limited to maximum 0.5 A.

Distance between locking devices must be approximately 35 ... 40 mm!

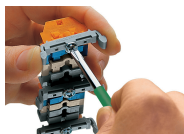


Testing after the conductors have been terminated.

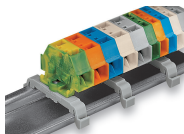
Installation



Mounting and securing a terminal strip directly to the plate via screw-type flanges.



Terminal strip with mounting flanges  
Screwing a mounting foot (209-123).  
(Distance between mounting feet: approx. 25 ... 30 mm)



Terminal strip; with mounting flanges; for DIN-35 rail



Terminal strip with mounting flanges, for screw or similar mounting types, 3.2 mm mounting hole diameter (with 209-123 Mounting Foot also for DIN-35 rail)

Marking



Marking with self-adhesive marking strips.



Marking by direct printing (upon request).

Subject to changes. Please also observe the further product documentation!

Current addresses can be found at: [www.wago.com](https://www.wago.com)