



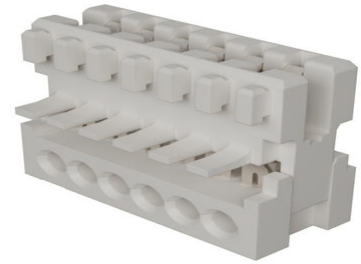
Part Number : [930501501](#)

Product Description : 2.50mm Pitch Appli-Mate RAST 2.5 Female Connector, 6 Circuits, All Position Keys, Open Endwalls, Glow-Wire Capable

Series Number : 93050

Status : Active

Product Category : Connector Housings



Documents and Resources

Drawings

[930501501_sd.pdf](#)

[STEP AP242](#)

[SOLIDWORKS](#)

[Creo](#)


Specifications

[990330008-000.pdf](#)

[PS-99020-0040-001.pdf](#)

Product Environment Compliance

Compliance

GADSL/IMDS	Compliant with Exemption 44
China RoHS	 per SJ/T 11365-2006
EU ELV	Not Relevant
Low-Halogen Status	Not Low-Halogen per IEC 61249-2-21
REACH SVHC	Not Contained per D(2025)6375-DC (05 Nov 2025) SCIP:
EU RoHS	Compliant per EU 2015/863

Compliance Statements

- EU RoHS
- REACH SVHC
- Low-Halogen

Industry Documents

- IPC 1752A Class C
- IPC 1752A Class D
- Molex Product Compliance Declaration
- IEC-62474
- chemSHERPA (xml)

Substances of Interest

- PFAS

EU RoHS Certificate of Compliance

Additional Product Compliance Information

Part Details

General

Status	Active
Category	Connector Housings
Series	93050
Description	2.50mm Pitch Appli-Mate RAST 2.5 Female Connector, 6 Circuits, All Position Keys, Open Endwalls, Glow-Wire Capable
Comments	Various possibilities for temperature range: 4 Amp:-20°C to + 60°C with header 2 Amp:-20°C to +120°C double sided PCB or Header 2 Amp: -20°C to +110°C single sided PCB; This Molex product is manufactured from material that has the following ratings, tested by independent agencies: a) A Glow Wire Ignition Temperature (GWIT) of at least 775 deg C per IEC 60695-2-13. b) A Glow Wire Flammability Index (GWFI) above 850 deg C per IEC 60695-2-12 and hence complies with the requirements set out in the International Standard IEC 60335-1 5th edition - household and similar electrical appliances - safety, section 30 Resistance to heat and fire. The customers

	using this product must determine its suitability for use in their particular application through testing or other acceptable means as described in end-product glow-wire flammability test standard IEC 60695-2-11 and any applicable product end-use standard(s). If it is determined during the customer's evaluation of suitability, that higher performance is required, please contact Molex for possible product options.
Product Name	RAST 2.5
UPC	883906496388

Agency

CSA	LR19980
UL	E29179

Electrical

Voltage - Maximum	32V AC
-------------------	--------

Physical

Circuits (Loaded)	6
Circuits (maximum)	6
Color - Resin	Natural (White)
Durability (mating cycles max)	10
Gender	Female
Glow-Wire Capable	Yes
Lock to Mating Part	None
Material - Metal	Phosphor Bronze
Material - Plating Mating	Tin
Material - Plating Termination	Tin
Material - Resin	Polyamide
Net Weight	1.352/g

Number of Rows	1
Packaging Type	Tray
Panel Mount	No
Pitch - Mating Interface	2.50mm
Pitch - Termination Interface	2.50mm
Plating min - Mating	1.016µm
Plating min - Termination	1.016µm
Polarized to Mating Part	Yes
Stackable	No
Temperature Range - Operating	-20° to +110°C, -20° to +120°C, -20° to +60°C
Termination Interface Style	IDT or Pierce
Wire Size (AWG)	22, 24

Mates With / Use With

Mates with Part(s)

Description	Part Number
2.50mm Pitch Appli-Mate RAST 2.5 Vertical Headers	<u>93070</u>

Use with Part(s)

Description	Part Number
Use With	RAST standard Interface

Application Tooling

Global

Description	Part Number
RAST 2.5 and R-Power Semi- Automatic IDC Machine	<u>2166580100</u>
Hand Tool for Appli-Mate RAST 2.5, RAST Signal, and R-Power Connectors	<u>638272900</u>

This document was generated on Dec 30, 2025