

PRODUCT PARTNUMBER
10152832-XXXXX0LF

PARTNO &
DATECODE

#AI IDENTIFIER

(0.30)

1.78±0.05

11.65

(14.50)

CL OF KEY

DIM "B"

DIM "D"

DIM "A"

1.50

1.50

10.00

(1.77)

0.15

(0.35) TYP

1.66

1.36

1.00 TYP

3X 0.40

13.67

DIM "C"

BLADE
HOLD-DOWN

HOUSING

ECB

SECTION B-B
SCALE 3:1

3.75 MAX

11.25 MAX

DIM "X"

0.90

7.40

8.20

0.10

(4.40)

(3.35)

2X 1.80

spec ref	-	dr	Cheong, Matthe	2019/08/26
tolerance std	ISO 406 ISO 1101	eng	Cheong, Matthe	2022/10/10
	TOLERANCES UNLESS OTHERWISE SPECIFIED	chr	-	-
		appr	Koon-Poh Tay	2022/10/14
surface	linear	0.X	±0.30	
		0.XX	±0.20	
		0.XXX	±0.1	
ISO 1302	angular	0°	±2°	

Amphenol
FCi

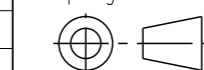
www.fci.com

PCI Express 5.0 (32Gb/s)
SMT Type- 3X BLADES

cat. no.

Product - Customer Drw

sheet 1 of 4



MM

size
A3

scale
3:1

ecn no ELX-S-46065-1

product family PCI express

rel level Released

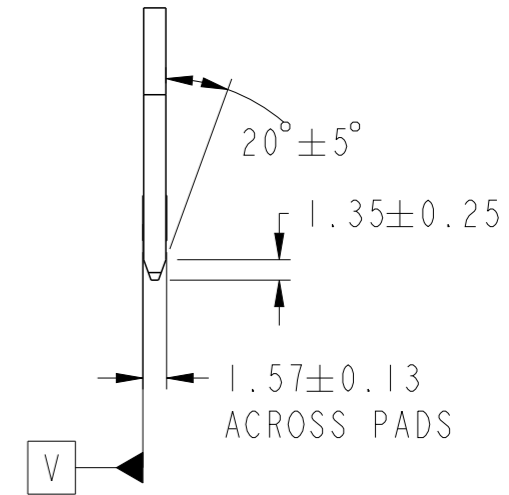
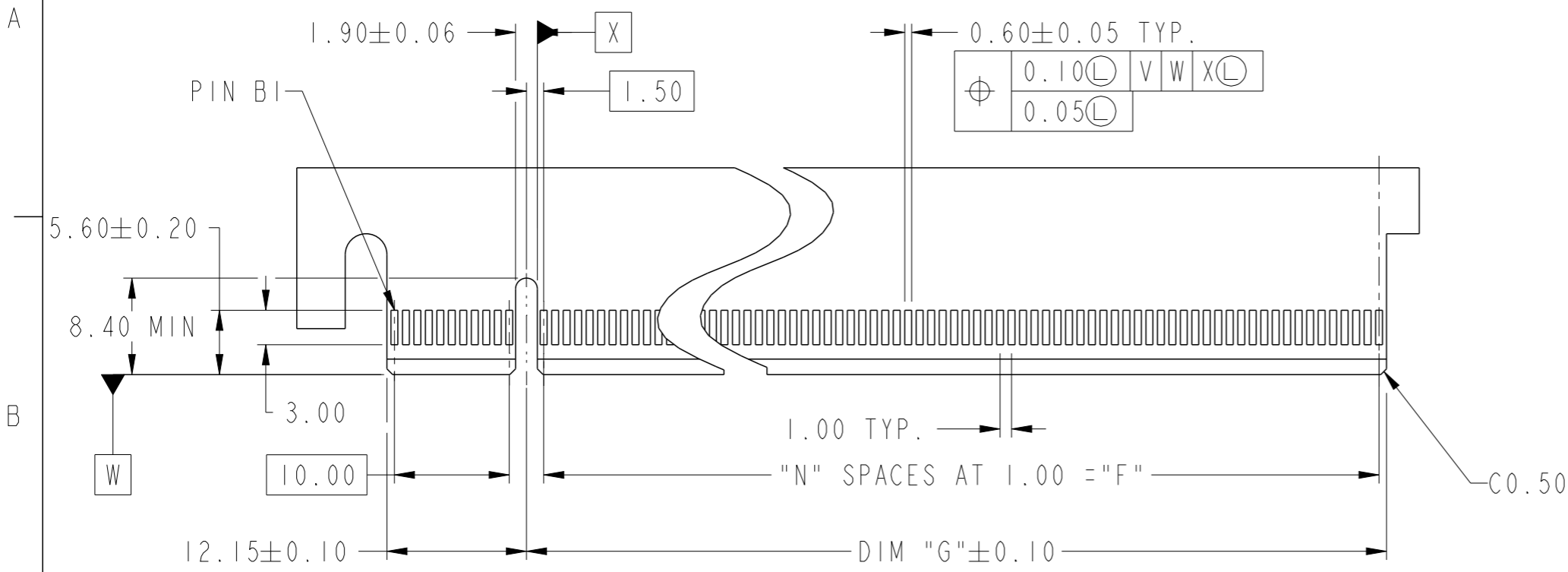
dwg no

10152832

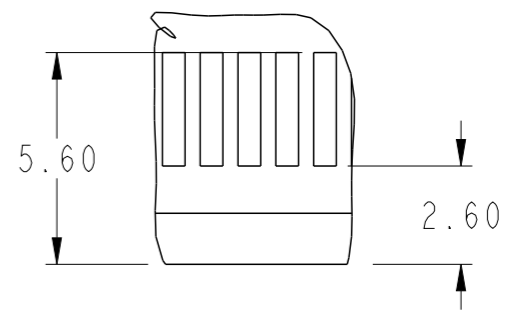
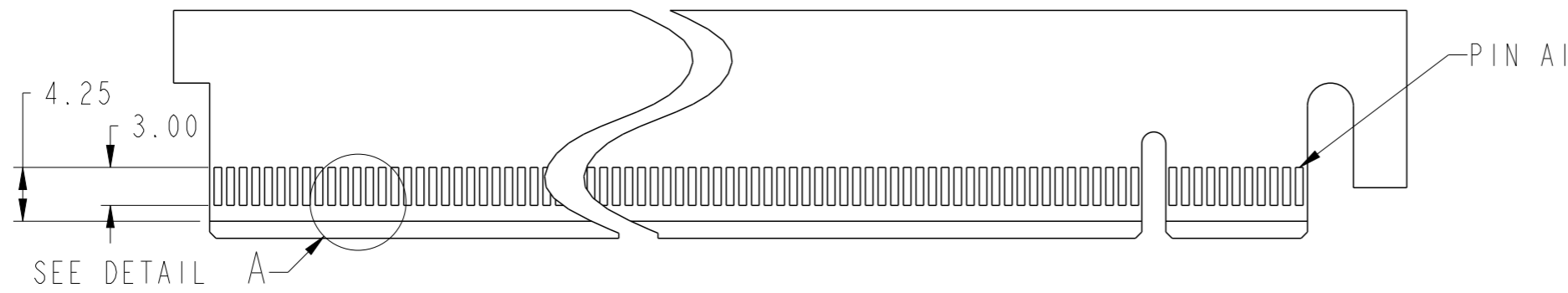
rev

B

CONNECTOR LINK WIDTH	POSITION	N	DIM "G"	DIM "F"	PIN "L"
X8	98	37	39.15	37.00	B48
X16	164	70	72.15	70.00	B81



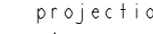

← I/O PANEL DIRECTION
PRIMARY (COMPONENT) SIDE



DETAIL A
SCALE 5:1

I/O PANEL DIRECTION →
SECONDARY (SOLDER) SIDE

1. NO TIE BAR PERMITTED FROM CARD EDGE TO LEADING EDGE OF PAD FOR PIN AI AND PIN "L".
2. CHAMFER EDGES MUST BE FREE OF CUTTING BURRS.
3. TOLERANCE : ± 0.13

spec ref		-		dr	Cheong, Matthe	2019/08/26			size	A3	scale	2:1
tolerance std	TOLERANCES UNLESS OTHERWISE SPECIFIED			eng	Cheong, Matthe	2022/10/10			ecn no	ELX-S-46065-1		
				chr	-	-						
ISO 406				appr	Koon-Poh Tay	2022/10/14	product family	PCI express		rel level	Released	
ISO 1101												
surface	linear	0.X	±0.30	Amphenol FCI	title PCI Express 5.0 (32Gb/s)			dwg no	10152832			rev
		0.XX	±0.20									
		0.XXX	±0.1									
	ISO 1302	angular	0°	±2°	www.fci.com	cat. no.			Product - Customer Drw			sheet 2 of 4
B												

Amphenol FCI

© 2020 Amphenol Corporation

RECOMMENDED PCB LAYOUT, PAD TYPE

ALTERNATE PCB LAYOUT, PAD TYPE

DIMENSIONS							
POSITION	A	B $\begin{smallmatrix} +0.15 \\ -0.05 \end{smallmatrix}$	C ± 0.10	D ± 0.23	J	K ± 0.1	L
98	37.00	38.65	40.15	56.00	37.00	40.15	37.70
164	70.00	71.65	73.15	89.00	70.00	73.15	70.70

spec ref -				dr	Cheong, Matthe	2019/08/26			size	A3	scale	4:1		
tolerance std				eng	Cheong, Matthe	2022/10/10			ecn no	ELX-S-46065-1				
ISO 406				chr	-	-								
ISO 1101				appr	Koon-Poh Tay	2022/10/14							product family	
surface - 	linear	0.X	±0.30		PCI Express 5.0 (32Gb/s)					dwg no	10152832		rev	B
		0.XX	±0.20											
		0.XXX	±0.1											
	ISO 1302	angular	0°	±2°	www.fci.com	cat. no.	-	Product - Customer Drw					sheet 3 of 4	

PRODUCT NUMBER CODE

10152832- 0LF

HOUSING COLOR

1: BLACK

CONTACT AREA PLATING

1: 30u" Au
2: 15u" Au

NO. OF POSITION

2: 98 POSITIONS
3: 164 POSITIONS

PACKAGING OPTIONS



B: HARD TRAY (DIM: 323x136x19) WITH KAPTON TAPE, 86.5MM (164 POS)
Y: HARD TRAY (DIM: 330x235x19.3) WITH KAPTON TAPE, 22MM (98 & 164 POS)
Z: HARD TRAY (DIM: 330x235x19.3) WITH KAPTON TAPE, 86.5MM (164 POS)

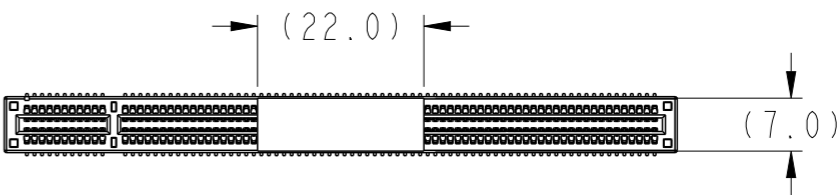
HOLDDOWN BLADE LENGTH, DIM "X"

1: 1.5
2: 1.8
3: 2.6

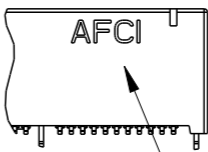
NOTES:

1. MATERIAL:
HOUSING: HIGH PERFORMANCE RESINS, GLASS FILLED, UL94V-0
CONTACT: COPPER ALLOY.
METAL PADS: COPPER ALLOY
2. PLATING:
CONTACT: UNDERPLATE: 50u" NICKEL OVER ALL.
SOLDER AREA: 100u" TIN (LEAD FREE).
MATING AREA: SEE PRODUCT NUMBER CODE.
HOLDDOWN CLIP: 100u" TIN OVER 50 u" NICKEL.
3. PRODUCT SPECIFICATION: GS-12-1406
4. PRODUCT MEETS EUROPEAN UNION DIRECTIVES AND
OTHER COUNTRY REGULATIONS AS DESCRIBED IN GS-47-004.
5. DATE CODE "MMDDYYL", MMDDYY IS ASSEMBLY DATE.
L IS AFCI PRODUCTION SITE.
6. THE HOUSING WILL WITHSTAND EXPOSURE TO 260°
PEAK TEMPERATURE FOR 10 SECONDS IN A
CONVECTION, INFRA-RED OR VAPOR PHASE
REFLOW OVEN.
7. THERE IS GROUND BUSSING WITHIN THE CONNECTOR SYSTEM,
FOR DIFFERENTIAL PAIR'S GROUND LOCATION,
PLEASE REFER TO THE CONNECTOR PINOUT TABLE
FROM CHAPTER 6 OF PCI EXPRESS CARD
ELECTROMECHANICAL SPECIFICATION.

POSITION OF KAPTON TAPE



SCALE 1:1



DATE CODE &
PARTNO

spec ref -				dr		Cheong, Matthe	2019/08/26		projection		MM		size		A3		scale		2:1						
tolerance std		TOLERANCES UNLESS OTHERWISE SPECIFIED				eng		Cheong, Matthe		2022/10/10				ecn no		ELX-S-46065-1									
ISO 406						chr		-		-															
ISO 1101						appr		Koon-Poh Tay		2022/10/14						product family		PCI express		rel level		Released			
surface						linear		0.X		±0.30		Amphenol FCI		title		PCI Express 5.0 (32Gb/s)		dwg no		10152832		rev		B	
		0.XX		±0.20																					
		0.XXX		±0.1																					
ISO 1302		angular		0°		±2°		www.fci.com		cat. no.		Product - Customer Drw		sheet 4 of 4											