



Part Number : [15246101](#)

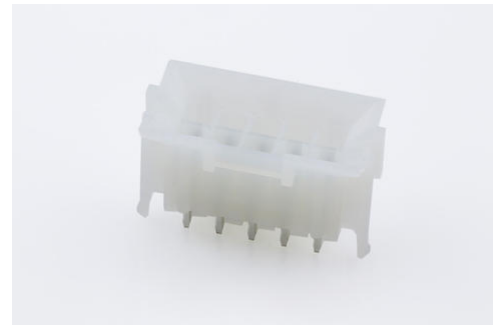
Product Description : Mini-Fit BMI Header, 4.20mm Pitch, Dual Row, Vertical, with Snap-in Plastic Peg PCB Lock, 10 Circuits, Nylon 6/6 UL 94V-2, Tin (Sn) Plating, without Drain Holes

Series Number : 42440

Status : Active

Product Category : PCB Headers and Receptacles

Engineering Part Number : A-42440-1011



Documents and Resources

Drawings

[015246101_sd.pdf](#)

[PK-42440-001-001.pdf](#)

3D Models and Design Files

[STEP AP242](#)

[SOLIDWORKS](#)

[Creo](#)

[Symbol and Footprint \(Multi-Format\)](#)

[SYM-A42440-10XX-001.zip](#)

Specifications

[55560002-PS-CH-000.pdf](#)

[55560002-PS-ES-000.pdf](#)


[55560002-PS-SK-000.pdf](#)

[PS-5556-002-001.pdf](#)

[TS-5556-002-001.pdf](#)

Product Environment Compliance

Compliance

GADSL/IMDS	Compliant with Exemption 33; 44
China RoHS	 per SJ/T 11365-2006
EU ELV	Not Relevant

Low-Halogen Status	Low-Halogen per IEC 61249-2-21
REACH SVHC	Not Contained per D(2025)7771-DC (04 Feb 2026)
EU RoHS	Compliant per EU 2015/863

Compliance Statements

- EU RoHS
- REACH SVHC
- Low-Halogen

Industry Documents

- IPC 1752A Class C
- IPC 1752A Class D
- Molex Product Compliance Declaration
- IEC-62474
- chemSHERPA (xml)

Substances of Interest

- PFAS

EU RoHS Certificate of Compliance

Additional Product Compliance Information

Part Details

General

Status	Active
Category	PCB Headers and Receptacles
Series	42440
Description	Mini-Fit BMI Header, 4.20mm Pitch, Dual Row, Vertical, with Snap-in Plastic Peg PCB Lock, 10 Circuits, Nylon 6/6 UL 94V-2, Tin (Sn) Plating, without Drain Holes
Application	Board-to-Board, Wire-to-Board
Comments	Current = 13A max. per circuit when header is mated to a receptacle loaded with 45750 Mini-Fit Plus HCS Crimp Terminal Crimped to 16 AWG wire. See Molex product specification PS-45750-001 for additional current de-rating information.

Component Type	PCB Header
Product Name	Mini-Fit BMI
UPC	800753535015

Agency

CSA	LR19980
UL	E29179

Electrical

Current - Maximum per Contact	13.0A
Voltage - Maximum	600V

Physical

Breakaway	No
Circuits (Loaded)	10
Circuits (maximum)	10
Color - Resin	Natural
Durability (mating cycles max)	30
First Mate / Last Break	No
Gender	Male
Glow-Wire Capable	No
Guide to Mating Part	Yes
Lock to Mating Part	Yes
Material - Metal	Brass
Material - Plating Mating	Tin
Material - Plating Termination	Tin
Material - Resin	Nylon
Mounting Style	Through Hole
Net Weight	2.571/g
Number of Rows	2
Orientation	Vertical
Packaging Type	Tray
PCB Locator	No
PCB Retention	Yes
PCB Thickness - Recommended	1.78mm

PC Tail Length	3.50mm
Pitch - Mating Interface	4.20mm
Pitch - Termination Interface	4.20mm
Plating min - Mating	2.540µm
Plating min - Termination	2.540µm
Polarized to Mating Part	Yes
Polarized to PCB	Yes
Shrouded	Shrouded
Stackable	No
Temperature Range - Operating	-40° to +105°C
Termination Interface Style	Through Hole

Solder Process Data

Max-Duration	5
Lead-Free Process Capability	WAVE
Max-Cycle	1
Max-Temp	240

Mates With / Use With

Mates with Part(s)

Description	Part Number
Mini-Fit BMI Receptacle Housing, 4.20mm Pitch, Dual Row with Panel Mount Ears, Nylon, UL 94V-2, 10 Circuits	<u>15060100</u>
Mini-Fit BMI Receptacle Header, 4.20mm Pitch, Dual Row, Vertical, with Snap-In Plastic Pegs, Brass Terminal, Matte Tin (Sn) Plating, Nylon UL 94V-2, 10 Circuits	<u>15247100</u>
Mini-Fit Jr. Receptacle Housing, Dual Row, 10 Circuits, UL 94V-2, Natural	<u>39012100</u>
Mini-Fit Jr.-to-Mini-Fit Jr. Off-the-Shelf (OTS) Overmolded Cable Assemblies	<u>245135</u>

This document was generated on May 27, 2026