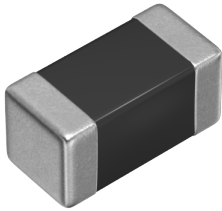


MLF1608E120KTD00



Applications	Commercial Grade
Feature	No Directivity
	Multilayer
	Magnetic Shield
	Ferrite Core
Series   Type	MLF
Status	Production
Brand	TDK



Size	
Length(L)	1.60mm ±0.15mm
Width(W)	0.80mm ±0.15mm
Thickness   Height	0.80mm ±0.15mm
Recommended Land Pattern (A)	0.60mm Nom.
Recommended Land Pattern (B)	0.80mm Nom.
Recommended Land Pattern (C)	0.80mm Nom.

Electrical Characteristics	
Inductance	12μH ±10% at 2MHz
Rated Current (L Change) [Typ.]	
Rated Current (L Change) [Max.]	10mA
Rated Current (Temperature Rise) [Typ.]	
Rated Current (Temperature Rise) [Max.]	
DC Resistance [Typ.]	1.2Ω
DC Resistance [Max.]	1.8Ω
Rated Voltage [Max.]	
Self Resonant Frequency [Min.]	25MHz
Self Resonant Frequency [Typ.]	45MHz
Q [Min.]	30 at 2MHz
Q [Typ.]	55 at 2MHz

Other	
Operating Temp. Range	-55 to 125°C
Soldering Method	Reflow
	Iron Soldering
AEC-Q200	NO
Packing	Punched (Paper)Taping [180mm Reel]

! Images are for reference only and show exemplary products.  
! This PDF document was created based on the data listed on the TDK Corporation website.  
! All specifications are subject to change without notice.

MLF1608E120KTD00

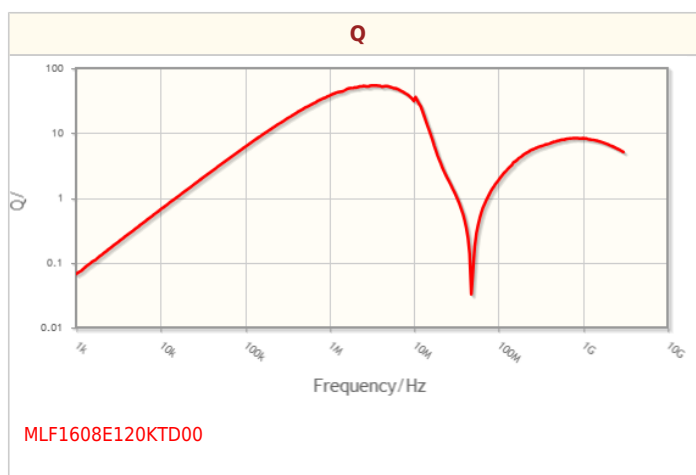
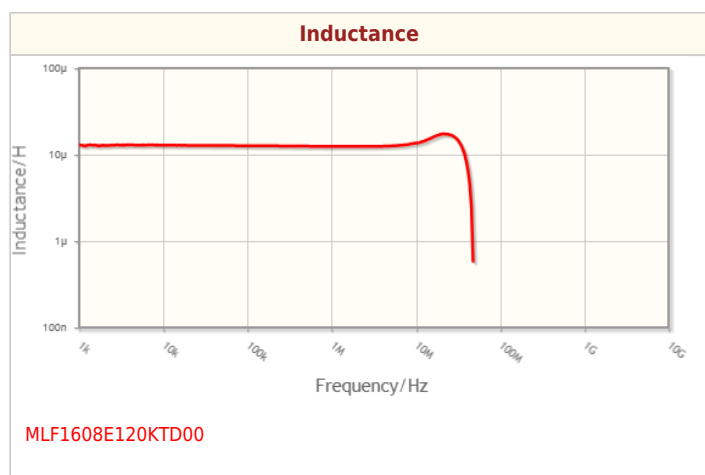
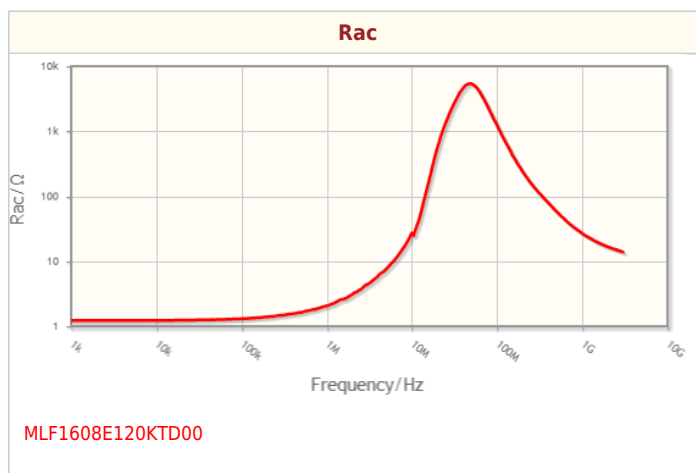
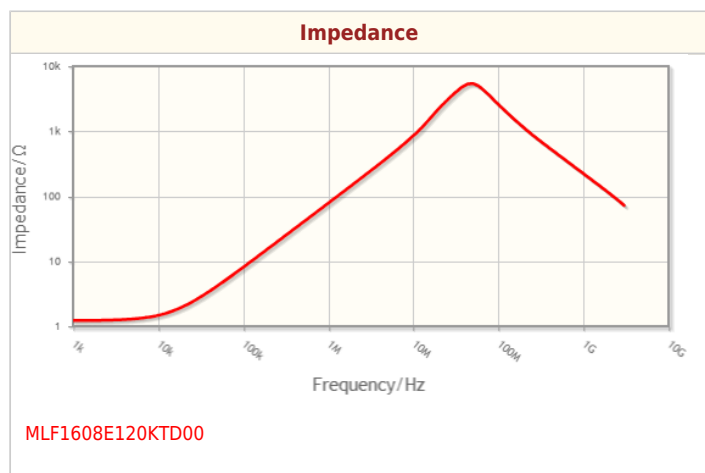


Package Quantity	4000pcs
Weight	0.004g

MLF1608E120KTD00



## Characteristic Graphs(This is reference data, and does not guarantee the products characteristics.)





# Associated Images

