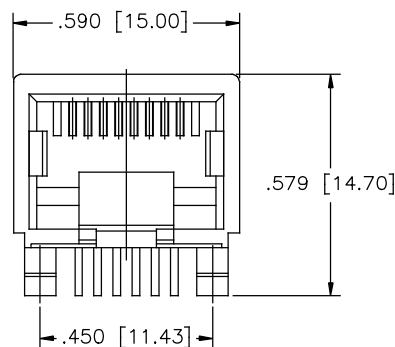
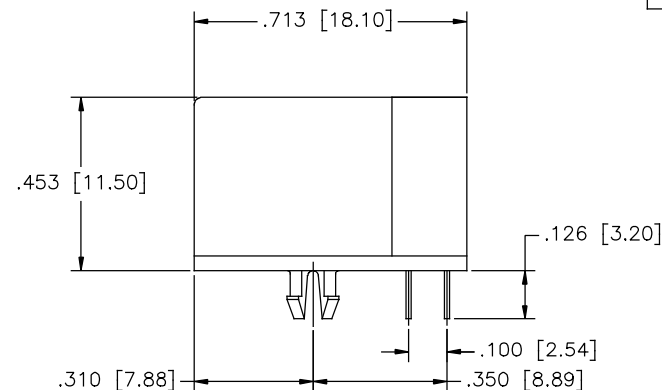


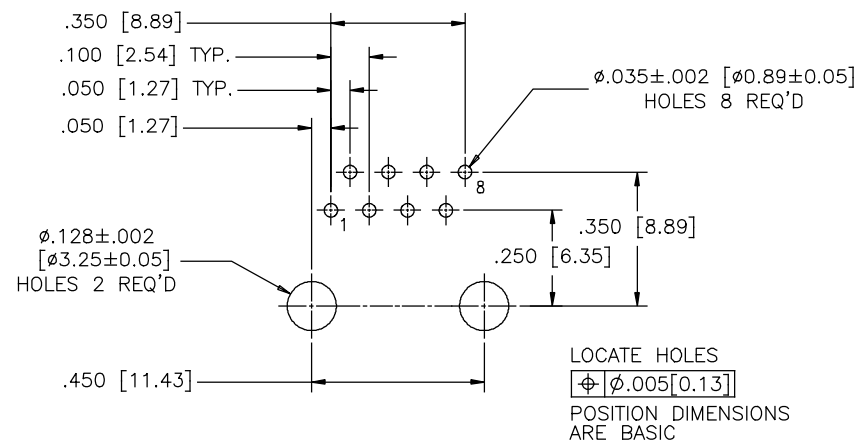
REVISIONS			
REV	DESCRIPTION, ECN, EAR NO.	DATE	APP'D
A	PROPOSAL	25/01/06	L.CHAN
B	CORRECT DRAWING	MAY.9/14	



FRONT VIEW



SIDE VIEW



RECOMMENDED P.C.B. LAYOUT
(COMPONENT SIDE OF BOARD)

MATERIALS:

PLASTIC HOUSING: ENGINEERING THERMOPLASTIC
FLAMMABILITY RATING UL94V-0. COLOUR, BLACK.

CONTACTS:

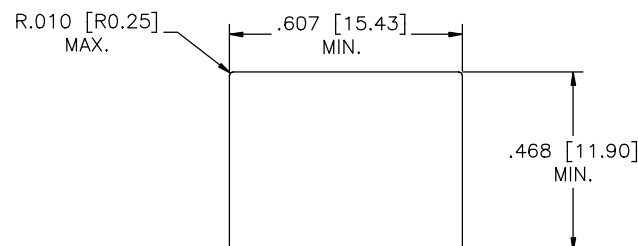
PHOSPHOR BRONZE
PLATING: REFER TO PART NUMBER FOR GOLD
THICKNESS ON MATING SURFACES.
50 μ " [1.27 MICRONS]
MIN. NICKEL UNDERPLATE.
100 μ " [2.54 MICRONS]
MIN. MATTE-TIN OR GOLD FLASH
ON CONTACT TAILS.



AMPHENOL PART NUMBER: RJE05-188-0X10

GOLD PLATING

1 = 6 μ INCH
2 = 15 μ INCH
3 = 30 μ INCH
4 = 50 μ INCH



RECOMMENDED PANEL CUTOUT

UNLESS SPECIFIED OTHERWISE		DRAWN	CHIGOW	25/01/06	Amphenol Canada Corp. www.amphenolcanada.com	
PRIMARY UNITS	INCHES	CHECKED	L.CHAN	25/01/06		
SECONDARY	MILLIMETERS	M.E. APP'D			RJE05 SERIES MODULAR JACK, 8 POSITION, 8 CONTACTS, UNSHIELDED ULTRA LOW PROFILE - RoHS COMPLIANT	
REFERENCE IN PARENTHESES		Q.A. APP'D				
1 DECIMAL PLACE		DWG APP'D			DWG NO. P-RJE05-188-0X10	
2 DECIMAL PLACES		ENG. REL. NO.				
3 DECIMAL PLACES	±0.015	REF.			REV B	
ANGULAR DEGREES	±1.5°	THIRD ANGLE PROJECTION				
		DO NOT SCALE DRAWING			CODE ID NO. 03554	DWG SIZE
					SCALE	SHEET 1 OF 1