



**Part Number :** [1053111104](#)

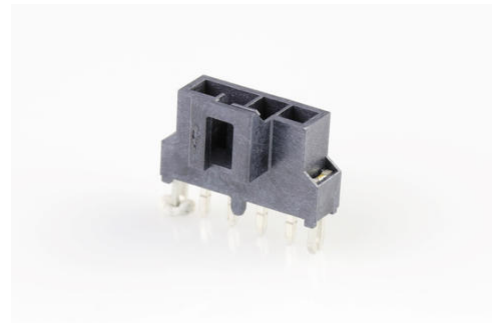
**Product Description :** Nano-Fit Vertical Header, Through Hole, 2.50mm Pitch, Single Row, 4 Circuits, with Solder Clips, Tin (Sn) Plating, Black, Glow-Wire Capable, Tray

**Series Number :** 105311

**Status :** Active

**Product Category :** PCB Headers and Receptacles

**Packaging Alternative :** [1053113504](#) (Embossed Tape on Reel)



---

## Documents and Resources

### Drawings

[1053111104 sd.pdf](#)

[PK-105309-300-000.pdf](#)

### 3D Models and Design Files

[STEP AP242](#)

[SOLIDWORKS](#)

[Creo](#)

[Symbol and Footprint \(Multi-Format\)](#)

[SYM-105311-XX04-001.zip](#)

### Specifications

[AS-105300-100-001.pdf](#)

[1053001000-PS-CH-000.pdf](#)

[1053001000-PS-ES-000.pdf](#)

[1053001000-PS-JP-000.pdf](#)

[1053001000-PS-SK-000.pdf](#)


[PS-105300-100-001.pdf](#)

[1053001000-TS-000.pdf](#)

---

## Product Environment Compliance

### Compliance

GADSL/IMDS	Compliant with Exemption 44; 33
China RoHS	 per SJ/T 11365-2006
EU ELV	Not Relevant
Low-Halogen Status	Low-Halogen per IEC 61249-2-21
REACH SVHC	Not Contained per D(2025)7771-DC (04 Feb 2026)
EU RoHS	Compliant per EU 2015/863

### Compliance Statements

- EU RoHS
- REACH SVHC
- Low-Halogen

### Industry Documents

- IPC 1752A Class C
- IPC 1752A Class D
- Molex Product Compliance Declaration
- IEC-62474
- chemSHERPA (xml)

### Substances of Interest

- PFAS

### EU RoHS Certificate of Compliance

### Additional Product Compliance Information

## Part Details

### General

Status	Active
Category	PCB Headers and Receptacles
Series	105311
Description	Nano-Fit Vertical Header, Through Hole, 2.50mm Pitch, Single Row, 4 Circuits, with Solder Clips, Tin (Sn) Plating, Black, Glow-Wire Capable, Tray
Application	Power, Wire-to-Board
Component Type	PCB Header
Product Name	Nano-Fit
UPC	887191931425

## Agency

CSA	LR19980
UL	E29179

## Electrical

Current - Maximum per Contact	7.5A
Voltage - Maximum	250V AC (RMS)/DC

## Physical

Breakaway	No
Circuits (Loaded)	4
Circuits (maximum)	4
Color - Resin	Black
Durability (mating cycles max)	25
First Mate / Last Break	No
Glow-Wire Capable	Yes
Guide to Mating Part	No
Keying to Mating Part	Yes
Lock to Mating Part	Yes
Material - Metal	Brass
Material - Plating Mating	Tin
Material - Plating Termination	Tin
Material - Resin	Liquid Crystal Polymer (LCP)
Net Weight	0.590/g
Number of Rows	1
Orientation	Vertical
Packaging Type	Tray
PCB Locator	Yes
PCB Retention	Yes
PCB Thickness - Recommended	1.60mm, 2.40mm
PC Tail Length	3.20mm
Pitch - Mating Interface	2.50mm
Pitch - Termination Interface	2.50mm
Plating min - Mating	1.524µm
Plating min - Termination	1.524µm

Polarized to Mating Part	Yes
Polarized to PCB	Yes
Shrouded	Shrouded
Stackable	No
Temperature Range - Operating	-40° to +125°C
Termination Interface Style	Through Hole

---

## Mates With / Use With

### Mates with Part(s)

Description	Part Number
Nano-Fit Receptacle Housing, TPA Capable, 2.50mm Pitch, Single Row, 4 Circuits, Black, Glow-Wire Capable	<u>1053071204</u>
Nano-Fit Receptacle Housing, TPA Capable, 2.50mm Pitch, Single Row, 4 Circuits, Black, Glow-Wire Capable, for UL 1569/1007 Wire	<u>2263541204</u>
Nano-Fit-to-Nano-Fit Single Row Off-the-Shelf (OTS) Cable Assemblies	<u>145130</u>

---

This document was generated on May 05, 2026