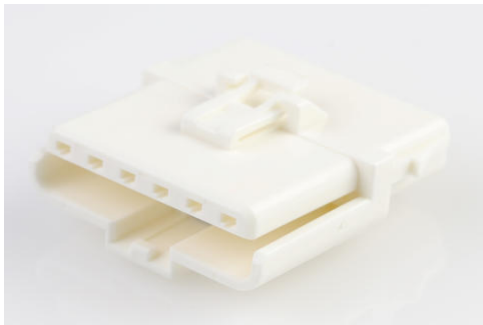




**Part Number :** [1502010006](#)  
**Product Description :** Ditto Hermaphroditic Crimp Housing, Positive Lock, 6 Circuit, Glow-Wire Capable, Natural  
**Series Number :** 150201  
**Status :** Obsolete  
**Product Category :** Connector Housings




**Documents & Resources**

[1502010006 stp.zip](#)  
**Specifications**  
[1501700000-AS-000.pdf](#)  
[TS-150170-0000-001.pdf](#)

**Product Environment Compliance**

**Compliance**

GADSL/IMDS	Not Relevant
China RoHS	 per SJ/T 11365-2006
EU ELV	Not Relevant
Low-Halogen Status	Not Low-Halogen per IEC 61249-2-21
REACH SVHC	Not Contained per D(2024)7663-DC (21 Jan 2025)
EU RoHS	Compliant per EU 2015/863

Compliance Statements

- EU RoHS
- REACH SVHC
- Low-Halogen

Industry Documents

- IPC 1752A Class C
- IPC 1752A Class D
- Molex Product Compliance Declaration
- IEC-62474

- chemSHERPA (xml)

## Substances of Interest

- PFAS

## EU RoHS Certificate of Compliance

## Additional Product Compliance Information

## Part Details

### General

Status	Obsolete
Category	Connector Housings
Series	150201
Description	Ditto Hermaphroditic Crimp Housing, Positive Lock, 6 Circuit, Glow-Wire Capable, Natural
Application	Power, Wire-to-Wire
Product Name	Ditto
UPC	889056215770

### Agency

UL	E29179
----	--------

### Physical

Circuits (maximum)	6
Color - Resin	Natural (White)
Flammability	94V-2
Gender	Hermaphroditic
Glow-Wire Capable	Yes
Keying to Mating Part	None
Lock to Mating Part	Yes
Material - Resin	Nylon
Net Weight	1.686/g
Number of Rows	1
Packaging Type	Bag
Panel Mount	No
Pitch - Mating Interface	3.00mm

Pitch - Termination Interface	3.00mm
Polarized to Mating Part	Yes
Temperature Range - Operating	-40° to +105°C, -40° to +80°C, See Product Specification

## Mates With / Use With

### Mates with Part(s)

Description	Part Number
Ditto Hermaphroditic Crimp Housings	<u>150201</u>

### Use with Part(s)

Description	Part Number
Ditto Hermaphroditic Crimp Terminal, Tin Brass, Preplated Tin, 22-20 AWG	<u>1502000001</u>
Ditto Hermaphroditic Crimp Terminal, Tin Brass, Preplated Tin, 26-24 AWG	<u>1502000002</u>
Ditto Terminal Position Assurance (TPA), 3.00mm Pitch, 6 Circuits, Glow-Wire Capable, Black	<u>1502130006</u>

This document was generated on Sep 11, 2025