


SEARCH KEYWORD, PART NUMBER 



Part Number: 10776107  
Application: Exterior, Chassis, Engine Compartment  
Product Name: [SICMA Inline sealed](#)  
12 Way F SICMA-3 2.8 Sealed Connector

 [Share](#)  [Print](#) [Contact Us About This Item](#)

This part is not currently offered in our sample program.

SEND REQUEST



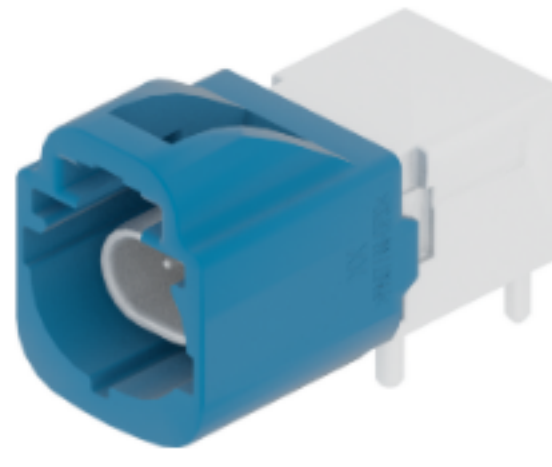
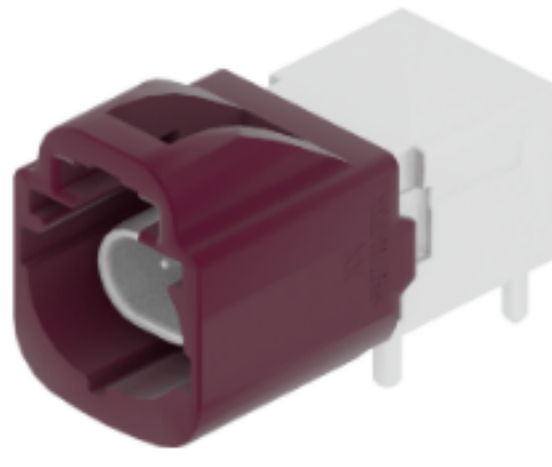
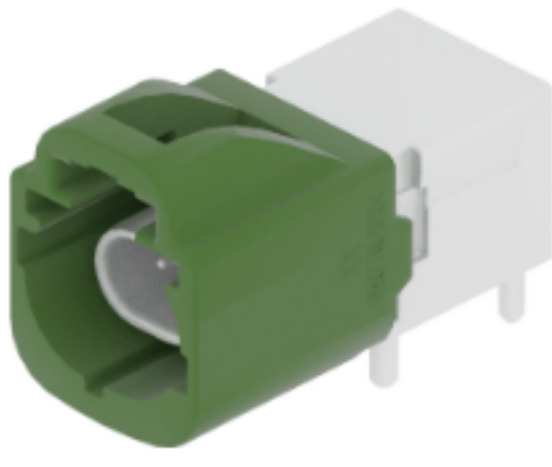
Request this part be added to the sample program.

ATTRIBUTES DOCUMENTS ECAD COMPATIBLE PARTS

Attributes

Product Family SICMA	Color BLACK
Product Series Inline sealed	Primary Locking Mechanism CAVITY LOCK
Max. operating temperature +125°C	Weight (g) 15.2
Min. operating temperature -40°C	Terminal 1 Size 2.8
No. of Ways 12	Sealing Sealed
Gender Female	Primary Material PBT
Length (mm) 38	Sealing Rating IP67
Width (mm) 70.85	Vibration Rating V1
Height (mm) 34.9	

Other Products



RESOURCE-CENTER-ITEM  
COV CONN CLIP CDT BLACK

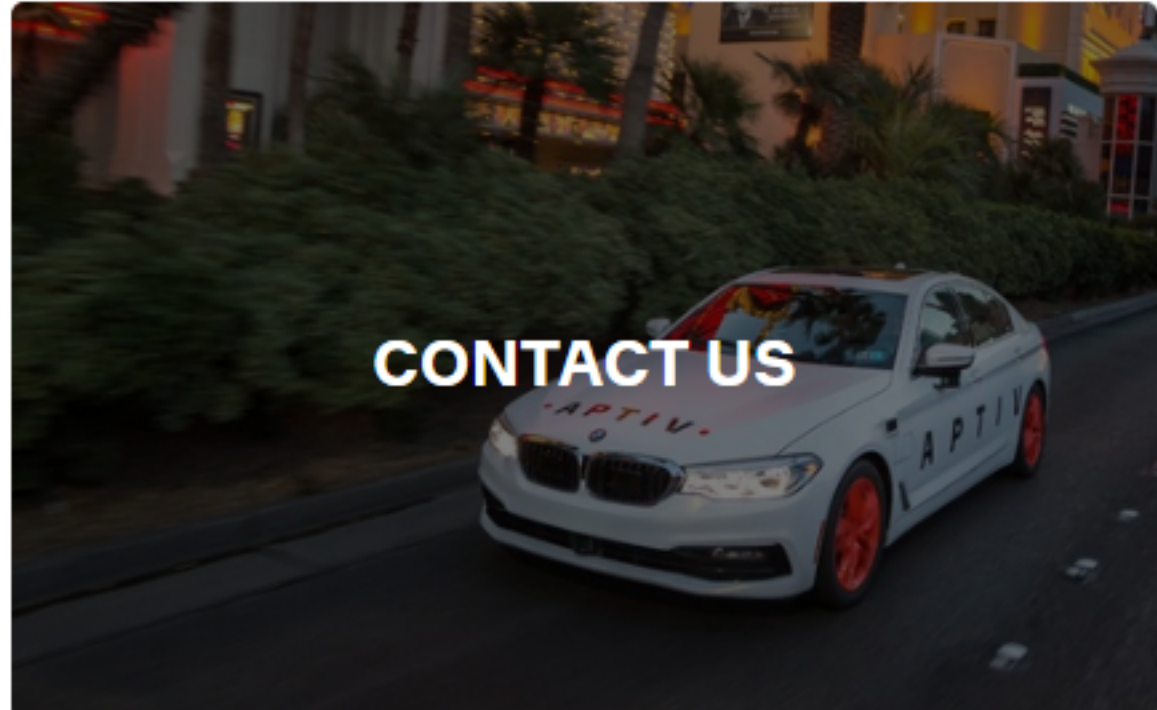
35829171  
2 Way Male 0.5 Unsealed Green

35829170  
2 Way Male 0.5 Unsealed Violet

35829169  
2 Way Male 0.5 Unsealed Blue



Next Steps



Keep pace with where mobility is going.

See what's next and get the latest updates.

SIGN UP TO GET UPDATES



Don't worry. We won't flood your inbox or share your email.

INSIGHTS

EXPLORE ALL ARTICLES  
CASE STUDIES  
MOBILITY INSIDER  
RESEARCH PUBLICATIONS  
WHITE PAPERS

SOLUTIONS

Advanced Safety  
Connected Services  
Connection Systems  
Connectivity and Security  
Electrical Distribution Systems  
Middleware & DevOps  
Smart Vehicle Architecture  
User Experience  
Vehicle Electrification Systems  
HellermannTyton  
Intercable Automotive Solutions  
Motional  
Winchester Interconnect  
Wind River

CATALOG

ABOUT

Our Mission  
Our Businesses  
Our Locations  
Our Foundation  
Sustainability  
Suppliers

PRIVACY

Terms of Use  
Cookie Policy

LEGAL & COMPLIANCE

CAREERS

INVESTORS  
NEWSROOM  
CONTACT