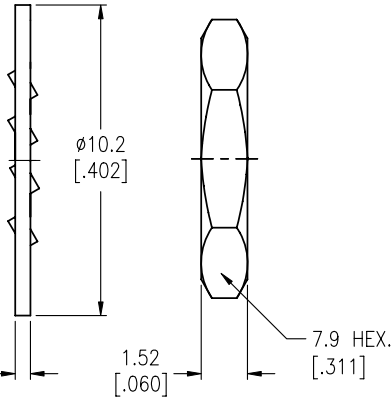
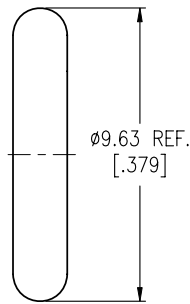
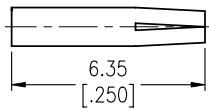
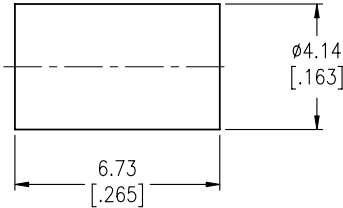
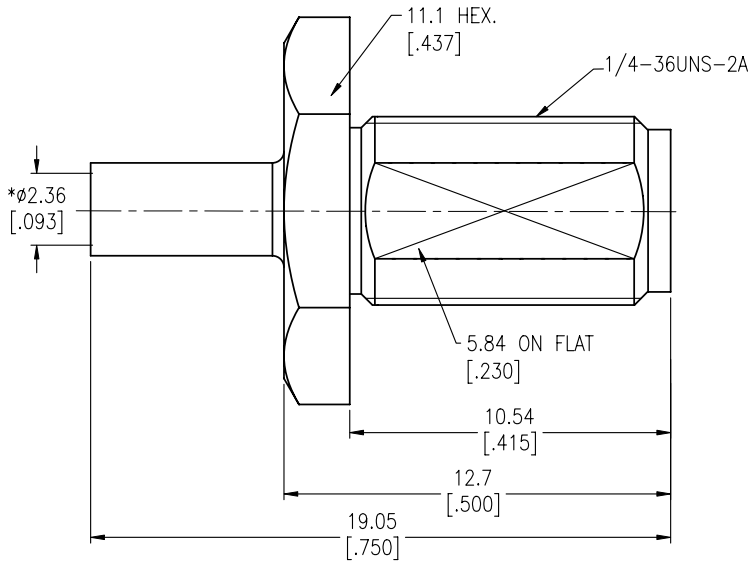
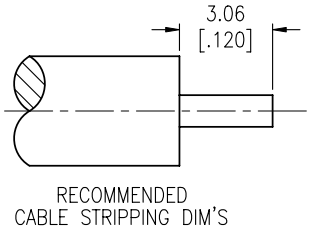
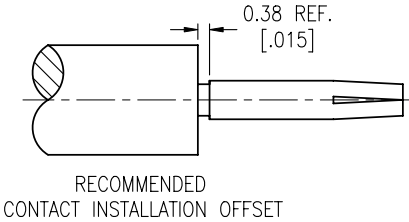
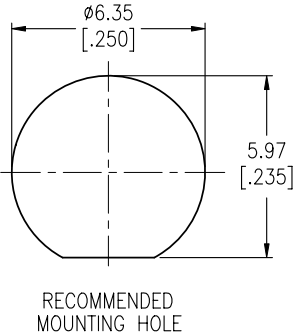


- NOTES:
- MATERIALS AND FINISHES(PLATING THICKNESS IN MICRO-INCHES):
BODY – STAINLESS STEEL, GOLD PLATING
CONTACT PIN – BERYLLIUM COPPER, GOLD PLATING
INSULATOR – PTFE, NATURAL
 - ELECTRICAL:
A. IMPEDANCE: 50 OHM
B. FREQUENCY RANGE: DC 0–12.4 GHz
C. VSWR(RETURN LOSS): 1.3 (17.692 dB), MAX.
D. DIELECTRIC WITHSTANDING VOLTAGE: 750 VRMS, MIN.
 - MECHANICAL:
A. DURABILITY: 500 CYCLES MIN.
B. TEMPERATURE RANGE: – 65°C to +165°C
MAX. PANEL THICKNESS = 2.36 mm
CONTACT PIN TO SOLDER
 - ASTERISK(*) INDICATES CABLE ENTER DIM'S OF METAL PARTS ONLY.
 - CUSTOMER NOTE: SOLDER BODY AND CONTACT TO CABLE
 - FOR CABLE STRIPPING AND CONNECTOR ASSEMBLY INSTRUCTION SEE AMPHENOL SPEC. 349–50180



CUSTOMER OUTLINE DRAWING

ALL OTHER SHEETS ARE FOR INTERNAL USE ONLY

UNLESS OTHERWISE SPECIFIED, DIMENSIONS ARE IN METRIC AND TOLERANCES ARE: 0.5 – 6mm ±0.1mm 6 – 30mm ±0.2mm 30 – 120mm ± 0.3mm ANGLES ±1°	MATERIAL	DRAWN	DATE	TITLE SMA CONNECTOR SOLDER TYPE JACK BULKHEAD MOUNT FOR .085 CUJAK CABLE			Amphenol RF	
		F.WANG	11-Sep-12				Danbury CT USA, Tainan Taiwan, Shenzhen China www.amphenolrf.com	
NOTICE – These drawings, specifications, or other data (1) are, and remain the property of Amphenol Corp. (2) must be returned upon request; and (3) are confidential and not to be disclosed to any person other than those to whom they are given by Amphenol Corp. The furnishing of these drawings, specifications, or other data by Amphenol Corp., or to any other person to anyone for any purpose is not to be regarded by implication or otherwise in any manner licensing, granting rights or permitting such holder or any other person to manufacture, use or sell any product, process or design, patented or otherwise, that may in any way be related to or disclosed by said drawings, specifications, or other data.	REFERENCE	ENGINEER	DATE	SCALE: 4/1			DRAWING NO. 901-9210-2	
		F.WANG	15-Jun-06					
		APPROVED	DATE					
	FINISH	S.HSIEH	15-Jun-06	SHEET 2 OF 2			ITEM NO. 901-9210-2	
		CAD FILE		DWG SIZE B			PART NO. 901-9210-2	
		F:\DWG\CNPD\901\9210-2-HSZ		CODE ID 74868		REV H		