

High Frequency Test Probe - Impedance 50 Ohm - up to 6 GHz

## HIGHLIGHTS

For high frequency measurements

Compact design

Also screwable type available

Inner conductor and outer tip are independently of each other and interchangeable

## MECHANICAL DATA - Inner Conductor

Full travel 3.70 mm

Working travel 2.00 mm

Pre-loaded spring force 0.65/ 0.95 N

Spring force at working travel 1.30/ 2.00 N

## MECHANICAL DATA - Outer Conductor

Full travel 5.00 mm

Working travel 4.00 mm

Pre-loaded spring force 1.50/3.00/4.00 N

Spring force at working travel 4.00/6.00/8.00 N

## TOTAL SPRING FORCE

Total spring force by working travel 5.30/ 6.00/ 7.30/ 8.00/ 9.30/ 10.00 N

## ELECTRICAL DATA - Inner Conductor

Impedance 50 Ohm

Frequency range up to 6 GHz

## TEST APPLICATION

Device under test (DUT) SMB-f

Gender female / socket

## MATERIALS

Barrel Brass, gold-plated

Spring Steel, gold-plated

Plunger CuBe, gold-plated

## AVAILABLE SCREW TOOLS

Article Designation max. Tip Diameter

WFS 7860/G-8.0 8.0

## CABLE DATA

Type Multiflex 86

Length 750 mm

Connection test probe MCX

Connection testing technology SMA

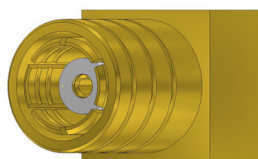


**PTR HARTMANN**

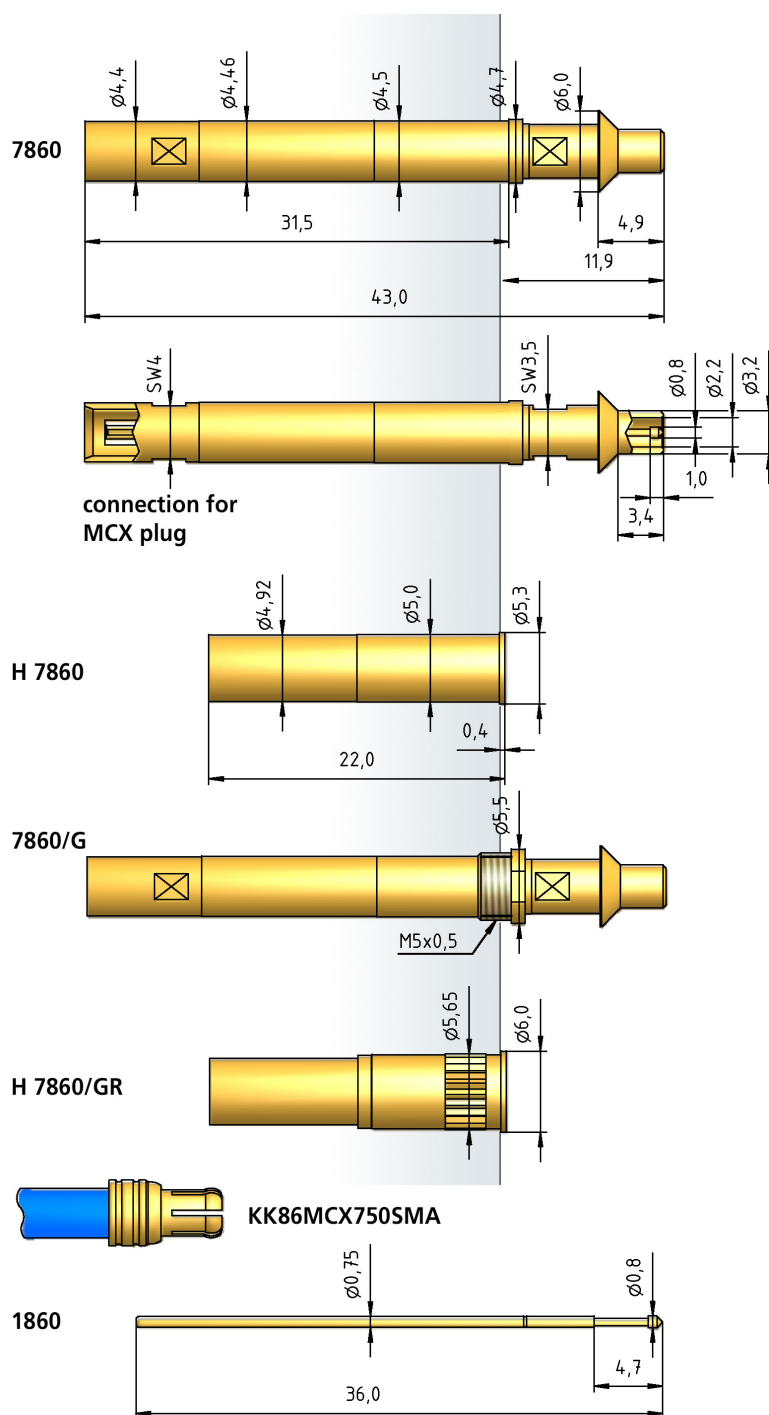
A Phoenix Mecano Company

## TECHNICAL DATA // Series 7860 • 7860/G

High Frequency Test Probe - Impedance 50 Ohm - up to 6 GHz



**SMB-f**





**PTR HARTMANN**

A Phoenix Mecano Company

## TECHNICAL DATA // Series 7860 • 7860/G

High Frequency Test Probe - Impedance 50 Ohm - up to 6 GHz

### HOW TO ORDER - Inner Conductor

1860	-	E	-	1.3 N	-	Au	-	0.8	C
1	2	3	4	5	6				

1. Series 2. Tip Style 3. Spring Force  
4. Tip Plating 5. Tip Diameter 6. Tip Material (only for CuBe)

### HOW TO ORDER - Complete Test Probe

7860/	G	-	Z8	E	-	5.3 N	-	Au	-	3.20/	0.8	C
1	2	3	4	5	6	7	8	9				

1. Series 2. Variant Threaded Design 3. Outer Conductor Tip  
4. Inner Conductor Tip 5. Total Spring Force  
6. Tip Plating 7. Outer Tip Diameter 8. Inner Tip Diameter  
9. Tip Material (only for CuBe)