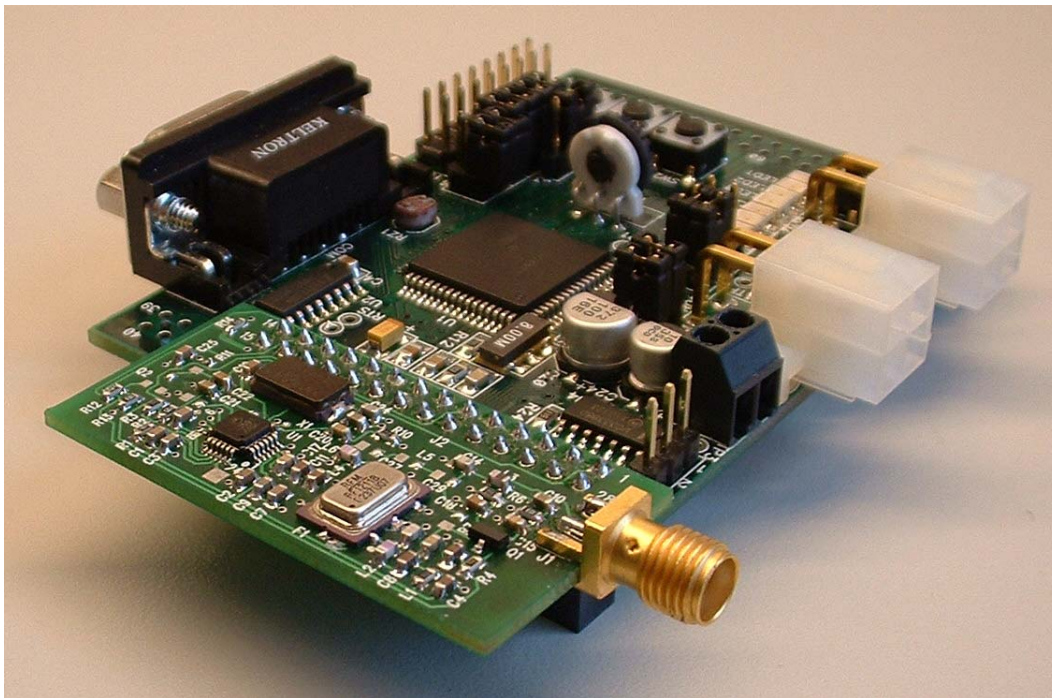


# A Receiver Using Romeo2

## Step-by-step Design for ISM Bands

by: **Laurent Gauthier**  
Access and Remote Control  
Toulouse, France



## Introduction

This document provides a step-by-step approach to designing an optimized receiver using Romeo2<sup>1</sup>.

Even though the description is based on a 433.92 MHz design, bills of material are provided for almost any ISM band: 315 MHz, 433.92 MHz, 868.3 MHz, and 916.5 MHz.

## Romeo2 Presentation

### Main Features

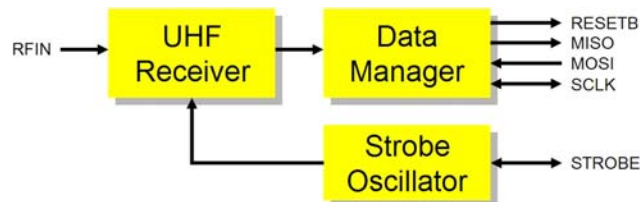
Romeo2 is a highly integrated UHF super heterodyne<sup>2</sup> receiver designed for data transfer application. Its local oscillator is a PLL clocked by a crystal oscillator.

Some specific features are:

- A data manager, able to detect a programmable word in a Manchester coded RF frame and to transmit the demodulated signal on the SPI port
- A strobe oscillator, to do a RUN/SLEEP cycle without the help of the MCU, for lower system power consumption
- Dual modulation type capability; Romeo2 can switch from ASK to FSK in software.
- LQFP24 package

Romeo2 is controlled through several pins:

- SCLK, MOSI, MISO, RESETB: signal for the SPI port
- STROBE: connection to the external R and C that define the oscillation frequency. Also allows Romeo2 to be driven by the MCU
- RFIN: RF signal input



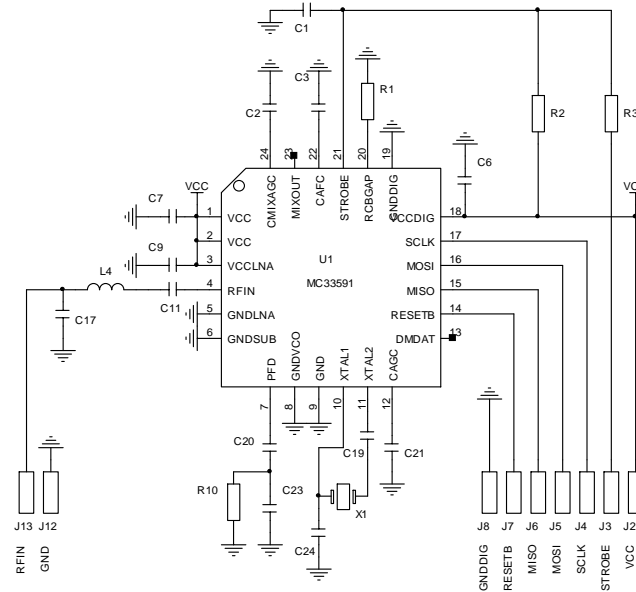
**Figure 1. Romeo2**

1. Romeo2 is the codename for MC33591FTA. For more technical data, refer to the MC33591FTA specification available on the Freescale Semiconductor web site at <http://www.freescale.com>.

2. A super heterodyne receiver converts the RF signal to an IF signal by mixing it with a local signal produced by an oscillator. The IF signal is usually at a low frequency, which simplifies filtering and amplification.

## Typical Application

A simple RF receiver can be realized with few external components.



**Figure 2. A Typical Application**

U1 is Romeo2. The external crystal X1 defines the operating frequency of the internal PLL. The loop filter of the PLL is comprised of C20, C23, and R10.

The internal AGC<sup>1</sup> requires an external capacitor C2 to set its time constant.

C3 is required for AFC<sup>2</sup>, to adjust the center frequency of the internal IF<sup>3</sup> amplifier.

C1 and R2 define the frequency of the strobe oscillator that sets the ON-OFF cycling of the receiver.

R3 allows the MCU to drive the state of the receiver directly.

C21 is used in OOK for the IF amplifier AGC. In the case of FSK, this capacitor is used as an internal low pass filter.

C17, L4 and C11 form a matching network to match the RFIN impedance of Romeo2 to the impedance of the antenna connected to J13.

R1 is used to set internal biasing.

1. Automatic Gain Control. This increases the dynamic range of the receiver (the difference between the smallest and the largest signal the receiver can process).
2. Automatic Frequency Control. A system that uses a reference signal to adjust the frequency of a filter or receiver.
3. Intermediate Frequency amplifier in a super heterodyne receiver.

### A Receiver Using Romeo2, Rev. 0

## RF Module Specifications

A microcontroller is used to control RESETB, MISO, MOSI, and SCLK (and STROBE if necessary).

Romeo2 internal registers can then be programmed to adjust various parameters:

- Frequency of operation
- Strobe oscillator operation
- Data Manager operation (data rate and frame content, for example)
- Mixer Gain

This simple design has the following advantages.

- Cost effective
- Compact
- High sensitivity
- Low consumption, due to the strobe oscillator
- Low MCU overhead, due to Data Manager

However, it does have the following drawbacks.

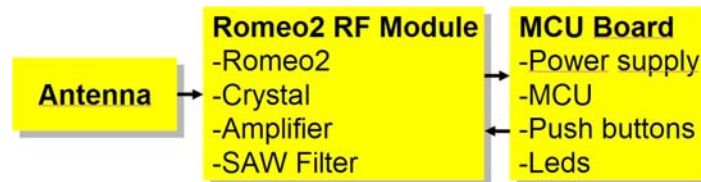
- Poor EMC performance in noisy environments with high level RF interference due to low filtering effect between antenna and RFIN
- C21 is shared in OOK and FSK; for dual operation mode and various data rates, the value of C21 is a compromise

The proposed design should not suffer these drawbacks and should maintain a high sensitivity.

## RF Module Specifications

### Overview

The Romeo2 RF Module is a part of a project to make a receiver for long-range remote control<sup>1</sup>.



**Figure 3. Receiver Using the Romeo2 RF Module**

1. The range is more than one mile outdoors. Specifications are compatible with ETSI regulations.

The receiver is composed of three parts:

- An MCU board
- A Romeo2 RF Module with all RF components, reusable for other design
- An antenna

### Specifications

- Sensitivity higher than -108dBm at 1200bps (Manchester coding)
- High out of band rejection, higher than 60dB at 1 MHz
- Narrow baseband bandwidth to improve Signal/Noise ratio
- Input matched to 50  $\Omega$
- 100% ASK demodulation (OOK)
- 100kHz deviation FSK demodulation
- 5V power supply
- Low current

This lead to the following definition of Romeo2 RF Module 433 MHz:

- Romeo2 circuit with dedicated crystal
- Surface Acoustic Wave Filter (SAW filter)
- Low noise amplifier (LNA) using an external transistor

---

## Romeo2 RF Module

### Schematic

The Romeo2 RF Module is composed of three blocks.

From the antenna to the MCU, we can find:

- An LNA with Q1 and surrounding components
- A SAW filter F1
- Romeo2

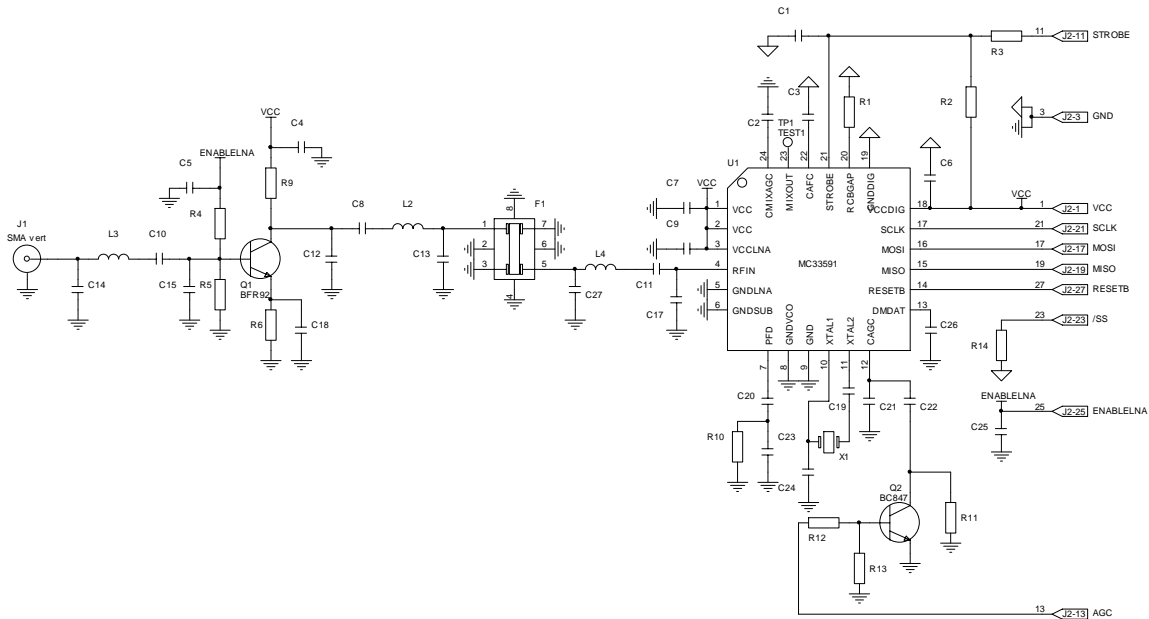
Some options on the board allow various configurations to be tested:

- Romeo2 alone
- Romeo2 and SAW filter
- Romeo2, SAW filter and LNA

The LNA could be placed between Romeo2 and the SAW filter. This would offer lower sensitivity but but higher resistance to interference. Because the goal of the project is to increase the range of the system

## Romeo2 RF Module

with a reasonable resistance to interference, the LNA is placed at the input of the receiver, to minimize the overall noise and maximize the sensitivity.



**Figure 4. Initial Schematic Diagram**

Around Romeo2, the typical application undergoes some minor changes.

The C21 capacitor can be paralleled with C22 switched by Q2 to adapt for different data rates or demodulation modes. R11 pre-charges C22 to avoid current spikes, which would increase the settling time.

C26 adds some low-pass filtering to reduce the bandwidth of the demodulated signal. C26 is removed for high data rate operation.

Some precautions are taken with the ground connections, to ensure that digital noise does not reduce the sensitivity. There are different grounds for the digital and analog parts of Romeo2. Both are connected to the ground of the motherboard via two different pins GNDANA and GNDDIG.

The LNA uses a BFR92. R4 and R5 set the base voltage and R6 fixes the current. L1 allows the RF signal to be present on the collector, while maximizing the collector DC voltage to increase linearity.

The LNA can be powered down by the MCU with the ENABLERNA pin, when Romeo2 is in sleep mode.

C14, L3, C10 and C15 provide a matching network between the antenna and the LNA.

Similarly, C12, C8, L2 and C13 match the LNA with the SAW F1 while C27, L4, C11 and C17 match the SAW filter to Romeo2.

The SAW filter is an RF1172B from RFM<sup>1</sup>. This device is available for different frequencies<sup>2</sup> in the same package and are pin-to-pin compatible.

## Computation of Values and Optimization

### *Strobe Oscillator*

C1 and R2 fix the period of the strobe oscillator,  $T_{\text{strobe}}$ .

This time should be long enough for Romeo2 to receive an ID<sup>3</sup> during its wake up time. At a bit rate of 1200 bits per second, it takes 6.6 ms to receive the ID.

With  $C1 = 100\text{n}$  and  $R2 = 1\text{M}$ ,  $T_{\text{strobe}} = 12\text{ms}$ . This is large enough to allow Romeo2 to receive the ID and wake up.

### *Crystal*

To compute the frequency of X1, first select a valid divide ratio (n) for the internal clock, and the value of the bit CF<sup>4</sup>:

- Frf around 315 MHz:  $n = 8$  and  $CF = 0$
- Frf around 433.92 MHz:  $n = 11$  and  $CF = 1$

Then, compute the frequency of the crystal like this:  $F_{\text{ref}} = \text{Frf}/(32-0.66/(1.23*n))$

This gives  $X1 = 13.58\text{ MHz}$  for  $\text{Frf} = 433.92\text{ MHz}$

$C24 = 10\text{p}$  and  $C19 = 10\text{n}$ , as specified in the data sheet.

### *Around Romeo2*

Most values are taken from the data sheet.

The values of C6, C3, C7, and C9 are not critical, but these decoupling capacitors should be sited close to U1.

$R1 = 180\text{ k}\Omega$ , 1%

$C2 = 10\text{ nF}$  and  $C3 = 100\text{ pF}$ , as in the data sheet.

The loop filter is also the same as the data sheet:  $C20 = 4.7\text{ nF}$ ,  $C23 = 390\text{ pF}$ ,  $R10 = 1\text{ k}\Omega$ .

To drive Q2,  $R12 = 47\text{ k}\Omega$  and  $R13 = 10\text{ k}\Omega$  are suitable. The current in R12 is less than  $I_{R12} = (5-0.6)/47000 < 100\text{ }\mu\text{A}$ . It should be possible to reduce this current.

Initially, R11 is omitted.

- 
1. RFM is a registered trademark of RF Monolithics, Inc. ([www.RFM.com](http://www.RFM.com))
  2. Available frequencies are 315 MHz, 418 MHz, 433.92 MHz, 868.35 MHz, and 916.5 MHz.
  3. An ID is a 8 bit word, transmitted in the frame, that Romeo2 should detect before processing data. (See data sheet.)
  4. Refer to the data sheet for information on the Romeo2 internal registers.

## Romeo2 RF Module

Optimum low-pass filtering is achieved with  $C26 = 4.7 \text{ nF}$ ; this increases the sensitivity to about 1 dB for a 1.2 kbd data rate.

### Matching Romeo2 to the SAW Filter

A network analyzer was used to measure the parameters of the SAW filter on the final board (which is different from the one used by RFM).

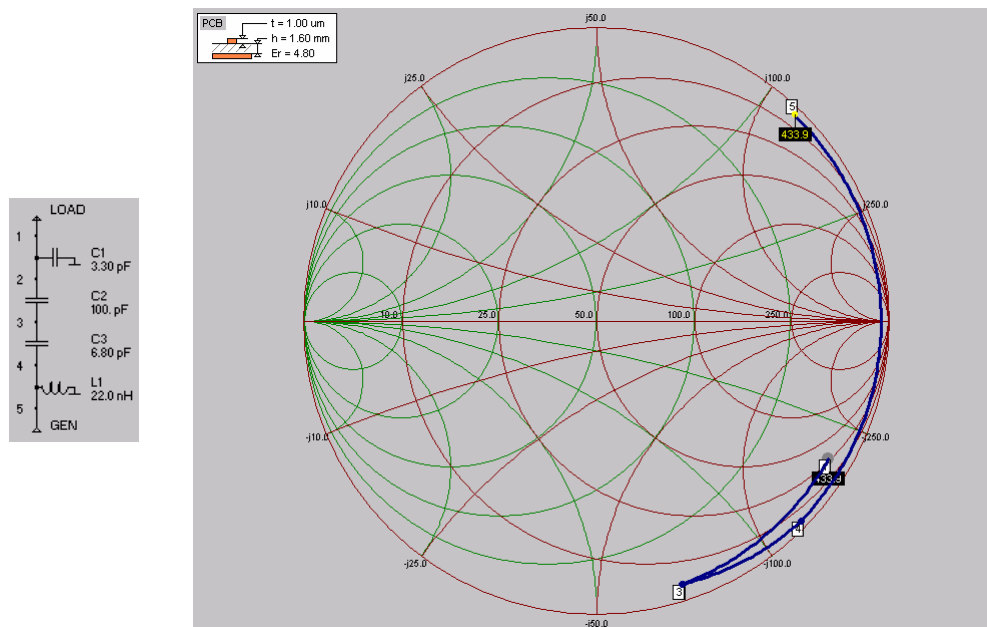
At 433.92 MHz, this gives:

- $S_{11\text{saw}} = 0.933 [-43.5^\circ]$
- $S_{21\text{saw}} = 0.0410 [43^\circ]$
- $S_{12\text{saw}} = 0.0356 [41.5^\circ]$
- $S_{22\text{saw}} = 0.964 [-50^\circ]$

Note that, because  $S_{12}$  and  $S_{21}$  are low, matching to  $S_{22}$  is a good approximation, which will simplify the design of the matching network.

For Romeo2, the input impedance is given in the data sheet:  $Z_{\text{romeo}} = 1.4\text{pF} \parallel 1100 \Omega$

A possible matching network is shown in [Figure 5](#) and described below. One coil and one capacitor are reversed, but the shapes of these two components are the same (0603), so this can be done.



**Figure 5. Matching Network and Simple Smith Chart**

This gives:

- $C17 = 3.3 \text{ pF}$



- C11 = 100 pF
- L4 = C16 = 6.8 pF
- C27 = L6 = 22 nH

With these values, the impedance reflected to the output of the SAW filter is  $Z^*_{\text{saw}} = 3.63 + j113.7$ . This is equivalent to a reflection coefficient of  $\Gamma = 0.977 [47.4^\circ]$ , which is close to the conjugate of  $S_{22\text{saw}}$ .

To optimize this matching network, the HF generator is connected to the input of the SAW, and the various elements are adjusted to maximize the sensitivity.

This gives:

- C17 = 3.9 pF
- C11 = 100 pF
- L4 = C16 = 8.2 pF
- C27 = L6 = 15 nH

### *LNA polarization*

To reduce the current consumption, 1 mA is a maximum limit for the collector current of Q1. To reduce the variation of this current with temperature, it is recommended to use an emitter feedback bias network<sup>1</sup>.

Let us make the following assumptions:

- $V_{cc} = 5V$
- $I_c = 1mA$
- $V_{be} = 0.7V$
- $V_{R6} = 1V$
- $Q1 = 100$
- $I_{R5} = 100\mu A$

We then find:

- $R6 = V_{R6}/I_c = 1k$
- $V_{R5} = V_{R6} + V_{be}$
- $R5 = V_{R5}/I_{R5} = 17000 \Omega s$
- $R4 = (V_{cc} - V_{R5}) / (I_{R5} + I_c / \beta) = 16500 \Omega s$

So  $R5 = 18k$  and  $R4 = 15k$ .

Some adjustments were made on the final design to have precisely 1 mA at 25°C. Those changes are:

- $R6 = 1k$
- $R5 = 10k$
- $R4 = 15k$

1. A very useful (and free) tool to compute current variations with temperature and transistor parameters is AppCad from Agilent Technologies. [www.agilent.com](http://www.agilent.com)

*LNA S-parameters*

The data sheet of the BFR92 gives no S-parameter for the chosen polarization. We then need to make some measurements on the LNA to match it.

With the network analyzer, we found, at 433.92 MHz:

- $S_{11lna} = 0.845 [-70^\circ]$
- $S_{21lna} = 3.49 [131^\circ]$
- $S_{12lna} = 0.154 [66^\circ]$
- $S_{22lna} = 0.871 [-21.2^\circ]$

It seems easy now to make a matching network; however, the analysis of  $S_{11lna}$  was done with a large span, and it has been discovered that  $S_{11lna}$  was greater than unity for frequencies above 200 MHz, which means a negative resistance or a potential instability<sup>1</sup>.

Some changes have been done on the LNA to make it unconditionally stable. L1 was replaced by a resistor R9, and C18 was increased to 10 nF. With  $R9 = 1 \text{ k}\Omega$ , VCE is reduced to 3V but this does not lead to a change in current, and R4, R5 and R6 do not require to be modified.

The measured LNA parameters are shown in [Table 1](#).

**Table 1. Measured LNA Parameters**

| F (MHz) | S11 mod | arg    | S21 mod | arg    | S12 mod | arg    | S22 mod | arg    |
|---------|---------|--------|---------|--------|---------|--------|---------|--------|
| 0.3     | 0.979   | -10.4  | 0.761   | -54.8  | 0.015   | -82    | 0.960   | -2.72  |
| 1       | 0.979   | -1.1   | 0.739   | -113   | 0.011   | -74    | 0.958   | -2.66  |
| 10      | 0.950   | -2.33  | 3.53    | -173   | 0.0026  | 72     | 0.920   | -2.04  |
| 100     | 0.907   | -18.3  | 3.50    | 157.3  | 0.026   | 76     | 0.890   | -9.44  |
| 200     | 0.829   | -35    | 3.457   | 133.5  | 0.05    | 62     | 0.850   | -18.5  |
| 315     | 0.710   | -51.9  | 3.19    | 103.8  | 0.074   | 43.5   | 0.789   | -26.9  |
| 418     | 0.605   | -63.5  | 2.79    | 82.9   | 0.077   | 33.3   | 0.746   | -32.68 |
| 434     | 0.600   | -65.52 | 2.681   | 81.14  | 0.087   | 32.2   | 0.748   | -33.9  |
| 600     | 0.458   | -80.8  | 2.288   | 50.58  | 0.107   | 16.2   | 0.686   | -42.55 |
| 700     | 0.395   | -88.6  | 2.121   | 35.27  | 0.123   | 9.22   | 0.658   | -48.03 |
| 868     | 0.293   | -100.9 | 1.911   | 7.58   | 0.150   | -5.2   | 0.607   | -56.64 |
| 1000    | 0.248   | -108.4 | 1.708   | -8.57  | 0.167   | -11.5  | 0.592   | -65.43 |
| 1500    | 0.0548  | -157.5 | 1.353   | -77.7  | 0.281   | -57.1  | 0.460   | -100   |
| 2000    | 0.148   | 23.1   | 1.157   | -143.2 | 0.448   | -112.3 | 0.379   | -156.8 |

1. For an active element, the S-parameters should always be verified in a larger frequency span than the band of interest. An oscillation in the LNA can reduce the sensitivity or lead to bad EMC performances.

**Table 1. Measured LNA Parameters (Continued)**

| F (MHz) | S11 mod | arg   | S21 mod | arg   | S12 mod | arg   | S22 mod | arg   |
|---------|---------|-------|---------|-------|---------|-------|---------|-------|
| 2500    | 0.323   | -24.2 | 0.887   | 156.2 | 0.541   | -175  | 0.330   | 124.7 |
| 3000    | 0.452   | -64.2 | 0.780   | 104.6 | 0.615   | 123.6 | 0.320   | 54    |

So, at 433.92 MHz:

- S11lna = 0.6 [-65.52°]
- S21lna = 2.681 [81.14°]
- S12lna = 0.087 [32.2°]
- S22lna = 0.748 [-33.9°]

The gain of the LNA is slightly reduced (S21lna is lower), but the isolation is increased (S12lna is lower too), thus increasing the stability.

#### *Matching the SAW to the LNA*

A Touchstone file has been made with the S-parameters of the LNA. This allows the impedance and gain of the system to be computed.

The load is the SAW with saw = 0.933 [-43.5°].

The matching network is adjusted in the software to provide maximum gain of the system. In this configuration, the computed gain is about 10 dB with the input of the LNA not yet matched.

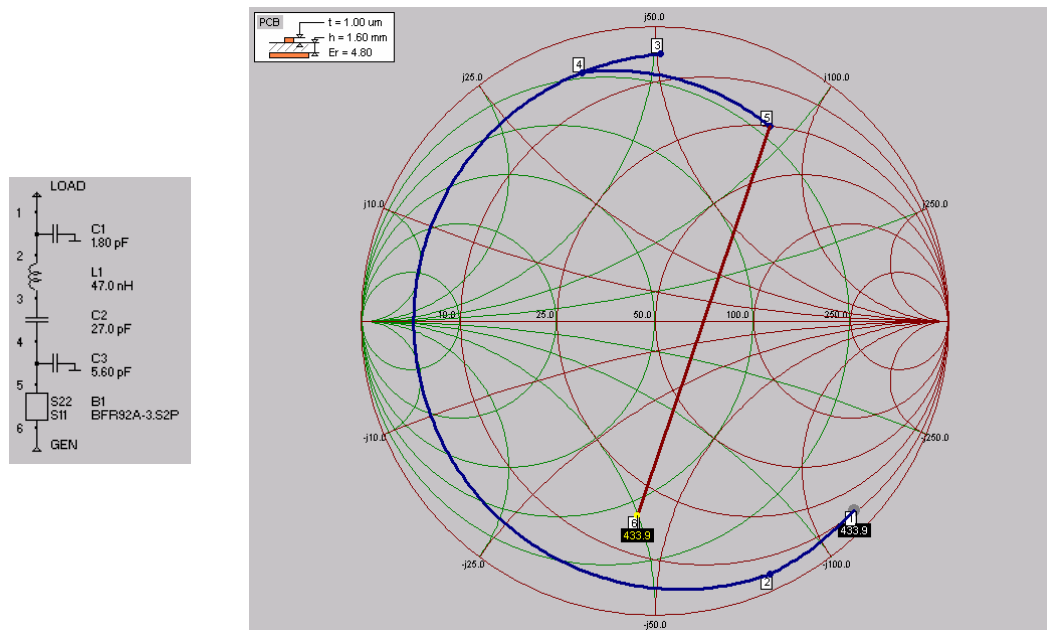


Figure 6. Matching the SAW to the LNA

This gives:

- C13 = 1.8 pF
- L2 = 47 nH
- C8 = 27 pF
- C12 = 5.6 pF

To optimize this matching network, the HF generator is connected to the input of the LNA, and the various elements are adjusted to increase the sensitivity<sup>1</sup>.

This gives:

- C13 = 1.8 pF
- L2 = 47 nH
- C8 = 27 pF
- C12 = 3.3 pF

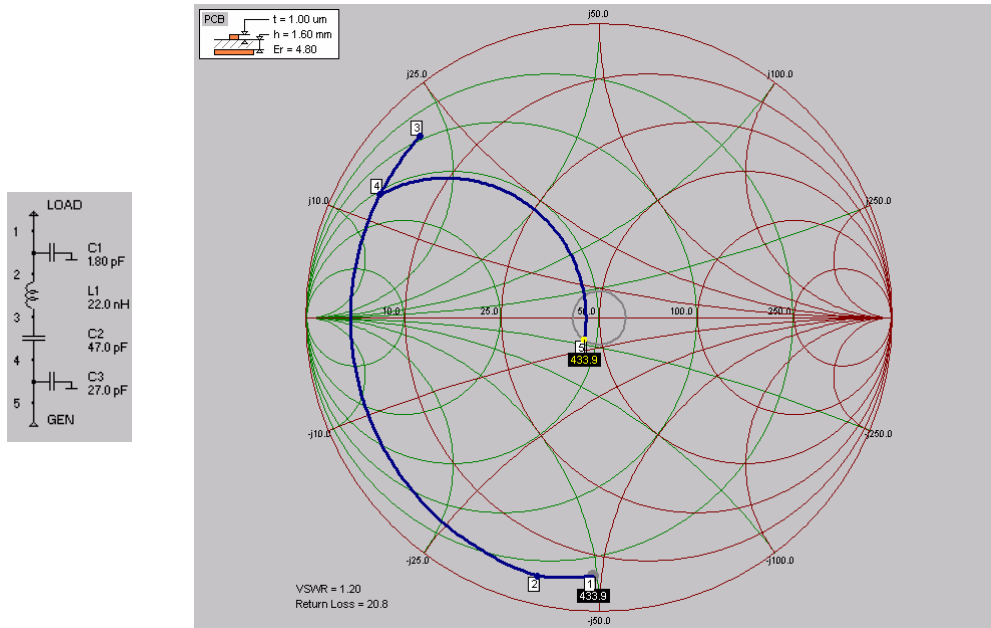
Once matched to the SAW, the input impedance of the LNA is  $Z_{inLNA} = 6.2 - j48.4$

1. This approach neglects the impedance change during optimization at the input of the LNA. But some simulations showed that this lead to a minor error.

### Matching the LNA to 50

A rule of thumb to match the input of a LNA correctly, to achieve maximum sensitivity of the system, is first to do a normal matching network and then to adjust it. The optimum is normally not the power matching but the minimum noise matching. This matching is most often slightly different.

This network matches the LNA to 50 with a reasonable mismatch (VSWR = 1.2), which is equivalent to a loss of 0.036 dB.



**Figure 7. Matching the LNA to 50**

This gives:

- C15 = 1.8 pF
- C10 = 47 pF
- L3 = 22 nH
- C14 = 22 pF

The optimization process showed that the sensitivity was not much affected by those components.

Maximum sensitivity was achieved with:

- C15 = 1.8 pF
- C10 = 100pF
- L3 = 33 nH
- C14 = nc

## Romeo2 RF Module

### Final Schematic

The final schematic is the result of the optimization process.

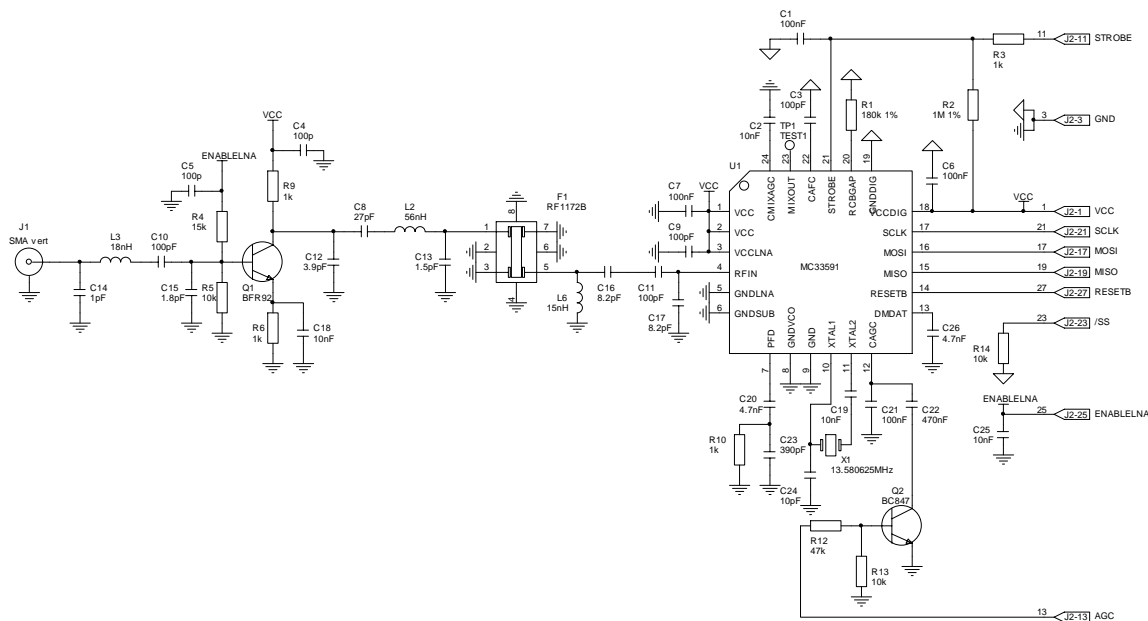


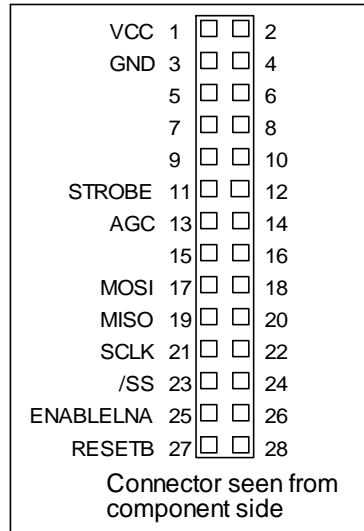
Figure 8. Final Optimized Schematic Diagram

### How to use the Romeo2 RF Module

All the logic level signals available on J1 are referred to VCC and GND.

#### NOTE

*Do not apply any signal higher than VCC or lower than GND to the module.*


**Figure 9. Connector J1 Connections**
**Table 2. Connector J1 Pin Assignments and Functions**

| Number | Name      | Type         | Function  |
|--------|-----------|--------------|---|
| 1      | VCC       | Power supply | 5V for Romeo2 and LNA.  |
| 3      | GND       | Power supply | To be connected to a large ground plane   |
| 11     | STROBE    | Input        | Strobe oscillator control<br>0 = strobe oscillator is stopped<br>1 = strobe oscillator is stopped and Romeo2 is wake up<br>highZ = strobe oscillator is running |
| 13     | AGC       | Input        | AGC speed control/FSK demodulator settling time<br>0 = FSK at 1.2kbps<br>1 = OOK at 1.2kbps   |
| 17     | MOSI      | Input/Output | Serial data for the SPI port  |
| 19     | MISO      | Output       | Serial data for the SPI port  |
| 21     | SCLK      | Input/Output | Serial clock for the SPI port   |
| 25     | ENABLELNA | Input        | LNA bias control<br>0 = LNA is OFF.<br>1 = LNA is ON. Normal mode during reception  |
| 27     | RESETB    | Input        | Configuration mode/Normal mode control for the SPI port   |

### Software and MCU Board

Refer to AN2707 for more information concerning software drivers for this Romeo2 RF Module.

## Measurements

### Supply Current

Supply current is measured in various configurations at  $V_{cc} = 5V$ .

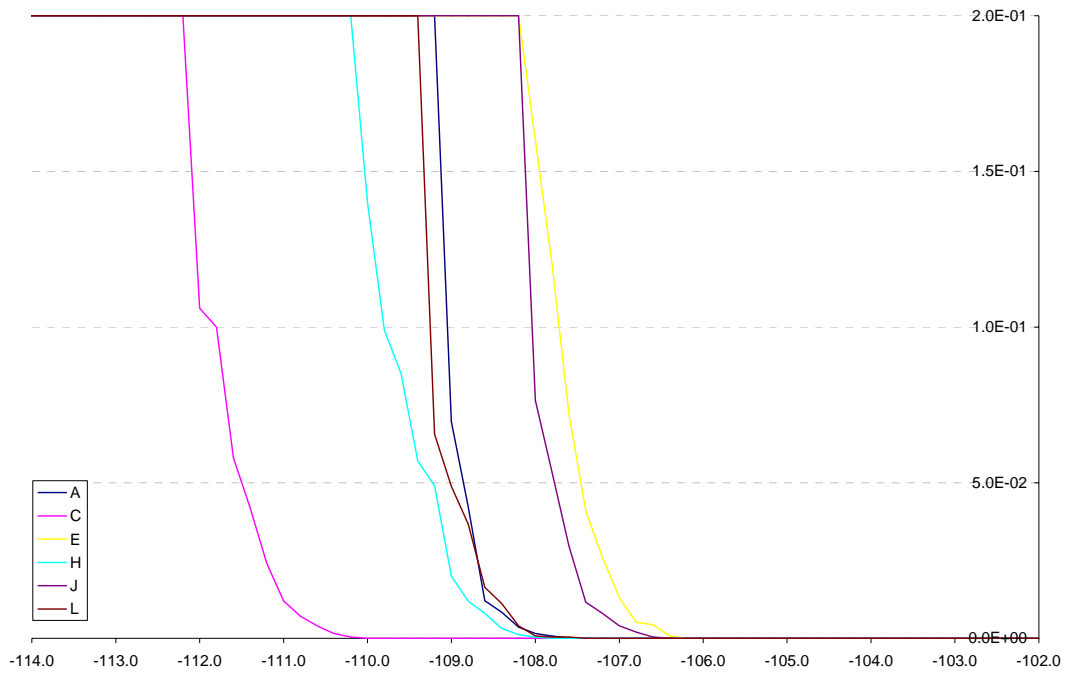
|                     | Ref : 1110 | 1111    | 1120      | 1121      | 1131     | 1141     |
|---------------------|------------|---------|-----------|-----------|----------|----------|
| LNA+SAW :           | yes        | no      | yes       | no        | no       | no       |
| Frequency :         | 315MHz     | 315MHz  | 433.92MHz | 433.92MHz | 868.3MHz | 916.5MHz |
| Romeo2 ref :        | MC33591    | MC33591 | MC33591   | MC33591   | MC33593  | MC33593  |
| Supply Current (mA) |            |         |           |           |          |          |
| Strobe=1 ENLNA=0    | 5.42       | xxxxx   | 5.65      | xxxxx     | xxxxx    | xxxxx    |
| Strobe=0 ENLNA=0    | 0.21       | xxxxx   | 0.21      | xxxxx     | xxxxx    | xxxxx    |
| Strobe=1 ENLNA=1    | 6.57       | 5.32    | 6.80      | 5.33      | 7.06     | 7.15     |
| Strobe=0 ENLNA=1    | 1.27       | 0.19    | 1.28      | 0.17      | 0.18     | 0.18     |

### OOK Sensitivity (BER Method)

A data analyzer is used to measure the BER at various RF signal levels. The RF signal is OOK modulated.

|                             | Ref : 1111                          | 1110    | 1121      | 1120      | 1131     | 1141     |
|-----------------------------|-------------------------------------|---------|-----------|-----------|----------|----------|
| LNA+SAW :                   | no                                  | yes     | no        | yes       | no       | no       |
| Frequency :                 | 315MHz                              | 315MHz  | 433.92MHz | 433.92MHz | 868.3MHz | 916.5MHz |
| Romeo2 ref :                | MC33591                             | MC33591 | MC33591   | MC33591   | MC33593  | MC33593  |
| Data rate :                 | 1.2kbps                             | 1.2kbps | 1.2kbps   | 1.2kbps   | 1.2kbps  | 1.2kbps  |
| Modulation :                | OOK                                 | OOK     | OOK       | OOK       | OOK      | OOK      |
| Cagc :                      | ON                                  | ON      | ON        | ON        | ON       | ON       |
| Data Analyzer Setup         |                                     |         |           |           |          |          |
| Data Rate :                 | 2400 bps NRZ or 1200 bps Manchester |         |           |           |          |          |
| Pattern :                   | 0101 0101 (NRZ)                     |         |           |           |          |          |
| Measurements over 2500 bits |                                     |         |           |           |          |          |
| Curve :                     | A                                   | C       | E         | H         | J        | L        |
| Sensitivity for 1e-2 BER :  | -108.6                              | -111.0  | -107.0    | -108.8    | -107.4   | -108.4   |





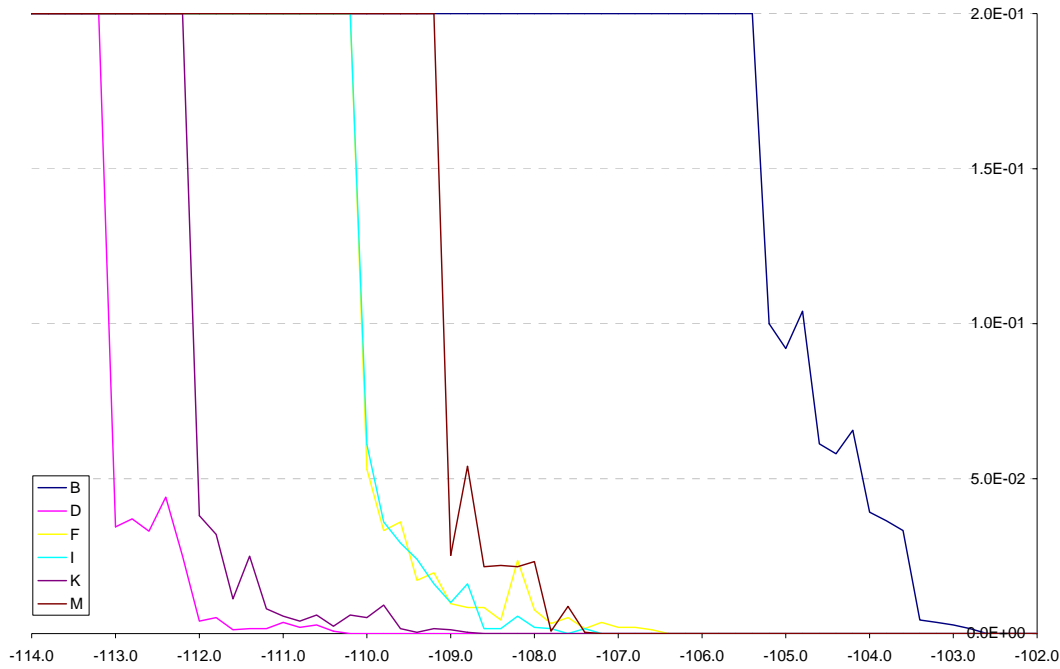
### FSK Sensitivity (BER Method)

A data analyzer is used to measure the BER at various RF signal levels. The RF signal is FSK modulated.

| Ref :        | 1111       | 1110       | 1121       | 1120       | 1131       | 1141       |
|--------------|------------|------------|------------|------------|------------|------------|
| LNA+SAW :    | no         | yes        | no         | yes        | no         | no         |
| Frequency :  | 315MHz     | 315MHz     | 433.92MHz  | 433.92MHz  | 868.3MHz   | 916.5MHz   |
| Romeo2 ref : | MC33591    | MC33591    | MC33591    | MC33591    | MC33593    | MC33593    |
| Data rate :  | 1.2kbps    | 1.2kbps    | 1.2kbps    | 1.2kbps    | 1.2kbps    | 1.2kbps    |
| Modulation : | FSK 100kHz | FSK 100kHz | FSK 100kHz | FSK 100kHz | FSK 100kHz | FSK 100kHz |
| Cagc :       | OFF        | OFF        | OFF        | OFF        | OFF        | OFF        |
| Cdmdat :     | yes        | yes        | yes        | yes        | yes        | yes        |

| Data Analyzer Setup         |                                     |
|-----------------------------|-------------------------------------|
| Data Rate :                 | 2400 bps NRZ or 1200 bps Manchester |
| Pattern :                   | 0101 0101 (NRZ)                     |
| Measurements over 2500 bits |                                     |

| Curve :                    | B      | D      | F      | I      | K      | M      |
|----------------------------|--------|--------|--------|--------|--------|--------|
| Sensitivity for 1E-2 BER : | -103.6 | -112.2 | -108.2 | -108.8 | -111.4 | -108.0 |



### OOK Sensitivity (Functional Method)

The sensitivity is measured using an RF generator modulated by a frame generator. Software decodes the frame and lights an LED if the frame is received correctly.

|                  | 1110    | 1111    | 1120      | 1121      | 1131     | 1141     |
|------------------|---------|---------|-----------|-----------|----------|----------|
| Ref :            | 1110    | 1111    | 1120      | 1121      | 1131     | 1141     |
| LNA+SAW :        | yes     | no      | yes       | no        | no       | no       |
| Frequency :      | 315MHz  | 315MHz  | 433.92MHz | 433.92MHz | 868.3MHz | 916.5MHz |
| Romeo2 ref :     | MC33591 | MC33591 | MC33591   | MC33591   | MC33593  | MC33593  |
| Data rate :      | 1.2kbps | 1.2kbps | 1.2kbps   | 1.2kbps   | 1.2kbps  | 1.2kbps  |
| Modulation :     | OOK     | OOK     | OOK       | OOK       | OOK      | OOK      |
| Cagc :           | ON      | ON      | ON        | ON        | ON       | ON       |
| Data Manager Off | -109.4  | -106    | -107.6    | -105.6    | -106.4   | -107.2   |
| Data Manager On  | -108.6  | -106    | -105.8    | -102.6    | -103.6   | -105.8   |

### FSK Sensitivity (Functional Method)

The sensitivity is measured using an RF generator modulated by a frame generator. A software decodes the frame and lights an LED if the frame is received correctly.

|                  |         |         |           |           |          |          |
|------------------|---------|---------|-----------|-----------|----------|----------|
| Ref :            | 1110    | 1111    | 1120      | 1121      | 1131     | 1141     |
| LNA+SAW :        | yes     | no      | yes       | no        | no       | no       |
| Frequency :      | 315MHz  | 315MHz  | 433.92MHz | 433.92MHz | 868.3MHz | 916.5MHz |
| Romeo2 ref :     | MC33591 | MC33591 | MC33591   | MC33591   | MC33593  | MC33593  |
| Data rate :      | 1.2kbps | 1.2kbps | 1.2kbps   | 1.2kbps   | 1.2kbps  | 1.2kbps  |
| Modulation :     | FSK     | FSK     | FSK       | FSK       | FSK      | FSK      |
| Cagec :          | OFF     | OFF     | OFF       | OFF       | OFF      | OFF      |
| Data Manager Off | -110.4  | -102    | -107.6    | -107.8    | -108     | -108.8   |
| Data Manager On  | -110    | -101.8  | -107.2    | -106.8    | -107     | -108     |

### Maximum Demodulated Signal (BER Method)

A data analyzer is used to measure the BER for high RF signal levels.

|              |         |         |           |           |          |          |
|--------------|---------|---------|-----------|-----------|----------|----------|
| Ref :        | 1110    | 1111    | 1120      | 1121      | 1131     | 1141     |
| LNA+SAW :    | yes     | no      | yes       | no        | no       | no       |
| Frequency :  | 315MHz  | 315MHz  | 433.92MHz | 433.92MHz | 868.3MHz | 916.5MHz |
| Romeo2 ref : | MC33591 | MC33591 | MC33591   | MC33591   | MC33593  | MC33593  |
| Data rate :  | 1.2kbps | 1.2kbps | 1.2kbps   | 1.2kbps   | 1.2kbps  | 1.2kbps  |
| Modulation : | OOK/FSK | OOK/FSK | OOK/FSK   | OOK/FSK   | OOK/FSK  | OOK/FSK  |
| Cagec :      | ON/OFF  | ON/OFF  | ON/OFF    | ON/OFF    | ON/OFF   | ON/OFF   |
| OOK          | ≥ 19dBm | ≥ 19dBm | ≥ 19dBm   | ≥ 19dBm   | ≥ 19dBm  | ≥ 19dBm  |
| FSK          | 10.6dBm | ≥ 19dBm | ≥ 19dBm   | ≥ 19dBm   | 0dBm     | ≥ 19dBm  |

### Maximum Demodulated Signal (Functional Method)

The maximum demodulated level is measured using an RF generator modulated by a frame generator. Software decodes the frame and lights an LED if the frame is received correctly.

|                  |         |         |           |           |          |          |
|------------------|---------|---------|-----------|-----------|----------|----------|
| Ref :            | 1110    | 1111    | 1120      | 1121      | 1131     | 1141     |
| LNA+SAW :        | yes     | no      | yes       | no        | no       | no       |
| Frequency :      | 315MHz  | 315MHz  | 433.92MHz | 433.92MHz | 868.3MHz | 916.5MHz |
| Romeo2 ref :     | MC33591 | MC33591 | MC33591   | MC33591   | MC33593  | MC33593  |
| Data rate :      | 1.2kbps | 1.2kbps | 1.2kbps   | 1.2kbps   | 1.2kbps  | 1.2kbps  |
| Modulation :     | OOK     | OOK     | OOK       | OOK       | OOK      | OOK      |
| Cagec :          | ON      | ON      | ON        | ON        | ON       | ON       |
| Data Manager Off | ≥ 19dBm | ≥ 19dBm | ≥ 19dBm   | ≥ 19dBm   | 13dBm    | 14dBm    |
| Data Manager On  | ≥ 19dBm | ≥ 19dBm | ≥ 19dBm   | ≥ 19dBm   | 12.2dBm  | 11.2dBm  |

|                  |         |         |           |           |          |          |
|------------------|---------|---------|-----------|-----------|----------|----------|
| Ref :            | 1110    | 1111    | 1120      | 1121      | 1131     | 1141     |
| LNA+SAW :        | yes     | no      | yes       | no        | no       | no       |
| Frequency :      | 315MHz  | 315MHz  | 433.92MHz | 433.92MHz | 868.3MHz | 916.5MHz |
| Romeo2 ref :     | MC33591 | MC33591 | MC33591   | MC33591   | MC33593  | MC33593  |
| Data rate :      | 1.2kbps | 1.2kbps | 1.2kbps   | 1.2kbps   | 1.2kbps  | 1.2kbps  |
| Modulation :     | FSK     | FSK     | FSK       | FSK       | FSK      | FSK      |
| Cagec :          | OFF     | OFF     | OFF       | OFF       | OFF      | OFF      |
| Data Manager Off | ≥ 19dBm | ≥ 19dBm | ≥ 19dBm   | ≥ 19dBm   | 9.8dBm   | 15.4dBm  |
| Data Manager On  | ≥ 19dBm | ≥ 19dBm | ≥ 19dBm   | ≥ 19dBm   | 8.4dBm   | 14.4dBm  |

### A Receiver Using Romeo2, Rev. 0

## Measurements

### Local Oscillator Leakage

A spectrum analyzer is connected to the RF connector. The level of the local oscillator is measured.

| Ref :        | 1110    | 1111    | 1120      | 1121      | 1131     | 1141     |
|--------------|---------|---------|-----------|-----------|----------|----------|
| LNA+SAW :    | yes     | no      | yes       | no        | no       | no       |
| Frequency :  | 315MHz  | 315MHz  | 433.92MHz | 433.92MHz | 868.3MHz | 916.5MHz |
| Romeo2 ref : | MC33591 | MC33591 | MC33591   | MC33591   | MC33593  | MC33593  |

| Spectrum Analyzer Setup |         |         |         |         |         |         |
|-------------------------|---------|---------|---------|---------|---------|---------|
| RBW (kHz) :             | 1       | 1       | 1       | 1       | 1       | 1       |
| Span (MHz) :            | 10      | 10      | 10      | 10      | 10      | 10      |
| Detector :              | Peak    | Peak    | Peak    | Peak    | Peak    | Peak    |
| Aquisition :            | Maxhold | Maxhold | Maxhold | Maxhold | Maxhold | Maxhold |
| Fc (MHz) :              | 315     | 315     | 433.92  | 433.92  | 868.3   | 916.5   |
| IF (kHz) :              | 660     | 660     | 660     | 660     | 660     | 660     |
| Fc+IF (MHz) :           | 315.66  | 315.66  | 434.58  | 434.58  | 868.96  | 917.16  |

|                  |       |        |       |        |        |        |
|------------------|-------|--------|-------|--------|--------|--------|
| LO Level (dBm) : | <-113 | -95.91 | <-113 | -96.37 | -86.94 | -84.99 |
|------------------|-------|--------|-------|--------|--------|--------|

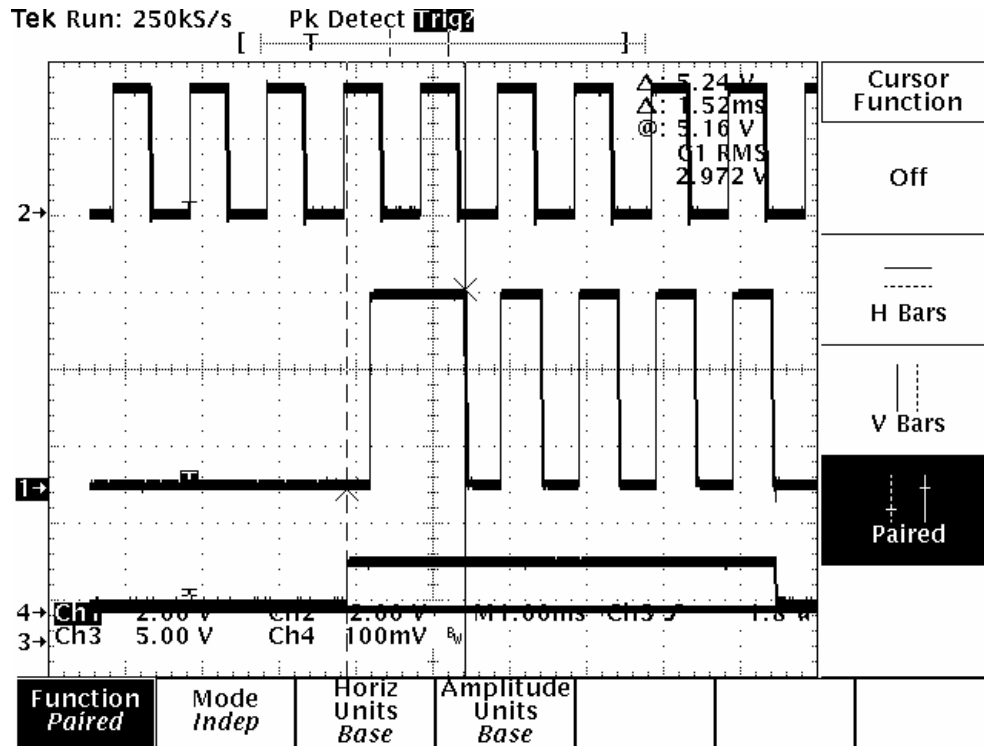
### OOK Wake Up Time

A modulated RF generator is connected to the RF input for various levels. The STROBE pin is connected to a square wave generator. The time between the positive edge on STROBE and the first pulses on MOSI is measured. This measurement is done for various values of Cagc.

|              |         |  |  |  |
|--------------|---------|--|--|--|
| Ref :        | 1110    |  |  |  |
| LNA+SAW :    | yes     |  |  |  |
| Frequency :  | 315MHz  |  |  |  |
| Romeo2 ref : | MC33591 |  |  |  |
| Data rate :  | 1.2kbps |  |  |  |
| Modulation : | OOK     |  |  |  |
| Cagc :       | ON/OFF  |  |  |  |

|                          | Wake up time (ms) |      |      |     |
|--------------------------|-------------------|------|------|-----|
| RFin Power Level (dBm) : | -100              | -90  | -80  | -60 |
| CAGC ON                  | 1.52              | 2.02 | 1.72 | 1.8 |
| CAGC OFF                 | 2.08              | 1.76 | 1.42 | 1.6 |

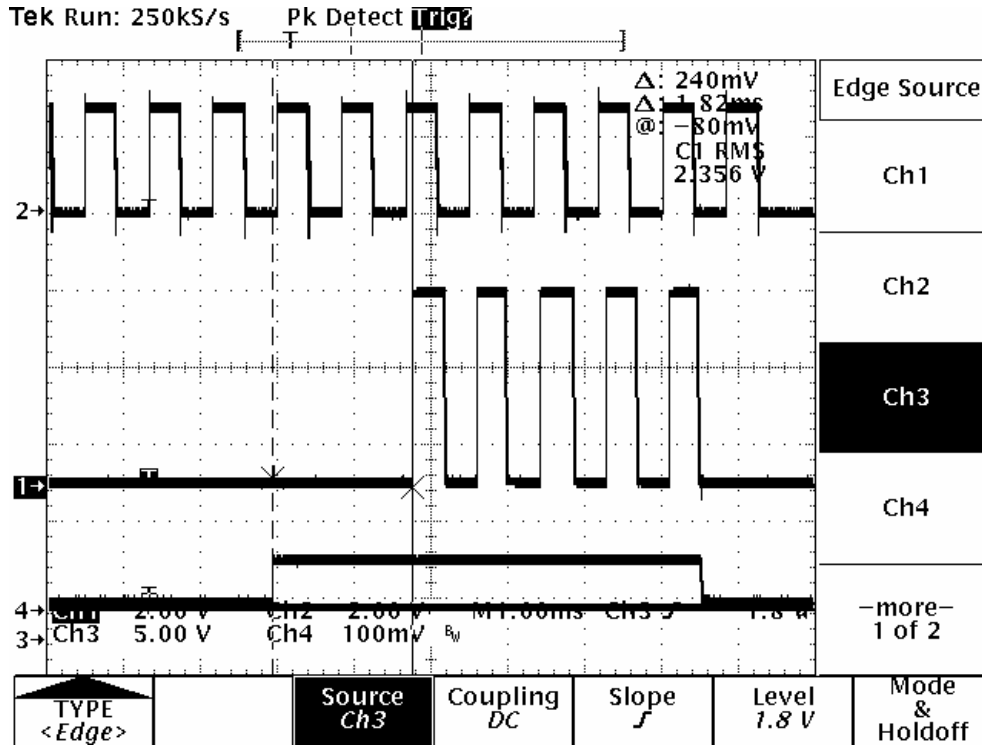


### FSK Wake Up Time

A modulated RF generator is connected to the RF input for various levels. The STROBE pin is connected to a square wave generator. The time between the positive edge on STROBE and the first pulses on MOSI is measured. This measurement is done for different values of Cagc.

Ref : 1110  
 LNA+SAW : yes  
 Frequency : 315MHz  
 Romeo2 ref : MC33591  
 Data rate : 1.2kbps  
 Modulation : FSK 50kHz  
 Cagc : ON/OFF

| RFin Power Level (dBm) : | -100 | -90   | -80   | -60  |
|--------------------------|------|-------|-------|------|
| CAGC ON                  | 14.6 | 13.44 | 14.36 | 13.8 |
| CAGC OFF                 | 1.82 | 1.4   | 2.18  | 2.58 |

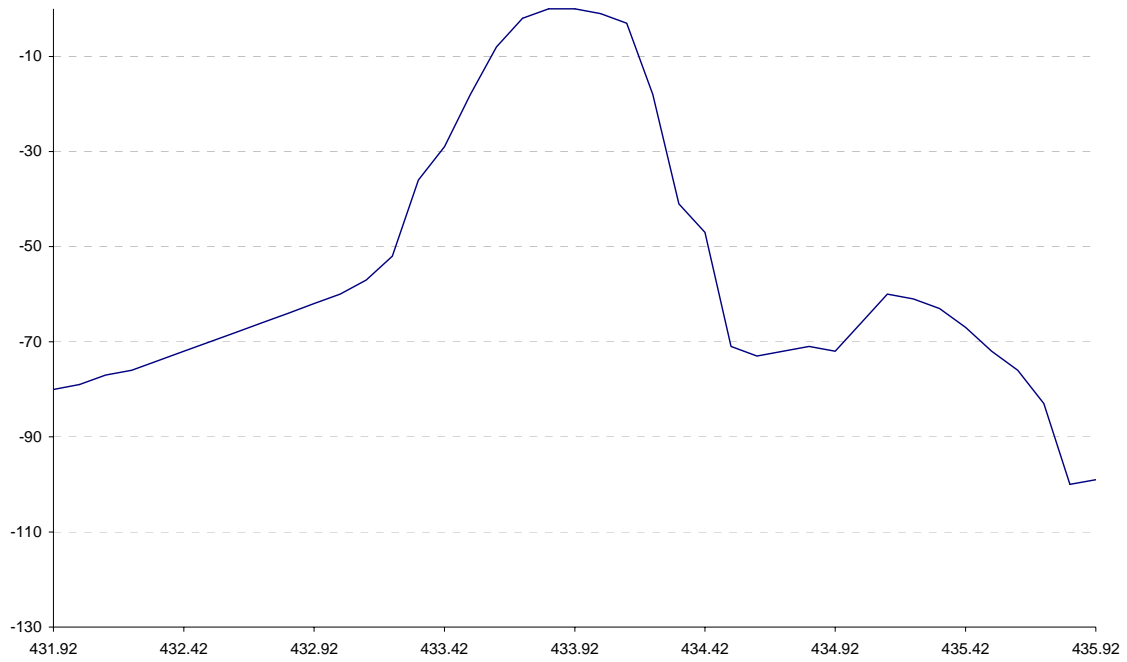


### Bandwidth

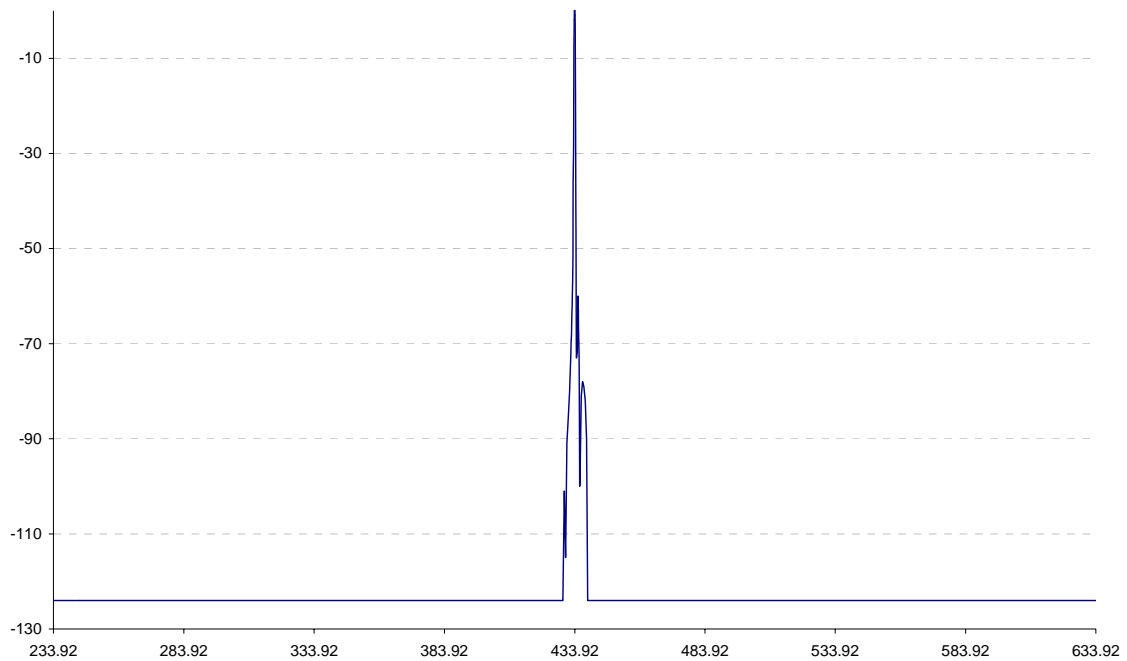
An RF generator is OOK modulated by a frame generator. The level of the RF generator is adjusted to measure the sensitivity of the receiver for various frequencies. The maximum sensitivity is defined as the 0 dB reference.

Ref : 1120  
 LNA+SAW : yes  
 Frequency : 433.92MHz  
 Romeo2 ref : MC33591  
 Data rate : 1.2kbps  
 Modulation : OOK  
 Cagc : ON  
 Dmdat : ON

2 MHz Span



200 MHz Span



A Receiver Using Romeo2, Rev. 0

## Measurements

### IP3, Blocking and Dynamic Range

A valid signal is applied to the RF input at a level 3dB above the sensitivity level. An interference signal 2 MHz or 10 MHz away is also applied to the RF input using a combiner. The level of the interference signal is increased as long as the demodulation of the valid signal is correct. This gives the blocking level.

For IP3 measurements, two RF generators are used with a combiner, the frequency offsets being -5 MHz and -10 MHz. These have the same level, but one is modulated by a frame generator. The level is increased up to the correct demodulation of the frame. The received signal (in fact, an interference created by the non-linearity of the receiver) has then a level equal to the sensitivity level. IP3 is computed from the sensitivity level and RF generator levels.

$$IP3 = (3 * SL - GL) / 3$$

Where SL = sensitivity level and GL = generator level.

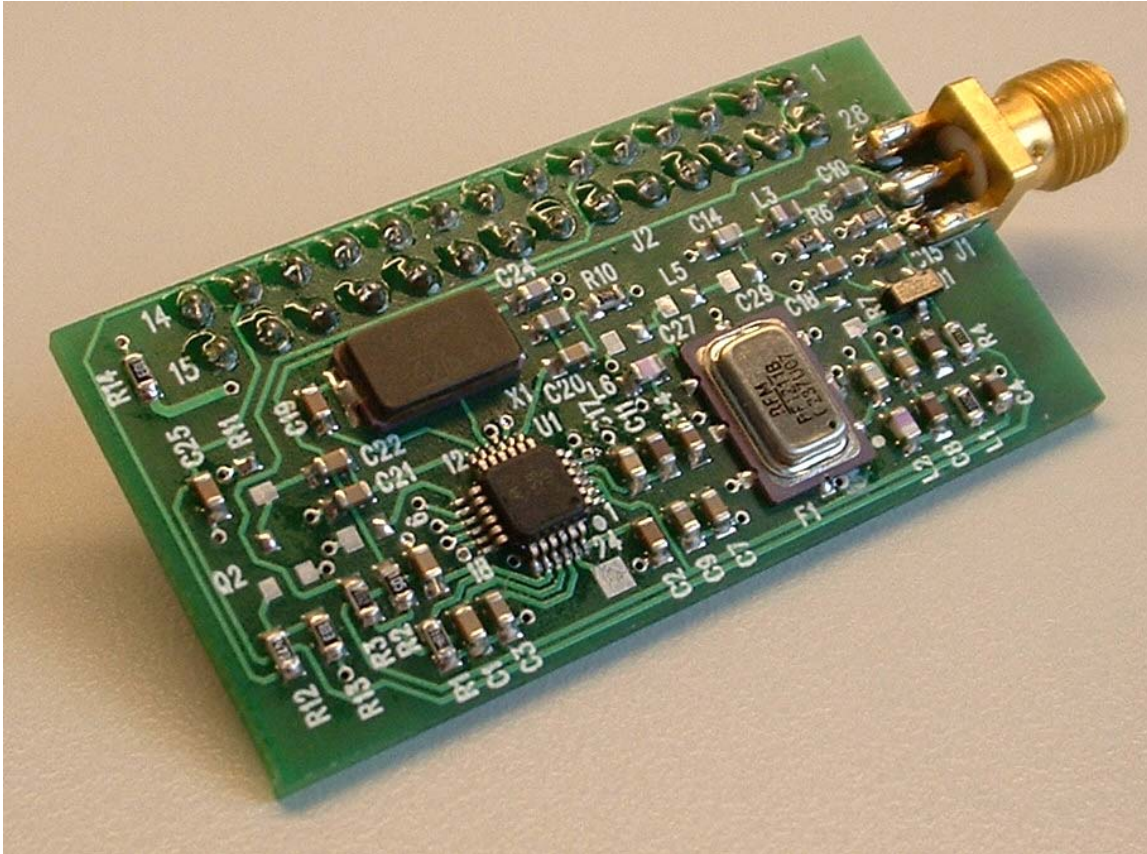
The dynamic range is then defined as the difference between the sensitivity level and IP3.

|                              |         |         |           |           |          |          |
|------------------------------|---------|---------|-----------|-----------|----------|----------|
| Ref :                        | 1111    | 1110    | 1121      | 1120      | 1131     | 1141     |
| LNA+SAW :                    | no      | yes     | no        | yes       | no       | no       |
| Frequency :                  | 315MHz  | 315MHz  | 433.92MHz | 433.92MHz | 868.3MHz | 916.5MHz |
| Romeo2 ref :                 | MC33591 | MC33591 | MC33591   | MC33591   | MC33593  | MC33593  |
| Data Manager :               | on      | on      | on        | on        | on       | on       |
| Modulation :                 | OOK     | OOK     | OOK       | OOK       | OOK      | OOK      |
| Cagc :                       | on      | on      | on        | on        | on       | on       |
| Sensitivity :                | -108.6  | -106.0  | -105.8    | -102.6    | -103.6   | -105.8   |
| Sensitivity+3dB :            | -105.6  | -103.0  | -102.8    | -99.6     | -100.6   | -102.8   |
| Interference Frequency 1 :   | 305.00  | 305.00  | 423.92    | 423.92    | 858.30   | 906.50   |
| Interference Frequency 2 :   | 310.00  | 310.00  | 428.92    | 428.92    | 863.30   | 911.50   |
| Interference level :         | -49.5   | -34.9   | -48.0     | -34.6     | -48.7    | -50.3    |
| Interference IM3 level :     | -108.6  | -38.3   | -50.4     | -34.6     | -51.3    | -52.6    |
| OOK Blocking level (10MHz) : | -53.2   | -22.2   | -49.7     | -32.7     | -54.6    | -51.2    |
| FSK Blocking level (10MHz) : | -48.4   | -18.4   | -48.6     | -19.6     | -52.4    | -51.6    |
| OOK Blocking level (2MHz) :  | -63.2   | -45.2   | -64.7     | -48.7     | -76.6    | -70.2    |
| FSK Blocking level (2MHz) :  | -61.4   | -43.4   | -62.6     | -33.6     | -65.4    | -82.6    |
| IP3 :                        | -20.0   | 0.7     | -19.1     | -0.6      | -21.3    | -22.6    |
| Dynamic Range :              | 88.6    | 106.7   | 86.7      | 102.0     | 82.3     | 83.2     |



---

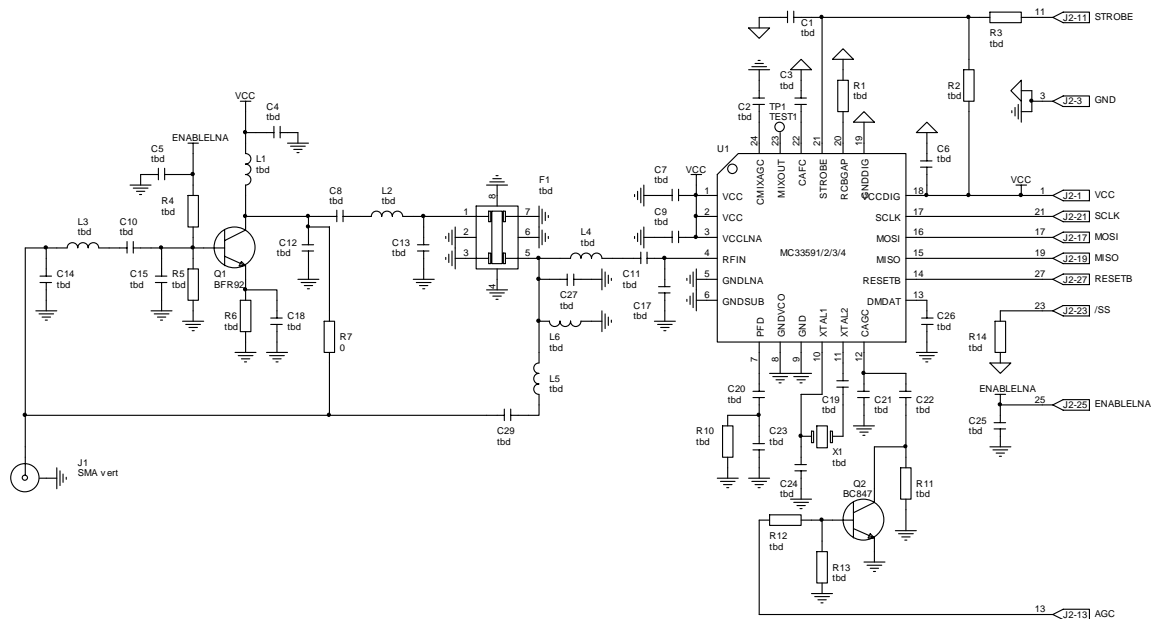
## CAD Files



### Generic schematics

The following schematic diagram is a generic one that can be adapted for many configurations.

- With or without LNA
- With or without SAW filter
- Different frequencies
- Different AGC and DMDAT filtering optimizations



A Receiver Using Romeo2, Rev. 0

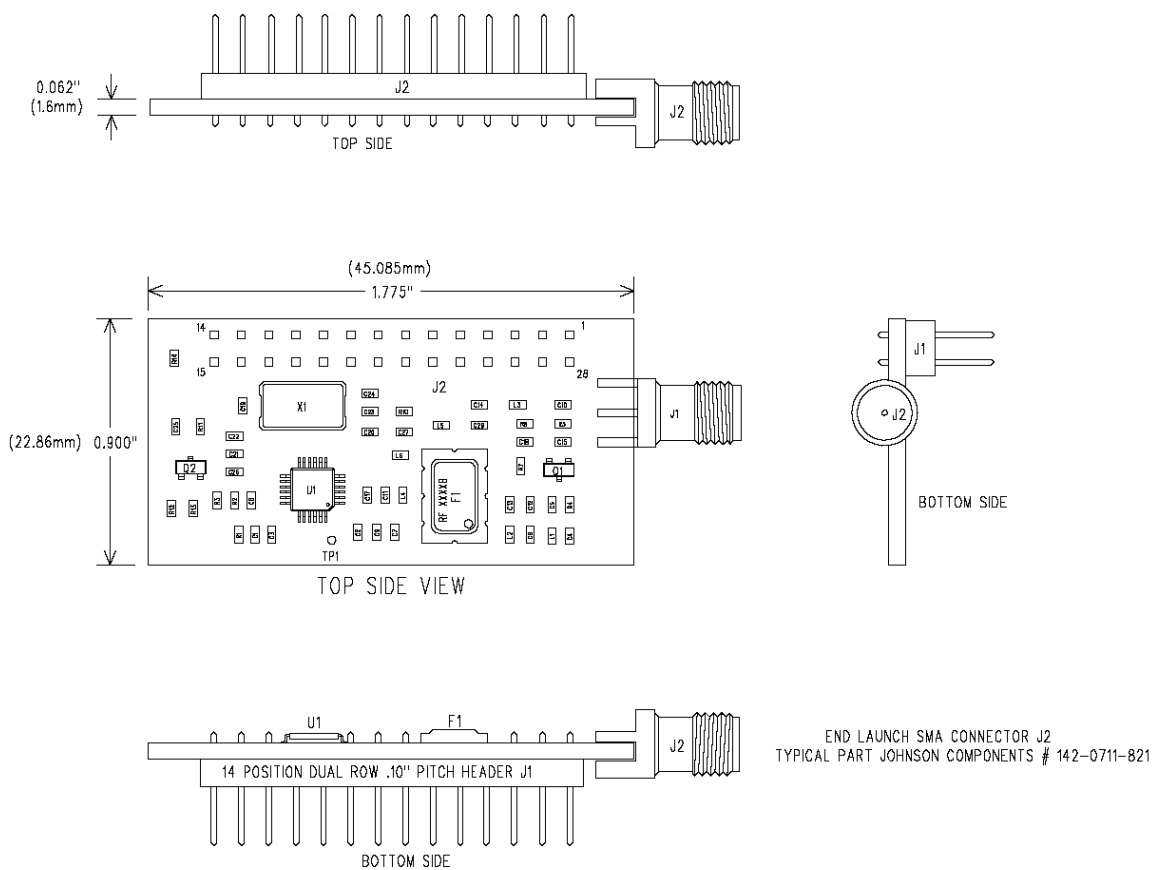
## Bill of Materials

|                      | <i>Module reference</i>  | <b>1110</b>     | <b>1111</b>    | <b>1120</b>      | <b>1121</b>      | <b>1131</b>     | <b>1141</b>     |
|----------------------|--------------------------|-----------------|----------------|------------------|------------------|-----------------|-----------------|
|                      | <i>Frequency</i>         | <b>315MHz</b>   | <b>315MHz</b>  | <b>433.92MHz</b> | <b>433.92MHz</b> | <b>868.3MHz</b> | <b>916.5MHz</b> |
|                      | <i>Equipment</i>         | <b>LNA+SAW</b>  | <b>Basic</b>   | <b>LNA+SAW</b>   | <b>Basic</b>     | <b>Basic</b>    | <b>Basic</b>    |
|                      | <i>Modulation</i>        | <b>OOK/FSK</b>  | <b>OOK/FSK</b> | <b>OOK/FSK</b>   | <b>OOK/FSK</b>   | <b>OOK/FSK</b>  | <b>OOK/FSK</b>  |
|                      | <i>Minimum Baud Rate</i> | <b>1.2kbps</b>  | <b>1.2kbps</b> | <b>1.2kbps</b>   | <b>1.2kbps</b>   | <b>1.2kbps</b>  | <b>1.2kbps</b>  |
| <b>Reference</b>     | <b>Package</b>           |                 |                |                  |                  |                 |                 |
| R1                   | 0603                     | 180k 1%         | 180k 1%        | 180k 1%          | 180k 1%          | 180k 1%         | 180k 1%         |
| R2                   | 0603                     | 1M 1%           | 1M 1%          | 1M 1%            | 1M 1%            | 1M 1%           | 1M 1%           |
| R3                   | 0603                     | 1k              | 1k             | 1k               | 1k               | 1k              | 1k              |
| R4                   | 0603                     | 15k             | not equipped   | 15k              | not equipped     | not equipped    | not equipped    |
| R5                   | 0603                     | 10k             | not equipped   | 10k              | not equipped     | not equipped    | not equipped    |
| R6                   | 0603                     | 1k              | not equipped   | 1k               | not equipped     | not equipped    | not equipped    |
| R7                   | 0603                     | not equipped    | not equipped   | not equipped     | not equipped     | not equipped    | not equipped    |
| R9 (may replace L1)  | 0603                     | 1k              | not equipped   | 1k               | not equipped     | not equipped    | not equipped    |
| R10                  | 0603                     | 1k              | 1k             | 1k               | 1k               | 1k              | 1k              |
| R11                  | 0603                     | not equipped    | not equipped   | not equipped     | not equipped     | not equipped    | not equipped    |
| R12                  | 0603                     | 47k             | 47k            | 47k              | 47k              | 47k             | 47k             |
| R13                  | 0603                     | 10k             | 10k            | 10k              | 10k              | 10k             | 10k             |
| R14                  | 0603                     | 10k             | not equipped   | 10k              | not equipped     | not equipped    | not equipped    |
| R20 (may replace L4) | 0603                     | not equipped    | 0R             | not equipped     | 0R               | 0R              | 0R              |
| C1                   | 0603                     | 100nF           | 100nF          | 100nF            | 100nF            | 100nF           | 100nF           |
| C2                   | 0603                     | 10nF            | 10nF           | 10nF             | 10nF             | 10nF            | 10nF            |
| C3                   | 0603                     | 100pF           | 100pF          | 100pF            | 100pF            | 100pF           | 100pF           |
| C4                   | 0603                     | 100pF           | not equipped   | 100pF            | not equipped     | not equipped    | not equipped    |
| C5                   | 0603                     | 100pF           | not equipped   | 100pF            | not equipped     | not equipped    | not equipped    |
| C6                   | 0603                     | 100nF           | 100nF          | 100nF            | 100nF            | 100nF           | 100nF           |
| C7                   | 0603                     | 100nF           | 100nF          | 100nF            | 100nF            | 100nF           | 100nF           |
| C8                   | 0603                     | 100pF           | not equipped   | 27pF             | not equipped     | not equipped    | not equipped    |
| C9                   | 0603                     | 100pF           | 100pF          | 100pF            | 100pF            | 100pF           | 100pF           |
| C10                  | 0603                     | 100pF           | not equipped   | 100pF            | not equipped     | not equipped    | not equipped    |
| C11                  | 0603                     | 100pF           | 100pF          | 100pF            | 100pF            | 100pF           | 100pF           |
| C12                  | 0603                     | 4.7pF           | not equipped   | 3.9pF            | not equipped     | not equipped    | not equipped    |
| C13                  | 0603                     | 3.3pF           | not equipped   | 1.5pF            | not equipped     | not equipped    | not equipped    |
| C14                  | 0603                     | 1.5pF           | not equipped   | 1pF              | 6.8pF            | 3.3pF           | 6.8pF           |
| C15                  | 0603                     | 4.7pF           | not equipped   | 1.8pF            | not equipped     | not equipped    | not equipped    |
| C16 (may replace L4) | 0603                     | 22pF            | not equipped   | 8.2pF            | not equipped     | not equipped    | not equipped    |
| C17                  | 0603                     | 2.7pF           | not equipped   | 8.2pF            | not equipped     | not equipped    | not equipped    |
| C18                  | 0603                     | 10nF            | not equipped   | 10nF             | not equipped     | not equipped    | not equipped    |
| C19                  | 0603                     | 10nF            | 10nF           | 10nF             | 10nF             | 10nF            | 10nF            |
| C20                  | 0603                     | 4.7nF           | 4.7nF          | 4.7nF            | 4.7nF            | 4.7nF           | 4.7nF           |
| C21                  | 0603                     | 100nF           | 100nF          | 100nF            | 100nF            | 100nF           | 100nF           |
| C22                  | 0603                     | 470nF           | 470nF          | 470nF            | 470nF            | 470nF           | 470nF           |
| C23                  | 0603                     | 390pF           | 390pF          | 390pF            | 390pF            | 390pF           | 390pF           |
| C24                  | 0603                     | 10pF            | 10pF           | 10pF             | 10pF             | 10pF            | 10pF            |
| C25                  | 0603                     | 10nF            | 10nF           | 10nF             | 10nF             | 10nF            | 10nF            |
| C26                  | 0603                     | not equipped    | not equipped   | not equipped     | not equipped     | not equipped    | not equipped    |
| C27                  | 0603                     | not equipped    | not equipped   | not equipped     | not equipped     | not equipped    | not equipped    |
| C29                  | 0603                     | not equipped    | 33pF           | not equipped     | 27pF             | 27pF            | 68pF            |
| L1                   | 0603                     | replaced by R9  | not equipped   | replaced by R9   | not equipped     | not equipped    | not equipped    |
| L2                   | 0603                     | 68nH            | not equipped   | 56nH             | not equipped     | not equipped    | not equipped    |
| L3                   | 0603                     | 22nH            | not equipped   | 18nH             | not equipped     | not equipped    | not equipped    |
| L4                   | 0603                     | replaced by C16 | not equipped   | replaced by C16  | not equipped     | not equipped    | not equipped    |
| L5                   | 0603                     | not equipped    | 82nH           | not equipped     | 56nH             | 10nH            | 1.5nH           |
| L6                   | 0603                     | 33nH            | not equipped   | 15nH             | not equipped     | not equipped    | not equipped    |
| Q1                   | SOT23                    | BFR92           | not equipped   | BFR92            | not equipped     | not equipped    | not equipped    |
| Q2                   | SOT23                    | BC847           | BC847          | BC847            | BC847            | BC847           | BC847           |
| F1                   |                          | RF1211B         | not equipped   | RF1172B          | not equipped     | not equipped    | not equipped    |
| U1                   |                          | MC33591         | MC33591        | MC33591          | MC33591          | MC33593         | MC33593         |
| X1                   |                          | 9.864375MHz     | 9.864375MHz    | 13.580625MHz     | 13.580625MHz     | 13.577491MHz    | 14.331195MHz    |
| J1                   |                          | SMA             | SMA            | SMA              | SMA              | SMA             | SMA             |
| J2                   |                          | 28 pins         | 28 pins        | 28 pins          | 28 pins          | 28 pins         | 28 pins         |

Nota : for all modules, C26=4.7nF if max data rate=1200bps. for general use, C26 is not equipped

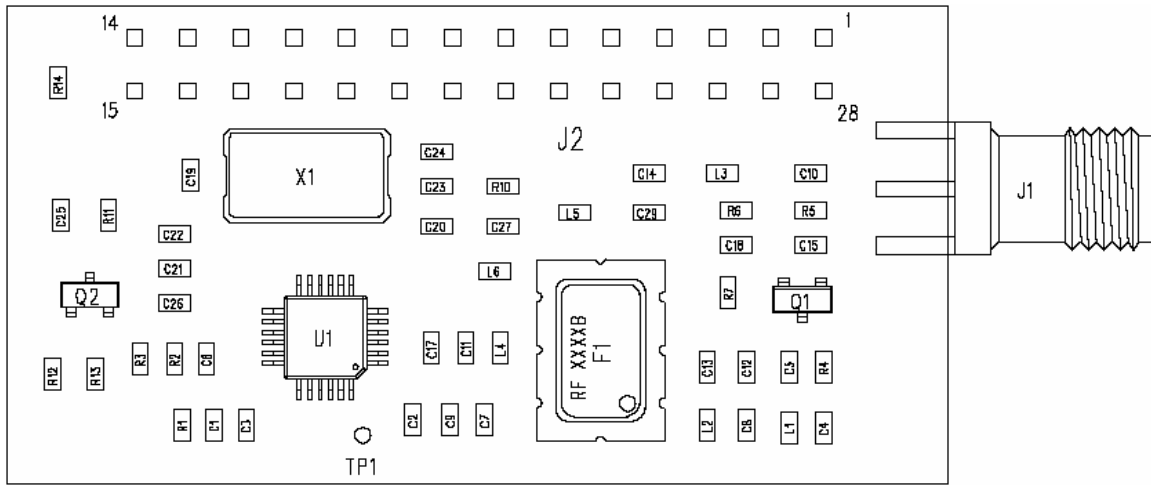
## A Receiver Using Romeo2, Rev. 0

Board Geometry



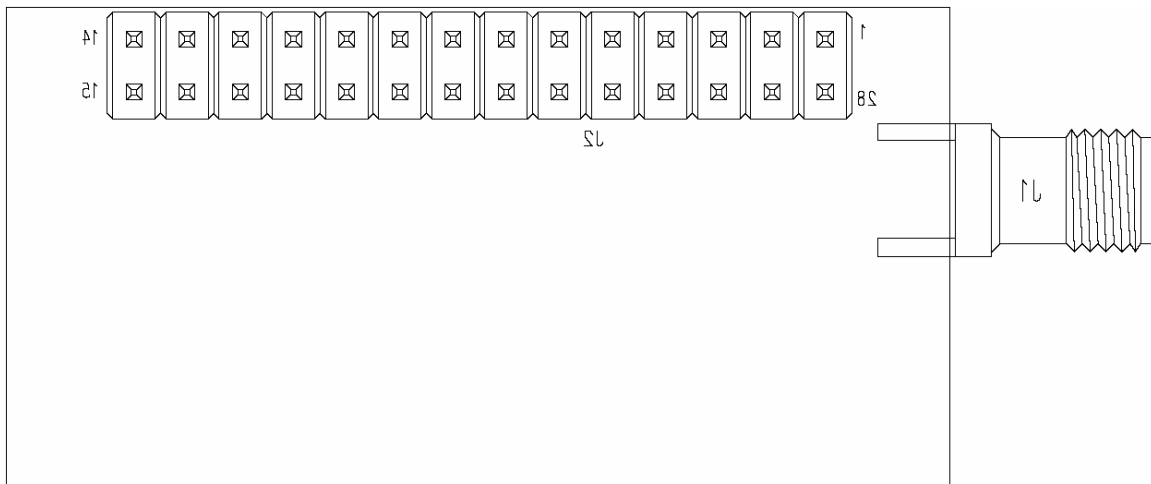
Refer to the updated pinout described in [“How to use the Romeo2 RF Module”](#) on page 14.

### Component Placement Side 1



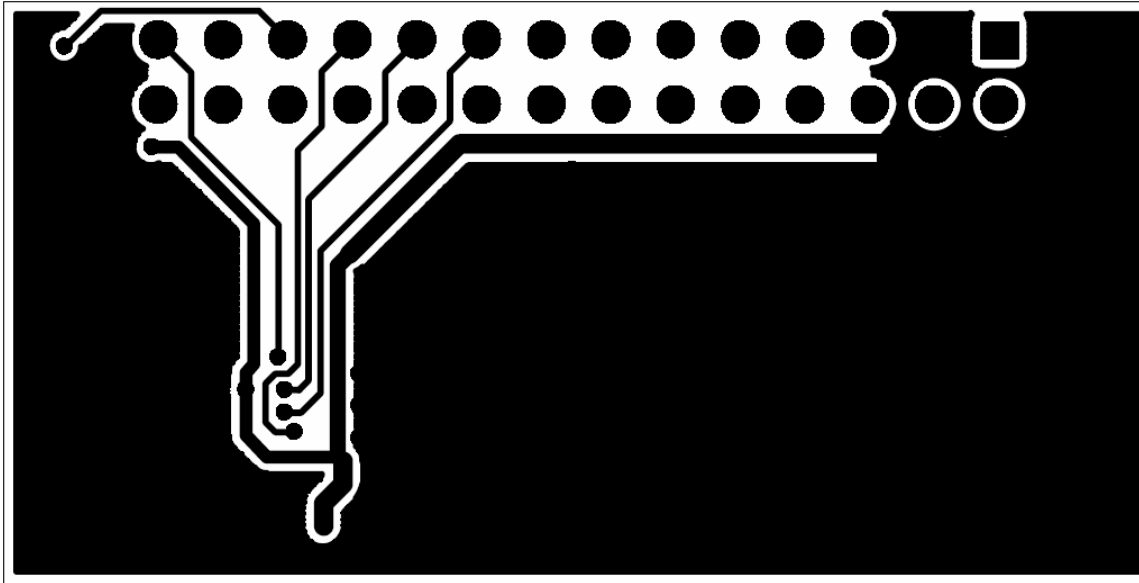
Refer to the updated pinout described in [“How to use the Romeo2 RF Module”](#) on page 14.

### Component Placement Side 2

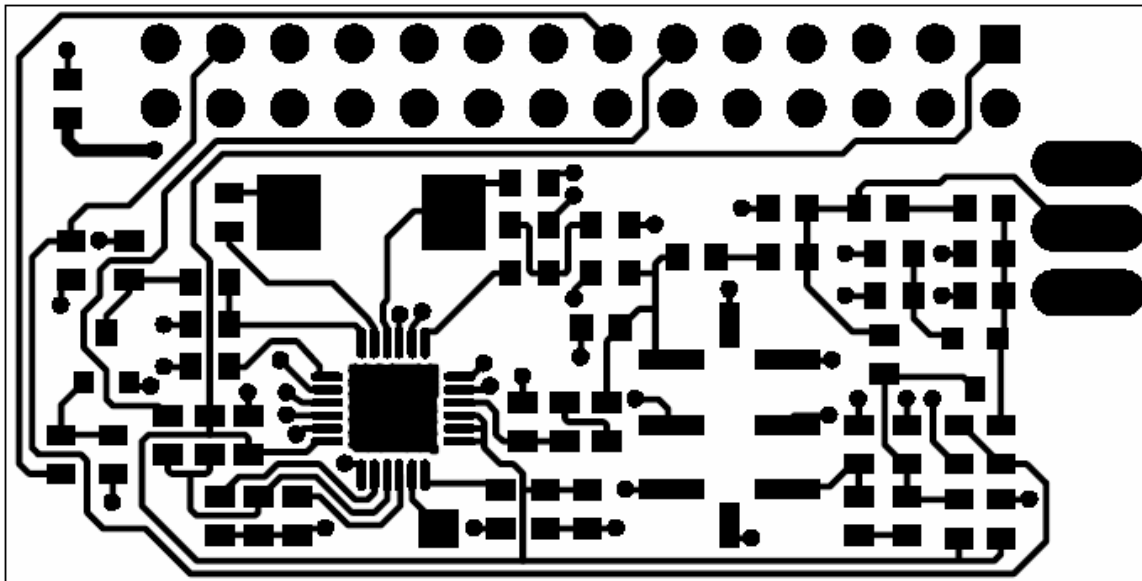


Refer to the updated pinout described in [“How to use the Romeo2 RF Module”](#) on page 14.

Copper Side 1



Copper Side 2



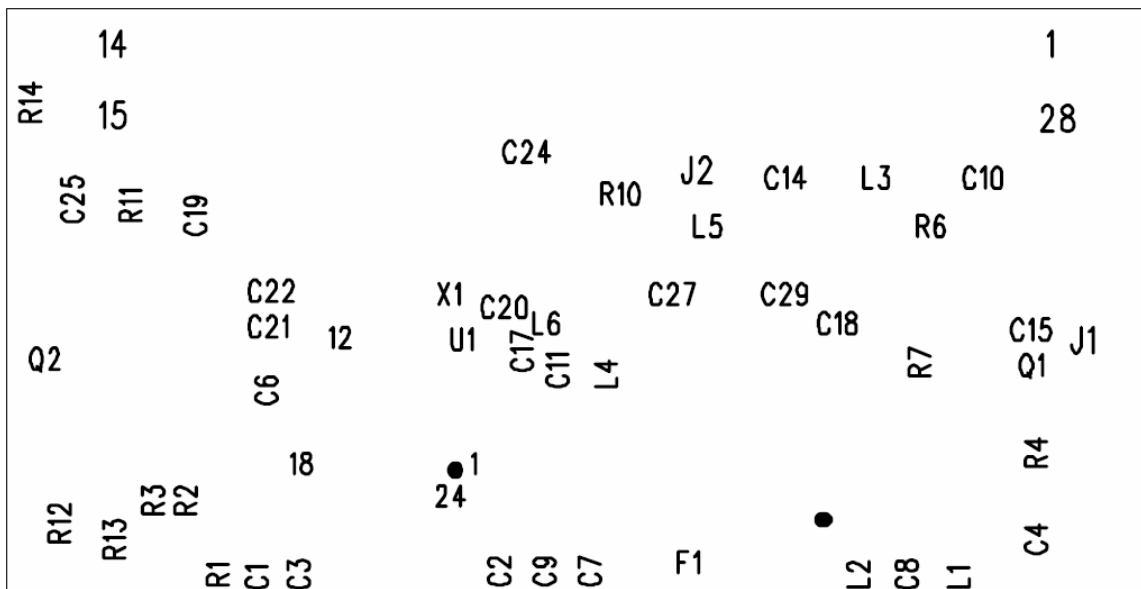
**Varnish Side 1**

Not available

**Varnish Side 2**

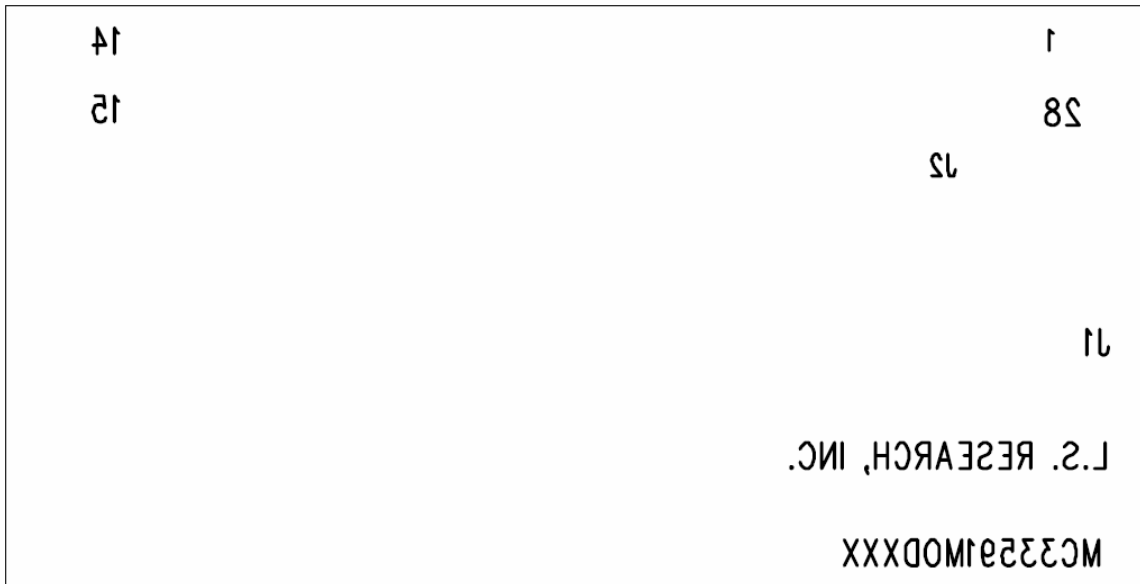
Not available

**Silkscreen Side 1**



Refer to the updated pinout described in [“How to use the Romeo2 RF Module”](#) on page 14.

Silkscreen Side 2



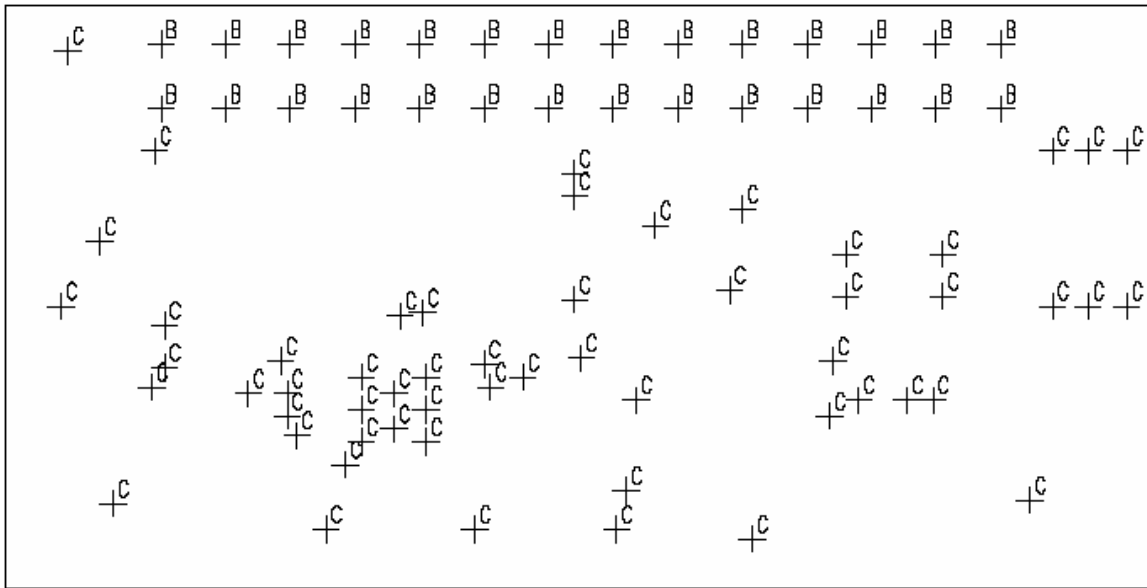
Refer to the updated pinout described in [“How to use the Romeo2 RF Module”](#) on page 14.

**Drilling and Sizes**

FABRICATION NOTES:

1. ALL BOARD DIMENSIONS IN INCHES. TOLERANCE =  $\pm 0.005$ " UNLESS NOTED OTHERWISE.
2. BOARD MATERIAL – FR-4 GRADE GLASS EPOXY, 0.062"  $\pm$  .005" THICKNESS MEASURED OVER SOLDERMASK  
MINIMUM FLAMMABILITY RATING UL 94V-0
3. OUTER LAYER COPPER THICKNESS 0.0014" (1 OZ).
4. SOLDER MASK OVER BARE COPPER, LPI, CLASS 2 GEN. INDUSTRIAL REGISTRATION  $\pm 0.004$ ", GREEN.  
NO COVERAGE ON SOLDER PADS PERMITTED.
5. FINISH-TIN/LEAD REFLOWED OR HOT AIR SOLDER LEVELED-0.0002" TO 0.002" PLATING THICKNESS.  
NO EXPOSED BARE COPPER PERMITTED
6. WHITE SILKSCREEN LEGEND OVER GREEN SOLDERMASK – TOP SIDE
7. HOLE SIZE TOLERANCE =  $\pm 0.002$ " UNLESS NOTED OTHERWISE.  
HOLE CENTERS AND PAD CENTERS TO BE CONCENTRIC WITHIN 0.004"





| SIZE | QTY | SYM | PLTD |
|------|-----|-----|------|
| 35   | 28  | B   | PLTD |
| 14   | 56  | C   | PLTD |

## ***How to Reach Us:***

### **USA/Europe/Locations not listed:**

Freescale Semiconductor Literature Distribution  
P.O. Box 5405, Denver, Colorado 80217  
1-800-521-6274 or 480-768-2130

### **Japan:**

Freescale Semiconductor Japan Ltd.  
SPS, Technical Information Center  
3-20-1, Minami-Azabu  
Minato-ku  
Tokyo 106-8573, Japan  
81-3-3440-3569

### **Asia/Pacific:**

Freescale Semiconductor H.K. Ltd.  
2 Dai King Street  
Tai Po Industrial Estate  
Tai Po, N.T. Hong Kong  
852-26668334

### ***Learn More:***

For more information about Freescale  
Semiconductor products, please visit  
<http://www.freescale.com>

Information in this document is provided solely to enable system and software implementers to use Freescale Semiconductor products. There are no express or implied copyright licenses granted hereunder to design or fabricate any integrated circuits or integrated circuits based on the information in this document.

Freescale Semiconductor reserves the right to make changes without further notice to any products herein. Freescale Semiconductor makes no warranty, representation or guarantee regarding the suitability of its products for any particular purpose, nor does Freescale Semiconductor assume any liability arising out of the application or use of any product or circuit, and specifically disclaims any and all liability, including without limitation consequential or incidental damages. "Typical" parameters which may be provided in Freescale Semiconductor data sheets and/or specifications can and do vary in different applications and actual performance may vary over time. All operating parameters, including "Typicals" must be validated for each customer application by customer's technical experts. Freescale Semiconductor does not convey any license under its patent rights nor the rights of others. Freescale Semiconductor products are not designed, intended, or authorized for use as components in systems intended for surgical implant into the body, or other applications intended to support or sustain life, or for any other application in which the failure of the Freescale Semiconductor product could create a situation where personal injury or death may occur. Should Buyer purchase or use Freescale Semiconductor products for any such unintended or unauthorized application, Buyer shall indemnify and hold Freescale Semiconductor and its officers, employees, subsidiaries, affiliates, and distributors harmless against all claims, costs, damages, and expenses, and reasonable attorney fees arising out of, directly or indirectly, any claim of personal injury or death associated with such unintended or unauthorized use, even if such claim alleges that Freescale Semiconductor was negligent regarding the design or manufacture of the part.

Freescale™ and the Freescale logo are trademarks of Freescale Semiconductor, Inc. All other product or service names are the property of their respective owners.  
© Freescale Semiconductor, Inc. 2004.