



**Part Number :** [03091041](#)

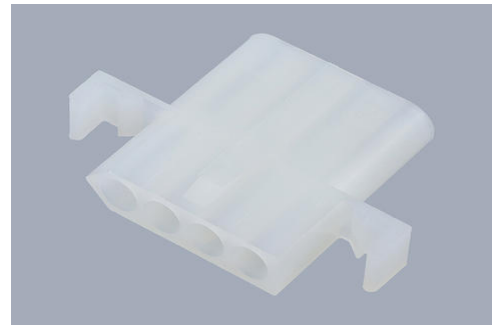
**Product Description :** 2.36mm Diameter Standard .093" Pin and Socket Receptacle Housing, 4 Circuits, Single Row, Natural

**Series Number :** 1490

**Status :** Active

**Product Category :** Connector Housings

**Engineering Part Number :** 1490-R



---

## Documents and Resources

### Drawings

[003091041\\_sd.pdf](#)

[PK-1490-001-001.pdf](#)

### 3D Models and Design Files

[STEP AP242](#)

[SOLIDWORKS](#)

[Creo](#)

### Specifications

[PS-02-09-001.pdf](#)


[PS-42477-001.pdf](#)

[PS-43660-9999-001.pdf](#)

---

## Product Environment Compliance

### Compliance

GADSL/IMDS	Not Relevant
China RoHS	 per SJ/T 11365-2006
EU ELV	Not Relevant
Low-Halogen Status	Low-Halogen per IEC 61249-2-21
REACH SVHC	Not Contained per D(2025)7771-DC (04 Feb 2026)
EU RoHS	Compliant per EU 2015/863

## Compliance Statements

- EU RoHS
- REACH SVHC
- Low-Halogen

## Industry Documents

- IPC 1752A Class C
- IPC 1752A Class D
- Molex Product Compliance Declaration
- IEC-62474
- chemSHERPA (xml)

## Substances of Interest

- PFAS

## EU RoHS Certificate of Compliance

## Additional Product Compliance Information

---

## Part Details

### General

Status	Active
Category	Connector Housings
Series	1490
Description	2.36mm Diameter Standard .093" Pin and Socket Receptacle Housing, 4 Circuits, Single Row, Natural
Application	Wire-to-Wire
Comments	14.0A max. can be achieved when housing is used with 42477 or 42478 terminals
Component Type	Housing
Product Name	Standard .093"
UPC	800753618954

### Agency

CSA	LR19980
UL	E29179

### Physical

Circuits Detail	(1 x 4)
-----------------	---------

Circuits (maximum)	4
Color - Resin	Natural
Flammability	94V-2
Gender	Receptacle
Glow-Wire Capable	No
Material - Resin	Nylon
Net Weight	2.397/g
Number of Rows	1
Packaging Type	Bag
Panel Mount	Yes
Pitch - Mating Interface	5.03mm
Pitch - Termination Interface	5.03mm
Stackable	No
Temperature Range - Operating	-40° to +105°C

### Solder Process Data

Lead-Free Process Capability	N/A
------------------------------	-----

---

### Mates With / Use With

#### Mates with Part(s)

Description	Part Number
2.36mm Diameter Standard .093" Pin and Socket Plug Housing, 4 Circuits, Single Row	<a href="#">03092041</a>
Standard .093" Pin and Socket Vertical Headers	<a href="#">3099</a>

#### Use with Part(s)

Description	Part Number
Standard .093" Pin and Socket Female Crimp Terminals	<a href="#">1189</a>
Standard .093" Pin and Socket Male Crimp Terminals	<a href="#">1190</a>
Standard .093" Pin and Socket Male Crimp Terminals	<a href="#">1380</a>

Standard .093" Pin and Socket Female Crimp Terminals	<u>1381</u>
Standard .093" Pin and Socket Male Crimp Terminal	<u>1434</u>
Standard .093" Pin and Socket Male Crimp Grounding Terminals	<u>1973</u>

---

This document was generated on Jun 06, 2026