



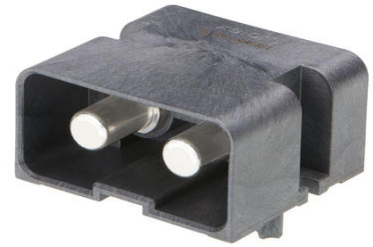
**Part Number :** [2155106241](#)

**Product Description :** PowerWize BMI 6.00mm, 2-circuit, Solder Tail, Right-Angle Header, Tray

**Series Number :** 215510

**Status :** Active

**Product Category :** PCB Headers and Receptacles



---

## Documents and Resources

### Drawings

[2155106241\\_sd.pdf](#)

[2155106121-PK-000.pdf](#)

### 3D Models and Design Files

[STEP AP242](#)

[SOLIDWORKS](#)

[Creo](#)

[Symbol and Footprint \(Multi-Format\)](#)

### Specifications

[2155101000-AS-000.pdf](#)


[2155100006-PS-000.pdf](#)

[2155106000-TS-000.pdf](#)

---

## Product Environment Compliance

### Compliance

|                    |   |
|--------------------|---|
| GADSL/IMDS         | Compliant with Exemption 33   |
| China RoHS         |  per SJ/T 11365-2006 |
| EU ELV             | Not Relevant  |
| Low-Halogen Status | Low-Halogen per IEC 61249-2-21  |
| REACH SVHC         | Not Contained per D(2024)7663-DC (21 Jan 2025)  |
| EU RoHS            | Compliant per EU 2015/863   |

### [Compliance Statements](#)

- EU RoHS
- REACH SVHC
- Low-Halogen

#### Industry Documents

- IPC 1752A Class C
- IPC 1752A Class D
- Molex Product Compliance Declaration
- IEC-62474
- chemSHERPA (xml)

#### Substances of Interest

- PFAS

#### EU RoHS Certificate of Compliance

#### Additional Product Compliance Information

## Part Details

### General

|                |  |
|----------------|--|
| Status         | Active   |
| Category       | PCB Headers and Receptacles  |
| Series         | 215510   |
| Description    | PowerWize BMI 6.00mm, 2-circuit, Solder Tail, Right-Angle Header, Tray |
| Application    | Panel-to-Board, Power  |
| Component Type | PCB Header   |
| Product Name   | PowerWize BMI  |
| UPC            | 195842224698   |

### Agency

|    |        |
|----|--------|
| UL | E29179 |
|----|--------|

### Electrical

|                               |        |
|-------------------------------|--------|
| Current - Maximum per Contact | 110.0A |
| Voltage - Maximum             | 600V   |

### Physical

|                   |    |
|-------------------|----|
| Breakaway         | No |
| Circuits (Loaded) | 2  |

|                                |                              |
|--------------------------------|------------------------------|
| Circuits (maximum)             | 2                            |
| Color - Resin                  | Black                        |
| Diameter                       | 6.00mm                       |
| Durability (mating cycles max) | 200                          |
| First Mate / Last Break        | No                           |
| Flammability                   | 94V-0                        |
| Glow-Wire Capable              | No                           |
| Keying to Mating Part          | No                           |
| Lock to Mating Part            | No                           |
| Material - Metal               | Copper Alloy                 |
| Material - Plating Mating      | Silver                       |
| Material - Plating Termination | Silver                       |
| Material - Resin               | Liquid Crystal Polymer (LCP) |
| Net Weight                     | 53.120/g                     |
| Number of Rows                 | 1                            |
| Orientation                    | Right Angle                  |
| Packaging Type                 | Tray                         |
| PCB Locator                    | Yes                          |
| PCB Retention                  | Yes                          |
| PCB Thickness - Recommended    | 2.36mm                       |
| PC Tail Length                 | 3.50mm                       |
| Pitch - Mating Interface       | 17.00mm                      |
| Pitch - Termination Interface  | 17.00mm                      |
| Plating min - Mating           | 3.180µm                      |
| Plating min - Termination      | 3.180µm                      |
| Polarized to Mating Part       | Yes                          |
| Polarized to PCB               | Yes                          |
| Temperature Range - Operating  | -40° to +125°C               |
| Termination Interface Style    | Solder                       |

---

## Mates With / Use With

### Mates with Part(s)

| Description              | Part Number       |
|--------------------------|-------------------|
| PowerWize BMI 6.00mm, 2- | <u>2155116121</u> |

|   |  |
|---|--|
| circuit, Black Panel Mount<br>Receptacle Housing, Bag |  |
|---|--|

---

This document was generated on Apr 30, 2026