



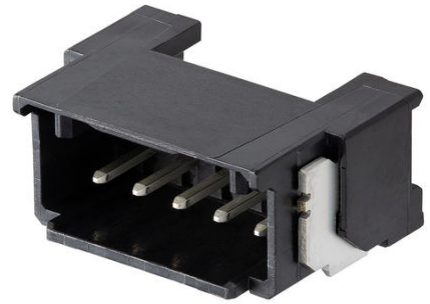
Part Number : [2059720071](#)

Product Description : Micro-One Wire-to-Board Header, Right-Angle, 2.00mm Pitch, Single Row, Surface Mount, 7 Circuits, Tin-Bismuth Plating, Black

Series Number : 205972

Status : Not Recommended For New Design

Product Category : PCB Headers and Receptacles



Documents and Resources

Drawings

[2059720071_sd.pdf](#)

3D Models and Design Files

[STEP AP242](#)

[SOLIDWORKS](#)

[Creo](#)

[Symbol and Footprint \(Multi-Format\)](#)

[2059720071.dxf](#)


Specifications

[2059790000-AS-000.pdf](#)

[2059790000-PS-000.pdf](#)

Product Environment Compliance

Compliance

GADSL/IMDS	Compliant with Exemption 44; 33
China RoHS	 per SJ/T 11365-2006
EU ELV	Not Relevant
Low-Halogen Status	Low-Halogen per IEC 61249-2-21
REACH SVHC	Not Contained per D(2025)7771-DC (04 Feb 2026)
EU RoHS	Compliant per EU 2015/863

[Compliance Statements](#)

- EU RoHS
- REACH SVHC
- Low-Halogen

Industry Documents

- IPC 1752A Class C
- IPC 1752A Class D
- Molex Product Compliance Declaration
- IEC-62474
- chemSHERPA (xml)

Substances of Interest

- PFAS

EU RoHS Certificate of Compliance

Additional Product Compliance Information

Part Details

General

Status	Not Recommended For New Design
Category	PCB Headers and Receptacles
Series	205972
Description	Micro-One Wire-to-Board Header, Right-Angle, 2.00mm Pitch, Single Row, Surface Mount, 7 Circuits, Tin-Bismuth Plating, Black
Application	Signal, Wire-to-Board
Component Type	PCB Header
Product Name	Micro-One
UPC	191130093649

Agency

CSA	LR19980
UL	E29179

Electrical

Current - Maximum per Contact	4.0A
Voltage - Maximum	250V AC (RMS)/DC

Physical

Breakaway	No
Circuits (Loaded)	7
Circuits (maximum)	7
Color - Resin	Black
Durability (mating cycles max)	30
First Mate / Last Break	No
Flammability	94V-0
Glow-Wire Capable	No
Lock to Mating Part	Yes
Material - Metal	Brass
Material - Plating Mating	Tin-Bismuth
Material - Plating Termination	Tin-Bismuth
Material - Resin	Polyamide (PA)
Net Weight	1115.283/mg
Number of Rows	1
Orientation	Right Angle
Packaging Type	Embossed Tape on Reel
PCB Retention	Yes
Pitch - Mating Interface	2.00mm
Plating min - Termination	1.000µm
Polarized to PCB	Yes
Shrouded	Shrouded
Temperature Range - Operating	-40° to +105°C
Termination Interface Style	Surface Mount

Mates With / Use With

Mates with Part(s)

Description	Part Number
Micro-One Wire-to-Board Receptacle Housings	<u>205979</u>
Micro-One Single Row Receptacle Housings	<u>212724</u>

This document was generated on May 19, 2026