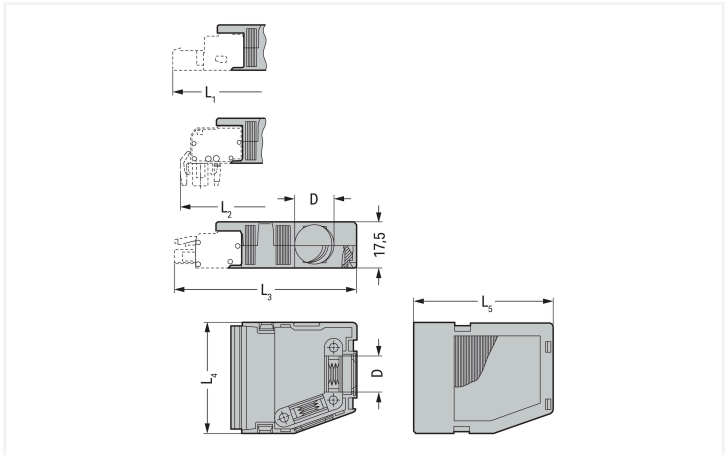


Color: ■ orange

Similar to illustration



Dimensions in mm

2- to 3-pole; only suitable for cable ties; 1 cable outlet (rear side); max. 3.6 mm cable tie width  
4- to 6-pole; suitable for cable clamp; 1 x cable outlet (rear side)  
7- to 8-pole; suitable for cable clamp; 1 x cable outlet (rear side) and 1 x cable outlet (side); 1 cover (included)  
9- to 16-pole; suitable for cable clamp; 1 x cable outlet (rear side) and 2 x cable outlets (side); 2 covers (included)  
Cable ties and binding tools are not offered by WAGO.

- Suitable for cable clamp
- 1 x cable outlet, rear

Connection data

Connection 1	
Pole number	5

Physical data

Pin spacing	5.08 mm / 0.2 inches
Width	28 mm / 1.102 inches
Height	17.5 mm / 0.689 inches
Depth	41.5 mm / 1.634 inches

Mechanical data

Suitable	for standard male and female connectors
----------	---

Material data



Note (material data)	
<a href="#">Information on material specifications can be found here</a>	
Color	orange
Material group	I
Insulation material (main housing)	Polyamide (PA66)
Flammability class per UL94	V0
Fire load	0.198 MJ
Weight	6.6 g




Commercial data	
Product Group	3 (Multi Conn. System)
PU (SPU)	25 pcs
Packaging type	Box
Country of origin	DE
GTIN	4017332283113
Customs tariff number	39269097900

Product classification	
UNSPSC	39121421
eCl@ss 10.0	27-14-11-92
eCl@ss 9.0	27-44-04-92
ETIM 9.0	EC002848
ETIM 8.0	EC002848
ECCN	NO US CLASSIFICATION

Environmental Product Compliance	
RoHS Compliance Status	Compliant,No Exemption

Approvals / Certificates					
General approvals			Approvals for marine applications		
					
Approval	Standard	Certificate Name	Approval	Standard	Certificate Name
KEMA/KEUR DEKRA Certification B.V.	EN 61984	71-130478 REV.1	ABS American Bureau of Ship- ping	-	19-HG15869876-PDA
UL UL International Germany GmbH	UL 1977	E45171			

Downloads	
Environmental Product Compliance	
Compliance Search	
Environmental Product Compliance 232-635	

Documentation			
Additional Information			
Technical Section	03.04.2019	pdf 2027.26 KB	



CAD/CAE-Data	
<div>CAD data</div> <div>2D/3D Models 232-635</div> <div>↓</div>	<div>CAE data</div> <div>EPLAN Data Portal 232-635</div> <div>↓</div>
	<div>ZUKEN Portal 232-635</div> <div>↓</div>

1 Compatible Products
1.1 Optional Accessories
1.1.1 Installation
1.1.1.1 Mounting accessories



<div>Item No.: 209-177</div> <div>Cable clamp; for strain relief; 4- to 6-pole</div>	<div>Item No.: 209-176</div> <div>Fixing screws; for cable clamp; 4- to 6-pole</div>
--	--

1.1.2 Marking
1.1.2.1 Marker



<div>Item No.: 793-5501/000-006</div> <div>WMB marking card; as card; for terminal block width 5 - 17.5 mm; stretchable 5 - 5.2 mm; plain; snap-on type; blue</div>	<div>Item No.: 793-5501/000-014</div> <div>WMB marking card; as card; for terminal block width 5 - 17.5 mm; stretchable 5 - 5.2 mm; plain; snap-on type; brown</div>	<div>Item No.: 793-5501/000-007</div> <div>WMB marking card; as card; for terminal block width 5 - 17.5 mm; stretchable 5 - 5.2 mm; plain; snap-on type; gray</div>	<div>Item No.: 793-5501/000-023</div> <div>WMB marking card; as card; for terminal block width 5 - 17.5 mm; stretchable 5 - 5.2 mm; plain; snap-on type; green</div>
<div>Item No.: 793-5501/000-017</div> <div>WMB marking card; as card; for terminal block width 5 - 17.5 mm; stretchable 5 - 5.2 mm; plain; snap-on type; light green</div>	<div>Item No.: 793-5501/000-012</div> <div>WMB marking card; as card; for terminal block width 5 - 17.5 mm; stretchable 5 - 5.2 mm; plain; snap-on type; orange</div>	<div>Item No.: 793-5501/000-005</div> <div>WMB marking card; as card; for terminal block width 5 - 17.5 mm; stretchable 5 - 5.2 mm; plain; snap-on type; red</div>	<div>Item No.: 793-5501/000-024</div> <div>WMB marking card; as card; for terminal block width 5 - 17.5 mm; stretchable 5 - 5.2 mm; plain; snap-on type; violet</div>
<div>Item No.: 793-5501</div> <div>WMB marking card; as card; for terminal block width 5 - 17.5 mm; stretchable 5 - 5.2 mm; plain; snap-on type; white</div>	<div>Item No.: 793-5501/000-002</div> <div>WMB marking card; as card; for terminal block width 5 - 17.5 mm; stretchable 5 - 5.2 mm; plain; snap-on type; yellow</div>	<div>Item No.: 793-501/000-006</div> <div>WMB marking card; as card; not stretchable; plain; snap-on type; blue</div>	<div>Item No.: 793-501/000-007</div> <div>WMB marking card; as card; not stretchable; plain; snap-on type; gray</div>
<div>Item No.: 793-501/000-023</div> <div>WMB marking card; as card; not stretchable; plain; snap-on type; green</div>	<div>Item No.: 793-501/000-017</div> <div>WMB marking card; as card; not stretchable; plain; snap-on type; light green</div>	<div>Item No.: 793-501/000-012</div> <div>WMB marking card; as card; not stretchable; plain; snap-on type; orange</div>	<div>Item No.: 793-501/000-005</div> <div>WMB marking card; as card; not stretchable; plain; snap-on type; red</div>
<div>Item No.: 793-501/000-024</div> <div>WMB marking card; as card; not stretchable; plain; snap-on type; violet</div>	<div>Item No.: 793-501</div> <div>WMB marking card; as card; not stretchable; plain; snap-on type; white</div>	<div>Item No.: 793-501/000-002</div> <div>WMB marking card; as card; not stretchable; plain; snap-on type; yellow</div>	<div>Item No.: 2009-115/000-006</div> <div>WMB-Inline; for Smart Printer; 1500 pieces on roll; stretchable 5 - 5.2 mm; plain; snap-on type; blue</div>
<div>Item No.: 2009-115/000-007</div> <div>WMB-Inline; for Smart Printer; 1500 pieces on roll; stretchable 5 - 5.2 mm; plain; snap-on type; gray</div>	<div>Item No.: 2009-115/000-023</div> <div>WMB-Inline; for Smart Printer; 1500 pieces on roll; stretchable 5 - 5.2 mm; plain; snap-on type; green</div>	<div>Item No.: 2009-115/000-017</div> <div>WMB-Inline; for Smart Printer; 1500 pieces on roll; stretchable 5 - 5.2 mm; plain; snap-on type; light green</div>	<div>Item No.: 2009-115/000-012</div> <div>WMB-Inline; for Smart Printer; 1500 pieces on roll; stretchable 5 - 5.2 mm; plain; snap-on type; orange</div>

1.1.2.1 Marker



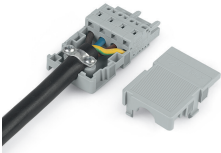
**Item No.: 2009-115/000-024**  
WMB-Inline; for Smart Printer; 1500 pieces on roll; stretchable 5 - 5.2 mm; plain; snap-on type; violet

**Item No.: 2009-115**  
WMB-Inline; for Smart Printer; 1500 pieces on roll; stretchable 5 - 5.2 mm; plain; snap-on type; white

**Item No.: 2009-115/000-002**  
WMB-Inline; for Smart Printer; 1500 pieces on roll; stretchable 5 - 5.2 mm; plain; snap-on type; yellow

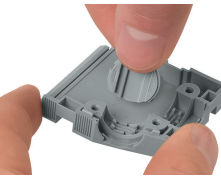
Installation Notes

Application

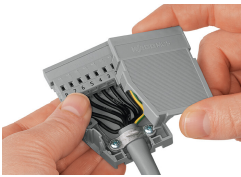


2- to 3-pole; only suitable for cable ties; max. 3.6 mm cable tie width  
4- to 16-pole; suitable for cable clamp, covers (included)  
Cable ties and binding tools are not offered by WAGO.

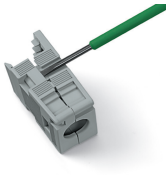
Installation



Snapping a cover into the unused cable outlet.



Strain relief housing shown with a male connector equipped with CAGE CLAMP®



Disassembling a strain relief housing is only possible using an operating tool (e.g., 210-719).