



Copyright FCI.



FCIconnect.com



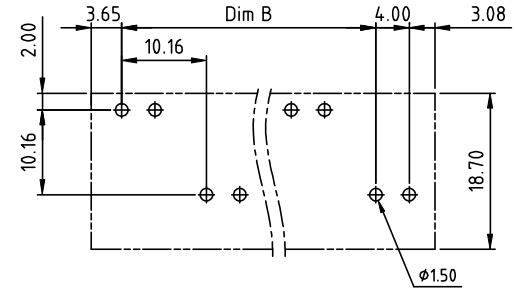
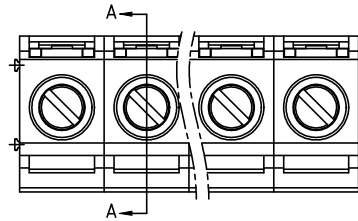
1

2

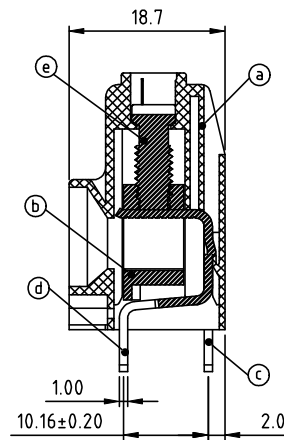
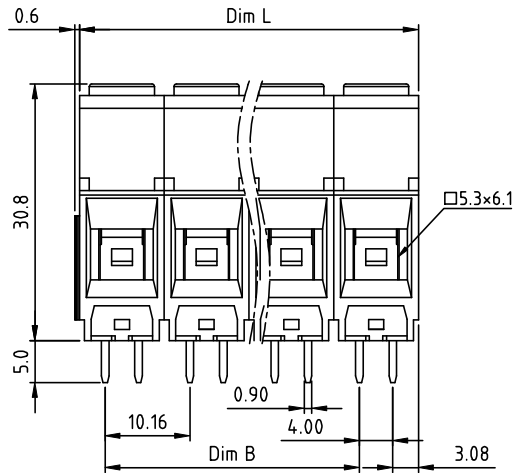
3

4

PRODUCT NUMBER	PITCH
KPxx21x000J0G	10.16 mm



RECOMMENDED P.C.B LAYOUT  
TOP VIEW



SECTION A-A

Material:

- Item (a) Terminal housing : Thermoplastic (UL 94V-0)
- Item (b) Clamp : Brass , Ni plated
- Item (c) Solder pin (Back single row) : Copper , Tin plated
- Item (d) Solder pin (Front single row) : Copper , Tin plated
- Item (e) Terminal screw : Steel Zinc plating"-slot type

Electrical cULs

- Voltage rating : 600V
- Current rating : 65A
- Wire range :
- Solid wire (AWG) : 6-20
- Stranded wire (AWG) : 6-20
- Torque (LB-In.) : 12.2
- Screw : M4.5
- Wire strip length : 10 ~ 11mm
- Withstanding voltage : 2.2KV
- Operating temperature : -40°C+115°C
- Soldering temperature : 260°C+5°C/5 Sec
- Safety Approval : cULus

A

A

N = Number of poles  
 Dim L=Nx10.16  
 Dim B=(N-1)x10.16

Poles	Tolerance
2P/4P	±0.20
6P/8P	±0.30
10P/12P	±0.40

PART NO.: KP xx 2 1 x 0 00J0 G

End Stackable  
 No. of poles  
 02 2 poles  
 04 4 poles  
 ... ..  
 12 12 poles

Body Color  
 0 Black (RAL9005)  
 2 Red (RAL3001/D)  
 3 Orange(RAL2011/P)  
 4 Yellow(RAL1018/A)  
 5 Green(RAL6018/T)  
 6 Blue (RAL5015/A)  
 8 Grey(RAL7035/D)  
 9 White(RAL1102)  
 C Green(RAL6018/U)

RoHS compliant  
 (lead<4%)  
 In copper Alloy

mat'l. code				surface ASME Y14.5		tolerance ASME Y14.5		projection		product family TERMINAL BLOCK	
ltr ecn no dr date				tolerances unless otherwise specified		X.±0.5		MM		title TERMINAL BLOCK	
				angles		X.X±0.3		scale		RISING CLAMP,100D WIRE INLET,DOUBLE INTERLACE TAIL,EVEN POLES	
				X'±1"		X.XX±0.1		FCI		sheet 1 of 2 size	
				dr		EVIN ZHONG 041414				KPxx21x000J0G A4	
				enrg		EVIN ZHONG 041414				type CUSTOMER Drawing	
				chr		HANKE FENG 041414					
				appd		SHI JUN 041414					
sheet index		revision sheet		A 1							

B

B

form: A4mmXLc

1

2

3

4



Copyright FCI.



FCIconnect.com



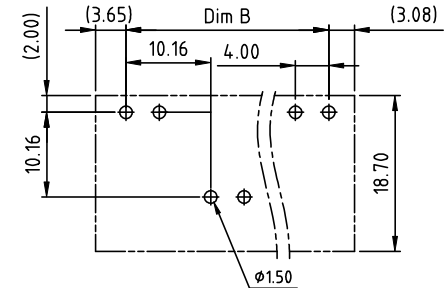
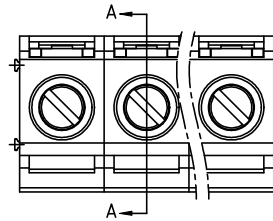
1

2

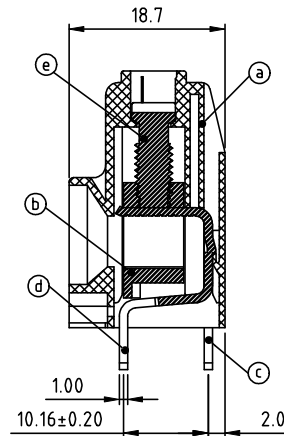
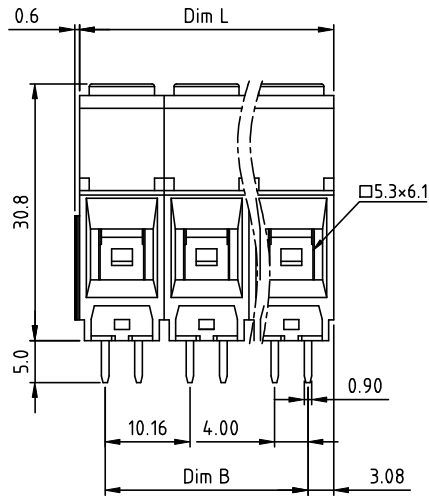
3

4

PRODUCT NUMBER	PITCH
KPxx21x000J0G	10.16 mm



RECOMMENDED P.C.B LAYOUT  
TOP VIEW



SECTION A-A

Material:

- Item (a) Terminal housing : Thermoplastic (UL 94V-0)
- Item (b) Clamp : Brass , Ni plated
- Item (c) Solder pin (Back single row) : Copper , Tin plated
- Item (d) Solder pin (Front single row) : Copper , Tin plated
- Item (e) Terminal screw : Steel Zinc plating"-slot type

Electrical cULs

- Voltage rating : 600V
- Current rating : 65A
- Wire range :
- Solid wire (AWG) : 6-20
- Stranded wire (AWG) : 6-20
- Torque (LB-In.) : 12.2
- Screw : M4.5
- Wire strip length : 10 ~ 11mm
- Withstanding voltage : 2.2KV
- Operating temperature : -40°C+115°C
- Soldering temperature : 260°C+5°C/5 Sec
- Safety Approval : cULus

A

A

N = Number of poles  
 Dim L=Nx10.16  
 Dim B=(N-1)x10.16

Poles	Tolerance
3P	±0.20
5P/7P	±0.30
9P/11P	±0.40

PART NO.: KP xx 2 1 x 0 00J0 G

- |               |                   |            |                     |                 |
|---------------|-------------------|------------|---------------------|-----------------|
| End Stackable | 0 Black (RAL9005) | Body Color | 2 Red (RAL3001/D)   | RoHS compliant  |
| No. of poles  | 03 3 poles        |            | 3 Orange(RAL2011/P) | (lead<4%)       |
|               | 05 5 poles        |            | 4 Yellow(RAL1018/A) | In copper Alloy |
|               | ...               |            | 5 Green(RAL6018/T)  |                 |
|               | 11 11 poles       |            | 6 Blue (RAL5015/A)  |                 |
|               |                   |            | 8 Grey(RAL7035/D)   |                 |
|               |                   |            | 9 White(RAL1102)    |                 |
|               |                   |            | C Green(RAL6018/U)  |                 |

mat'l. code				surface ASME Y14.5		tolerance ASME Y14.5		projection		product family	
ltr ecn no dr date				tolerances unless otherwise specified		X.±0.5		MM		TERMINAL BLOCK	
				angles		X.X±0.3				title	
				X'±1"		X.XX±0.1		scale		TERMINAL BLOCK	
				dr		EVIN ZHONG 041414				RISING CLAMP,180D WIRE INLET,DOUBLE INTERLACE TAIL,0DD POLES	
				enrg		EVIN ZHONG 041414				sheet 2 of 2 size	
				chr		HANKE FENG 041414				KPxx21x000J0G A4	
				appd		SHI JUN 041414				type	
										CUSTOMER Drawing	
sheet index		revision sheet		A 2							

B

B

form: A4mmXLc

1

2

3

4