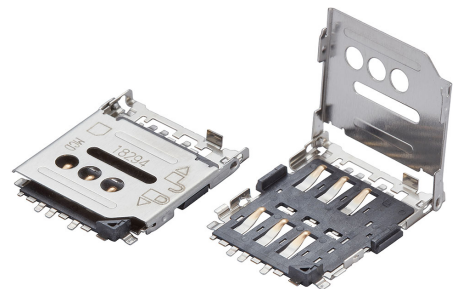




Part Number : [788000001](#)
Product Description : 1.50mm Height Hinged-style micro-SIM Card Socket without Detect Switch, Surface Mount, 6 Circuits, Low-Halogen, Lead-Free
Series Number : 78800
Status : Active
Product Category : Memory / SIM Card Connectors



Documents & Resources


Drawings
[Drawing 788000001_sd.pdf](#)
[Packaging Design Drawing PK-78800-001-001.pdf](#)

3D Models and Design Files
[3D Model 788000001_stp.zip](#)
[3D Model PDF 788000001.pdf](#)

Specifications
[Product Specification PS-78800-001-001.pdf](#)

Product Environment Compliance

Compliance

GADSL/IMDS	Not Relevant
China RoHS	
EU ELV	Not Relevant
Low-Halogen Status	Low-Halogen per IEC 61249-2-21
REACH SVHC	Not Contained per D(2023)3788-DC (14 Jun 2023)
EU RoHS	Compliant per EU 2015/863

[Multiple Part Product Compliance Statements](#)
- Eu RoHS
- REACH SVHC
- Low-Halogen

[Multiple Part Industry Compliance Documents](#)

- IPC 1752A Class C
- IPC 1752A Class D
- Molex Product Compliance Declaration
- IEC-62474
- chemSHERPA (xml)

EU RoHS Certificate of Compliance

Part Details

General

Status	Active
Category	Memory / SIM Card Connectors
Series	78800
Description	1.50mm Height Hinged-style micro-SIM Card Socket without Detect Switch, Surface Mount, 6 Circuits, Low-Halogen, Lead-Free
Product Family	SD and SIM Memory Card Sockets
Product Name	micro-SIM
Style	Push-Pull
UPC	887191293790

Electrical

Current - Maximum per Contact	0.5A
Shielded	Yes
Voltage - Maximum	5V DC

Physical

Card Detection Switch	No
Card Entry Location	Top
Circuits (Loaded)	6
Circuits (maximum)	6
Durability (mating cycles max)	5000
Ejector Button Side	N/A
Material - Contact	Copper Alloy
Material - Plating Mating	Gold
Material - Shell	Stainless Steel

Net Weight	382.447/mg
Packaging Type	Embossed Tape on Reel
PCB Locator	No
PCB Retention	Yes
Pitch - Mating Interface	2.54mm
Temperature Range - Operating	-30° to +85°C
Termination Interface Style	Surface Mount

Solder Process Data

Max-Duration	10
Lead-Free Process Capability	REFLOW
Max-Cycle	2
Max-Temp	260

This document was generated on Sep 05, 2023