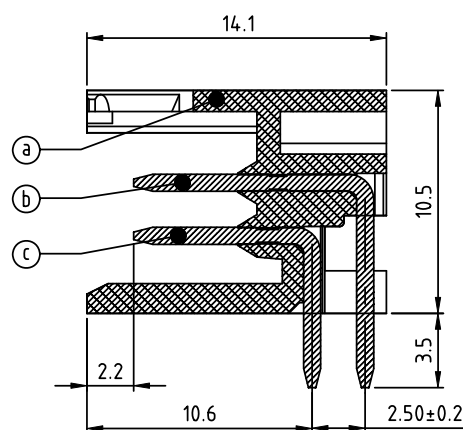
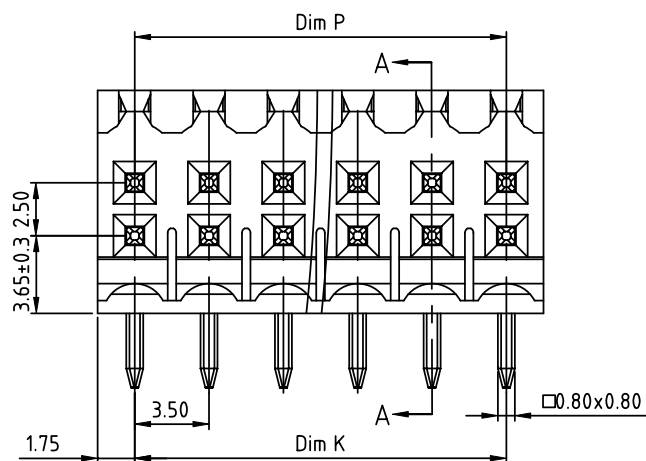
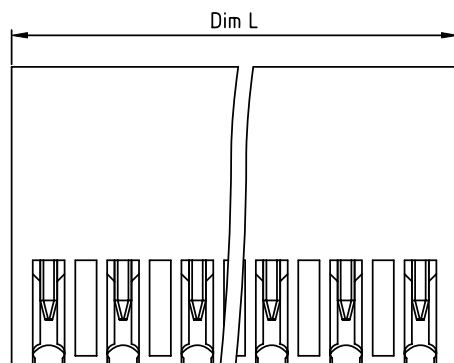


PRODUCT NUMBER

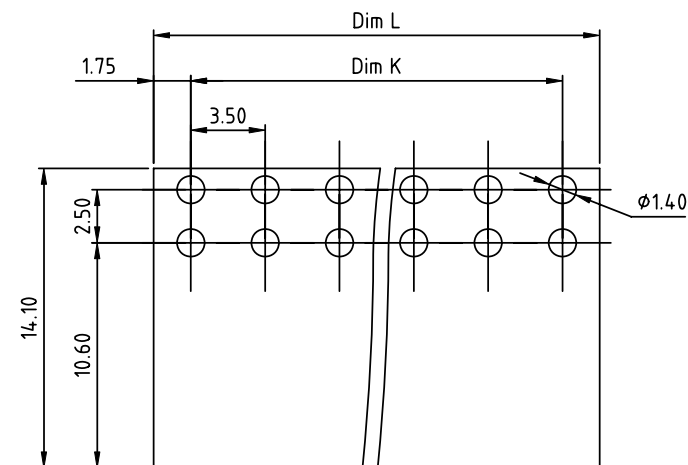
PITCH

VXxx10x100J0G

3.50 mm



SECTION A-A

RECOMMENDED P.C.B LAYOUT  
TOP VIEW

## Material:

- Item① Terminal housing: Thermoplastic(UL94V-0)
- Item② Long pin: Brass, Tin plated
- Item③ Short pin: Brass, Tin plated

## Electrical:

- Voltage rating: 150V
- Current rating: 7 A
- Withstanding Voltage: 1.3KV
- Operating temperature: -40°C to +115°C
- Soldering temperature: 260°C±5°C/5 Sec
- Safety Approval:

Dim L=N/2×3.5
Dim P=(N/2-1)×3.5
Dim K=(N/2-1)×3.5

N=Number of poles

Poles	Dim L	Dim P	Dim K
2x2p-2x6p	±0.15	±0.10	±0.10
2x7p-2x12p	±0.25	±0.20	±0.20
2x13p-2x18p	±0.35	±0.30	±0.30
2x19p-2x24p	±0.40	±0.35	±0.35

PART NO.: VX xx 10 x 1 00J0 G

Solid block

No. of poles

04 2x2 poles

06 2x3 poles

... ..

48 2x24 poles

Color

0 Black (RAL9005)

2 Red (RAL3001/D)

3 Orange(RAL2011/P)

4 Yellow(RAL1018/A)

5 Green(RAL6018/T)

6 Blue (RAL5015/A)

8 Grey(RAL7035/D)

9 White(RAL1102)

C Green(RAL6018/U)

RoHS compliant  
(lead<4%)  
In copper Alloy

mat'l. code				surface	tolerance	projection	product family		
ltr	ecn	no	dr	date	ASME Y14.5 ✓	ASME Y14.5	TERMINAL BLOCK		
					tolerances unless otherwise specified		title		
					angles	X.±0.5	TERMINAL BLOCK		
					flatness	X.X±0.3	PLUGGABLE SOCKET, RIGHT ANGLE, OPEN TYPE		
					X'±1"	X.XX±0.1	scale		
					dr	EVIN ZHONG 050714	dwg no		
					enrg	EVIN ZHONG 050714	sheet 1 of 1 size		
					chr	HANKE FENG 050714	VXxx10x100J0G		
					appd	SHI JUN 050714	A4		
					sheet index	revision	type		
					sheet	A 1	CUSTOMER Drawing		