

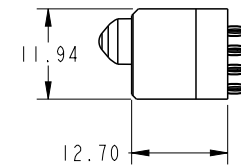
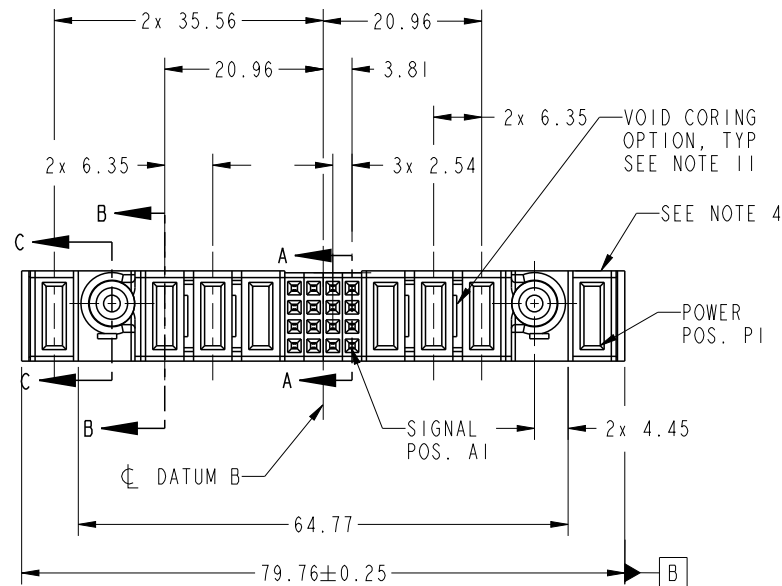


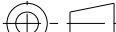
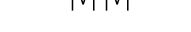




Copyright FCI.

PRODUCT NO.	ROWS			POWER			SIGNAL				POWER				
		P8	E2	P7	P6	P5	4	3	2	1	P4	P3	P2	E1	P1
51940-526-- NOTE: 3	D C B A	<div>PC</div>		<div>PC</div>	<div>PC</div>	<div>PC</div>	<div>F</div>	<div>F</div>	<div>F</div>	<div>F</div>	<div>PF</div>	<div>PF</div>	<div>PF</div>		<div>PF</div>



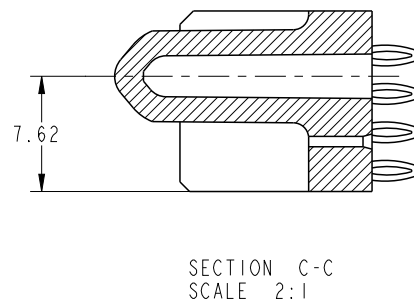
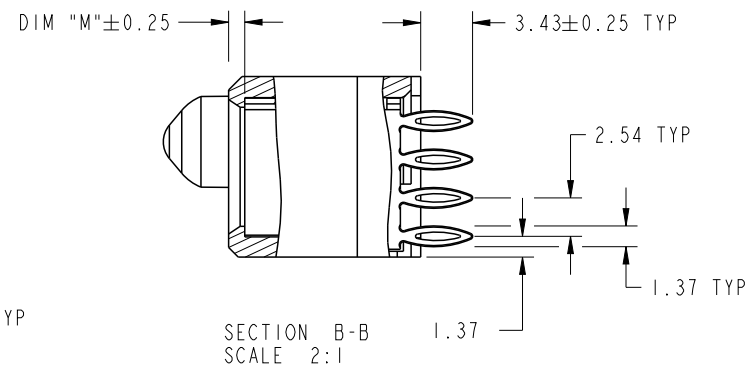
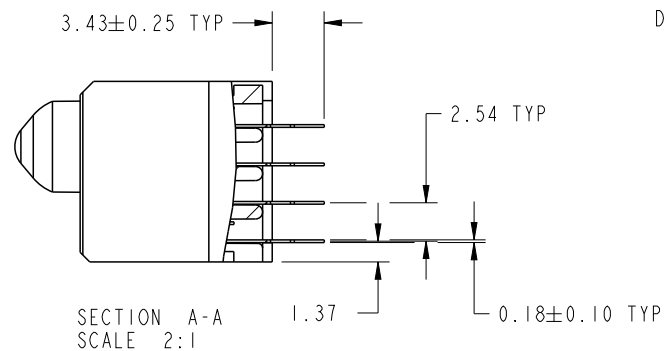
CODE	DIM "M" MATING LENGTH	CONTACT TYPE
PC	[1.07]	POWER
PF	[2.34]	POWER
F	[N/A]	SIGNAL

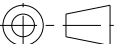


spec ref		*		dr		Ruan MT	2014/03/25	projection 		size	A4	scale	1:1	
tolerance std SEE NOTE	TOLERANCES UNLESS OTHERWISE SPECIFIED			eng		Ruan MT	2014/04/16			ecn no	-			
				chr		-				rel level			Released	
				appr		Pei-Ming Zheng		2014/04/16		product family		PwrBlade		
surface 	linear	0.X	±0.5		title IP + 3P + 16S + 3P + 1P VERTICAL PF RECEPT					dwg no	51940-526			rev A
		0.XX	±0.25											
		0.XXX	±0.1											
	angular	0°	±2°	www.fci.com	cat. no.		*	Product - Customer Drw			sheet 1 of 4			

PrintE File - REV C - 2009-06-09

PRODUCT NUMBER

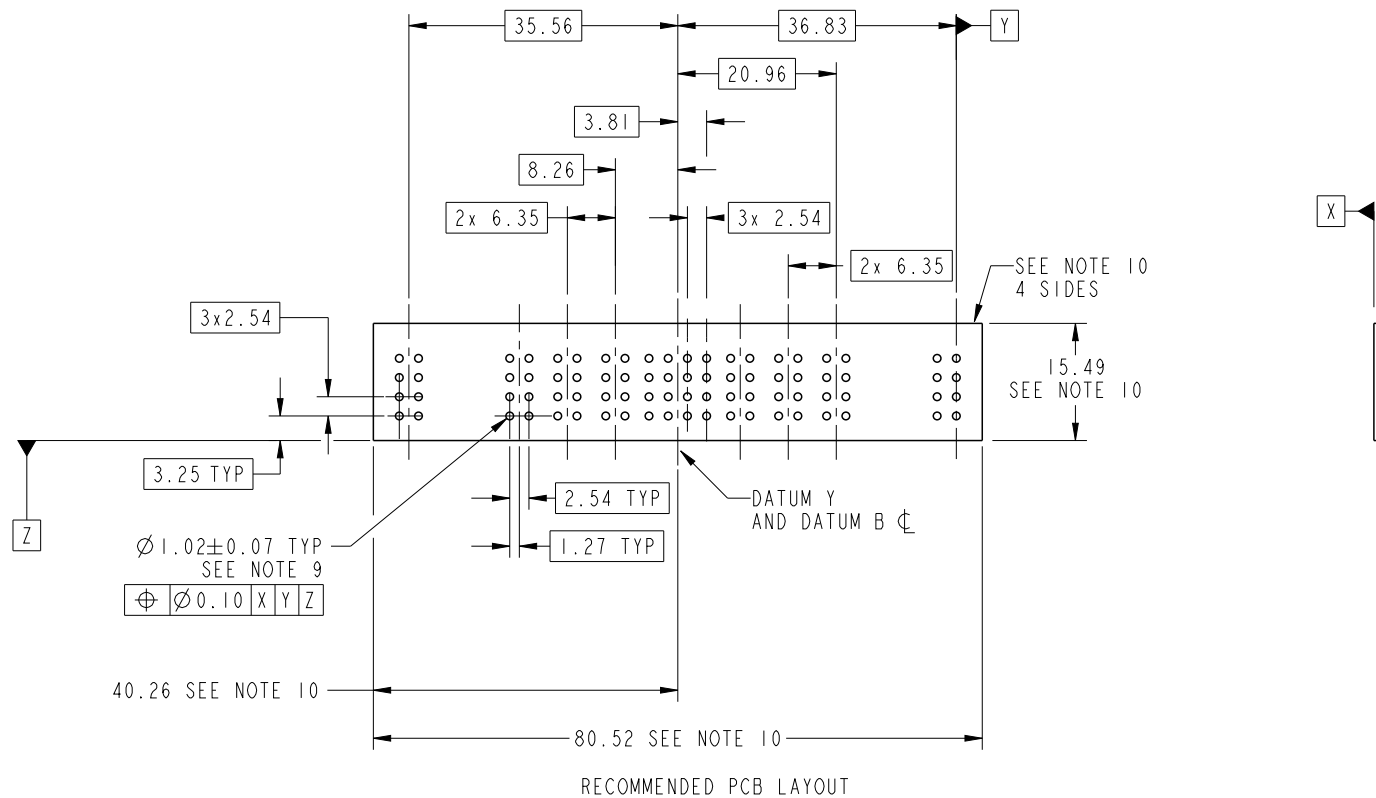
51940-526__
NOTE: 3

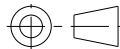
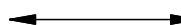



dr	Ruan MT	2014/03/25	<div>projection</div> <div></div>	<div>MM</div> <div></div>	size	A4	scale	1:1
eng	Ruan MT	2014/04/16			ecn no -			
chr	-	-						
appr	Pei-Ming Zheng	2014/04/16	product family		PwrBlade	rel level	Released	
<div></div>		title IP + 3P + 16S + 3P + IP VERTICAL PF RECEPT			dwg no 51940-526		rev A	
www.fci.com		cat. no. *		Product - Customer Drw			sheet 2 of 4	

PRODUCT NUMBER

51940-526--
NOTE: 3



dr	Ruan MT	2014/03/25	projection 	MM 	size	A4	scale	1:1
eng	Ruan MT	2014/04/16			ecn no	-	Released	
chr	-	-			rel level			
appr	Pei-Ming Zheng	2014/04/16	product family PwrBlade					
		title IP + 3P + 16S + 3P + IP VERTICAL PF RECEPT			dwg no	51940-526		rev A
www.fci.com		cat. no. *		Product - Customer Drw			sheet 3 of 4	

PrintE File - REV C - 2009-06-09



Copyright FCI.

PRODUCT NUMBER
51940-526__
NOTE: 3

NOTES:

1. DIMENSIONS AND TOLERANCES ARE IN ACCORDANCE WITH
ASME Y14.5M, 1994 UNLESS OTHERWISE SPECIFIED.

CONNECTOR NOTES:

- 2 HOUSING MATERIAL: UL 94 V-0 GLASS FILLED HIGH-TEMP THERMOPLASTIC
POWER CONTACT MATERIAL: COPPER ALLOY
SIGNAL PIN MATERIAL: COPPER ALLOY
- 3. SEE ITEM 7 & 8 IN PRINT 10064183 FOR PLATING SPEC OF 51940-526 AND 51940-526LF RESPECTIVELY.
- 4 MANUFACTURER'S NAME, DATE CODE AND OPTIONAL P/N TO APPEAR ON
THIS SURFACE. THE MARK CAN BE OMITTED IF THERE IS NOT ENOUGH
SPACE ON THIS SURFACE.
- 5. PRODUCT SPECIFICATION GS-12-149.
APPLICATION SPECIFICATION BUS-20-067.
- 6. PACKAGED IN TRAYS.
- PCB NOTES:
7. ALL HOLE DIAMETERS ARE FINISHED HOLE SIZE.
- 8 MOUNTING HOLES, WHERE APPLICABLE, ARE UNPLATED.
- 9 $\varnothing 1.151 \pm 0.025$ DRILLED HOLES PLATED WITH
0.008 MIN SnPb OR Sn OVER 0.03
TO 0.08 Cu PLATING TO ACHIEVE
 $\varnothing 1.02 \pm 0.07$ HOLE.
- 10 CONNECTOR KEEP-OUT ZONE.
- 11. THE VOID CORING IN BETWEEN POWER MODULES, SIGNAL MODULES AND END MODULES ARE
OPTIONAL AND THE SHAPE MAY BE DIFFERENT FOR OPTIMIZE THE MOLDING PROCESS. THE VOID
CORING WILL NOT EFFECT TO PRODUCT FUNCTION.

dr	Ruan MT	2014/03/25	<div>projection</div> <div></div>	<div>MM</div> <div></div>	size	A4	scale	1:1
eng	Ruan MT	2014/04/16			ecn no	-		
chr	-	-						
appr	Pei-Ming Zheng	2014/04/16	product family		PwrBlade	rel level		Released
	title				IP + 3P + 16S + 3P + 1P		dwg no	
	VERTICAL PF RECEPT				51940-526		rev	
							A	
www.fci.com	cat. no.		*	Product - Customer Drw			sheet 4 of 4	