

GPS65 Series

Single, dual and triple output 65W AC/DC Power Supplies

Our Versatile brand GPS65 family of AC/DC power supplies are fixed switching frequency open frame platforms with single, dual and triple DC output configurations. Outputs range from 3.3v to 48v and total output power from 40 watts to 65 watts (65w with 6CFM fan). The GPS65 family has 90v to 264v universal input and comes in an industry standard 5.0" x 3.0" x 1.51" package.

Operating range is 0 to 50 degrees C and power conversion efficiency is >75%. The GPS65 family of power supplies is an ideal high MTBF, plug and play power solution for wide range of products in the industrial, LAN/WAN, multimedia and general electronics marketplace. An optional cover kit is available. The GPS65 is ideal for 1U (1.75") height and smaller applications where space is a premium and thermal management is key. The GPS65 family is RoHs compliant and our factory is ISO 14001 environmentally approved. World-wide safety standards and approvals apply to include UL, c-UL, NEMKO, IEC60950 and EN60950.



**Versatile
POWER**

Features :

- > Low cost 65W industry standard package
- > EN55022-B. FCC Part 15 level B
- > Safety approvals to IEC60950
- > Universal input
- > 3.3V output model
- > Fixed switching frequency

Model Number	Output	Output Voltage	Output current Max	Fan	Peak
GPS65-1001	V1	3.3V	8.0A	12.0A	11.0A
GPS65-1002	V1	5V	8.0A	12.0A	11.0A
GPS65-1003	V1	12V	3.3A	6.5A	5.4A
GPS65-1004	V1	15V	2.6A	5.0A	4.3A
GPS65-1005	V1	24V	1.6A	3.5A	2.7A
GPS65-1006	V1	48V	0.8A	1.6A	1.3A
GPS65-2000	V1	5V	3.0A	7.5A	6.0A
	V2	12V	2.4A	4.5A	3.0A
GPS65-3000	V1	5V	3.0A	7.5A	6.0A
	V2	12V	2.0A	3.5A	2.5A
	V3	-12V	0.4A	1.0A	0.4A
GPS65-3001	V1	5V	3.0A	7.5A	6.0A
	V2	15V	1.6A	3.0A	2.0A
	V3	-15V	0.3A	1.0A	0.35A
ACC-GPS65- 3 COVER KIT					

MECHANICAL SPECIFICATIONS	
AC Input Connector J1	Housing Molex 09-50-8031 Pins Molex 08-52-0072
Ground Connector J3	Amp 826708-1
DC Output connector J2	Housing Molex 09-50-8001 Pins Molex 08-52-0072
Weight	10 oz (200 g)

ENVIRONMENTAL SPECIFICATIONS		
Operating Temperature	Full Power ¹²³ Derate to 50% load	0 to 50° C 51 to 70° C
Storage Temperature		-40 to 85° C
Cooling	Convection Fan	40W 65W
Relative humidity	Non condensing	5% to 95%, max
MTBF	Demonstrated	> 150,000 hrs
Switching Frequency		65kHz, Fixed

1. Continuous output power limited to 40 W w/ convection cooling
2. Continuous output power is limited to 50W w/ 6CFM fan cooling
3. Peak loading can be applied for 60 secs with <5% duty cycle

All Red Rocket, Inc. EOS power supplies have UL, CSA and Nemko safety compliance and medical versions meet UL60601-1 standards. All our products are RoHs compliant. Visit us at www.redrocketpower.com and contact us at: sales@redrocketpower.com or by calling +1 805-409-0909 today. © 2008, Red Rocket, Inc. EOS brand power supplies and patents are owned exclusively by Red Rocket, Inc. All Rights Reserved.

4EM-08-079

39-DE60-42071-002/A

red rocket
inc.

GPS65 Series

Single, dual and triple output 65W AC/DC Power Supplies

**Versatile
POWER**

OUTPUT SPECIFICATIONS		
Output Power	Convection 6CFM Fan	40W 65W
Total Regulation	Min to full load V1 V2, V3	+3% +20%
Output Voltage Adjust	V1, V2	+5%
Transient Response	25% step at 0.1A/ μ s Voltage deviation Recovery time	5%, max <1ms
OVP	V1 only 5V	135%, +15%
Short Circuit Protection	Auto Recovery	Short Term
Ripple and Noise ¹ Pk-pk	Output <5V Outputs >5V	50mV 360mV
Output Rise Time		<1.0s
Minimum Load	Main Output	10%

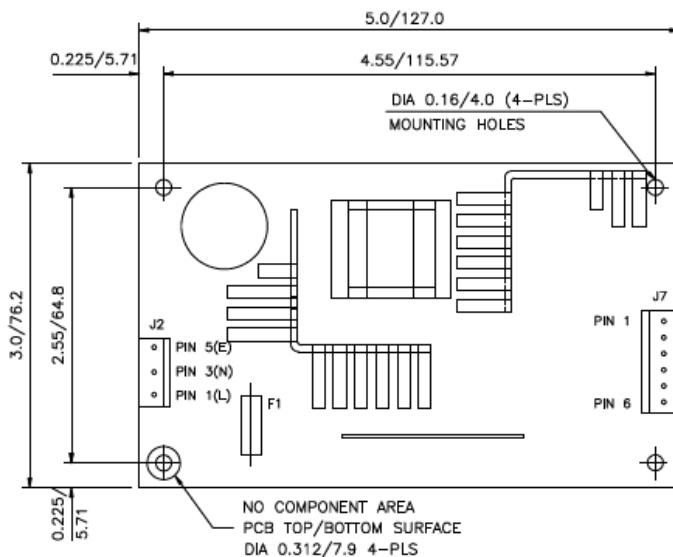
OUTPUT CONNECTOR J2			
	Single	Dual	Triple
Pin 1	V1	V2	V2
Pin 2	V1	V1	V1
Pin 3	V1	V1	V1
Pin 4	Return	Return	Return
Pin 5	Return	Return	Return
Pin 6	Return	NC	V3

EMC AND SAFETY SPECIFICATIONS	
CE Mark	Complies with the LVD
EMC	EN5022-B, CISPR22-B, FCC Part 15 Class B,
Agency Approvals	NEMKO, UL, c-UL
Safety Standards	IEC60950, EN60950, UL1950
Safety file numbers	NEMKO: P02101373 UL: E136019
Isolation Voltage	Input to output 3000VAC

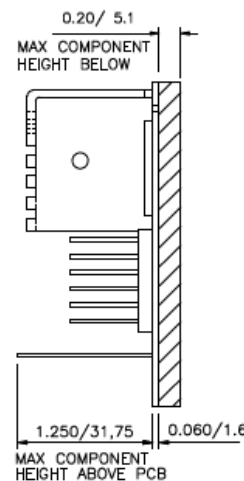
INPUT SPECIFICATIONS		
Input Voltage	Universal	90-264 VAC 120-370 VDC
Efficiency		75%
Input Frequency		47-63 Hz
Input Current	Full Load at low line	1.5 Arms, max
Inrush Current	High Line, cold start	32A, max
Leakage Current		<250 μ A

INPUT CONNECTOR J1	
Pin 1	Live
Pin 2	NC
Pin 3	Neutral
Pin 4	NC
Pin 5	Ground

1- Ripple and noise measured at J2 with 10 μ F tantalum and 0.1 μ ceramic shunt caps



MECHANICAL OUTLINE DIMENSIONS
MODEL :GPS65SERIES
DIMENSION UNITS : INCH/MM
GEN TOLERANCE: +/-0.02"/0.5



All Red Rocket, Inc. EOS power supplies have UL, CSA and Nemko safety compliance and medical versions meet UL60601-1 standards. All our products are RoHs compliant. Visit us at www.redrocketpower.com and contact us at: sales@redrocketpower.com or by calling +1 805-409-0909 today. © 2008, Red Rocket, Inc. EOS brand power supplies and patents are owned exclusively by Red Rocket, Inc. All Rights Reserved.

4EM-08-079

39-DE60-42071-002/A

red rocket
inc.