



PCB-to-wire connectors

2.8 mm terminals

8 & 16 way straight pin headers 2.8 x 0.8 mm

Features

- 8-16 positions available
- Double row 5 x 5 mm staggered pitch
- Moulded-in connector
- Post-tinned tab contact
- Mechanical polarization
- Several colour codings available



Performance characteristics

- Temperature range:
from -40°C to +105°C
- Connector mating force: < 80 N

Construction

- Housing material: PA
- Tab material and plating: CuZn/Sn

Connector compatibility

- Matable with:
RT94 female connectors

Part Numbers	No. of position	Terminal size	Colour
RT94BS08BK*T	8	2.8 x 0.8 mm	Black
RT94BS08WH*T	8	2.8 x 0.8 mm	White
RT94BS08VL*T	8	2.8 x 0.8 mm	Violet
RT94BS08BN*T	8	2.8 x 0.8 mm	Brown
RT94BS08YE*T	8	2.8 x 0.8 mm	Yellow
RT94BS08GY*T	8	2.8 x 0.8 mm	Grey
RT94BS08RD*T	8	2.8 x 0.8 mm	Red
RT94BS16BK*T	16	2.8 x 0.8 mm	Black
RT94BS16GN*T	16	2.8 x 0.8 mm	Green
RT94BS16BN*T	16	2.8 x 0.8 mm	Brown
RT94BS16DGN*T	16	2.8 x 0.8 mm	Dark green

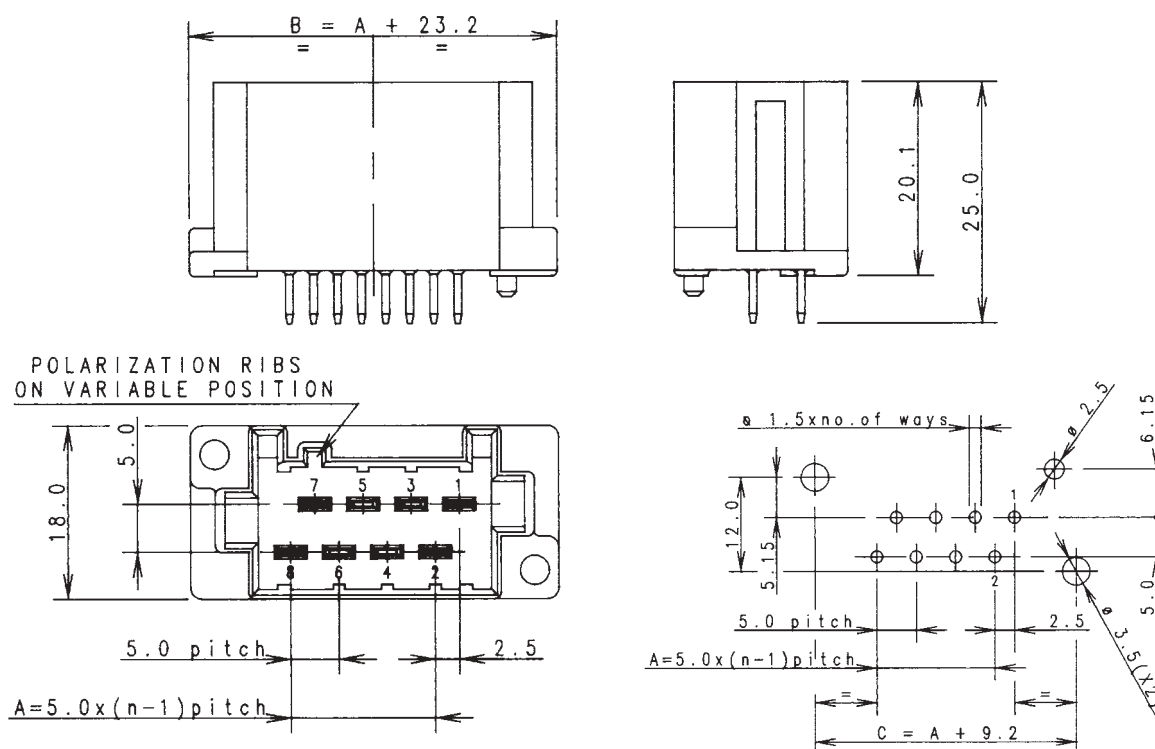
PCB-to-wire connectors

2.8 mm terminals

2.8 x 0.8 mm straight pin headers

Dimensional characteristics

Straight pin header



Codings

