



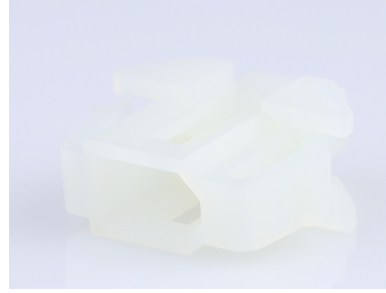
**Part Number :** [1501761020](#)

**Product Description :** Standard .062"+ Plug Housing, Single Row, with Panel Mount Latch, 2 Circuits

**Series Number :** 150176

**Status :** Active

**Product Category :** Connector Housings



---

## Documents & Resources

### Drawings

[Drawing 1501761020\\_sd.pdf](#)

### 3D Models and Design Files

[3D Model 1501761020\\_stp.zip](#)

### Specifications

[Application Specification 1501760001-AS-000.pdf](#)

[Packaging Specification PK-150176-001-001.pdf](#)

[Product Specification 1501760001-PS-000.pdf](#)

[Test Summary 1501760001-TS-000.pdf](#)

---

## Product Environment Compliance

### Compliance

GADSL/IMDS	Not Relevant
China RoHS	
EU ELV	Compliant per 2000/53/EC
Low-Halogen Status	Low-Halogen per IEC 61249-2-21
REACH SVHC	Not Contained per D(2024)4144-DC (27 June 2024)
EU RoHS	Compliant per EU 2015/863

### Multiple Part Product Compliance Statements

- Eu RoHS
- REACH SVHC
- Low-Halogen

### Multiple Part Industry Compliance Documents

- IPC 1752A Class C

- IPC 1752A Class D
- Molex Product Compliance Declaration
- IEC-62474
- chemSHERPA (xml)

EU RoHS Certificate of Compliance

---

## Part Details

### General

Status	Active
Category	Connector Housings
Series	150176
Description	Standard .062"+ Plug Housing, Single Row, with Panel Mount Latch, 2 Circuits
Application	Power, Wire-to-Wire
Product Family	Standard .062"+ and Standard .062" Pin and Socket Connector Systems
Product Name	Standard .062"+
UPC	889056490252

### Agency

UL	E29179
----	--------

### Physical

Circuits (maximum)	2
Color - Resin	Natural
Flammability	94V-2
Gender	Plug
Glow-Wire Capable	No
Keying to Mating Part	None
Lock to Mating Part	Yes
Material - Resin	Nylon
Net Weight	1.242/g
Number of Rows	1
Packaging Type	Bag
Panel Mount	Yes

Pitch - Mating Interface	3.68mm
Pitch - Termination Interface	3.68mm
Polarized to Mating Part	Yes
Stackable	No
Temperature Range - Operating	-40° to +105°C

---

## Mates With / Use With

### Mates with Part(s)

Description	Part Number
Standard .062"+ Single Row Receptacle Housings	<u>150178</u>

### Use with Part(s)

Description	Part Number
Standard .062"+ Male Terminals	<u>150180</u>

---

This document was generated on Oct 01, 2024