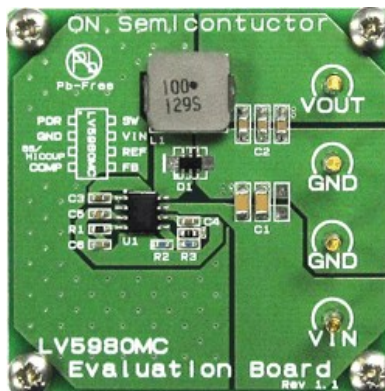




LV5980MCGEVB: 1-Channel DC-DC Converter Evaluation Board

LV5980MC is 1ch DCDC converter with built-in power Pch MOSFET. The recommended operating range is 4.5V to 23V. The maximum current is 3A. The operating current is about 63μA, and low power consumption is achieved.



Evaluation/Development Tool Information

Product	Status	Compliance	Short Description	Parts Used	Action
LV5980MCGEVB	Active	Pb-free	1-Channel DC-DC Converter Evaluation Board	LV5980MC-AH	» Contact » Local Sales Office » Inventory

Technical Documents

Type	Document Title	Document ID/Size	Rev
Eval Board: BOM	LV5980MCGEVB Bill of Materials ROHS Compliant	LV5980MCGEVB_BOM_ROHS.PDF - 21 KB	0
Eval Board: Gerber	LV5980MCGEVB Gerber Layout Files (Zip Format)	LV5980MCGEVB_GERBER.ZIP - 216.0 KB	0
Eval Board: Schematic	LV5980MCGEVB Schematic	LV5980MCGEVB_SCHEMATIC.PDF - 53 KB	1
Eval Board: Test Procedure	LV5980MCGEVB Test Procedure	LV5980MCGEVB_TEST_PROCEDURE.PDF - 1137 KB	0

Previously Viewed Products

Select Product... [Go](#)
[Clear List](#)

Design Support

- [Technical Documentation](#)
- [Design Resources & Documents](#)
- [Technical Support](#)
- [Sales Support](#)

