

6

5

4

3

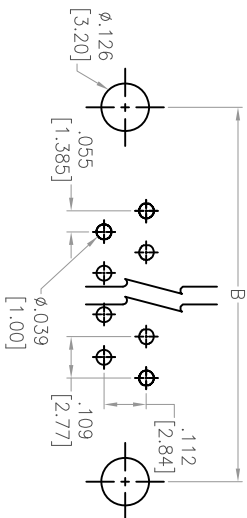
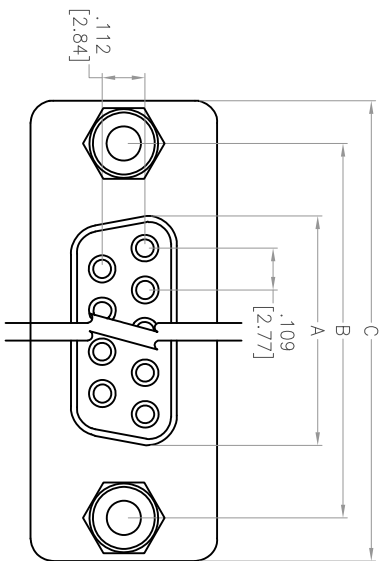
2

1

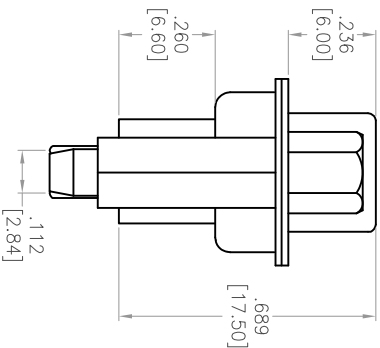
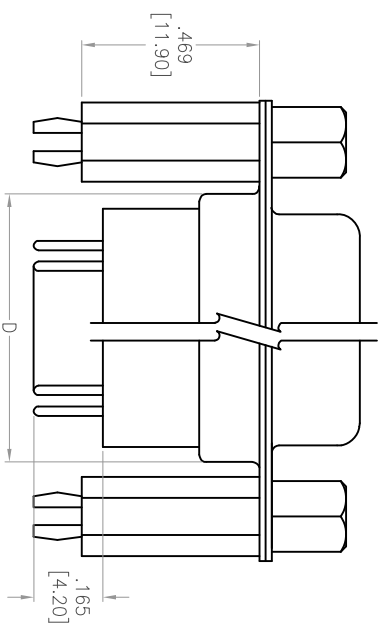
Rev	AWO #	Description	Date	Appr
-		RELEASED	9/19/13	

APPROVED: \_\_\_\_\_

DATE: \_\_\_\_\_ TITLE: \_\_\_\_\_



RECOMMENDED PCB LAYOUT



## SPECIFICATIONS:

## Material:

Insulator: Thermoplastic, rated UL 94V-0

Insulator color: Black

Contacts: Copper Alloy

Shell: Steel

Hardware: Copper alloy

## Plating:

Gold flash over Nickel underplate overall

## Electrical:

Operating voltage: 250 VAC max

Current rating: 3 Amps max

Contact resistance: 15 mohms max

Insulation resistance: 3,000 Mohms min

Dielectric withstanding voltage: 1,000 VAC for 1 minute

## Temperature Rating:

Operating temperature: -55°C to +105°C

## Environmental:

Lead free, RoHS compliant

DXXX	NO. OF CONTACTS	DIMENSIONS			
		A	B	C	D
DE09	9	.642 [16.30]	.984 [25.00]	1.213 [30.80]	.756 [19.20]
DA15	15	.969 [24.60]	1.311 [33.30]	1.543 [39.20]	1.091 [27.70]
DB25	25	1.508 [38.30]	1.854 [47.10]	2.091 [53.10]	1.618 [41.10]
DC37	37	2.157 [54.80]	2.500 [63.50]	2.732 [69.40]	2.256 [57.30]

**ADAM TECH**

909 Rahway Avenue, Union, NJ 07083

Phone: 908-687-5000 Fax: 908-687-5710

D-SUB SOCKET, HIGH PROFILE

RIVETED #4-40 STANDOFFS W/BOARDLOCKS

UNLESS OTHERWISE SPECIFIED ALL DIMENSIONS ARE INCHES [MM] TOLERANCES: EXCEPT AS NOTED INCHES .X ± .10 ØXX ± .10 .XX ± .020 ØXXX ± .015 .XXX ± .015 ØXXXX ± .010		DATE	
DRAWN	SS	9/19/13	
CHECKED			
APPROVED			
TITLE		SIZE	PART NO.
D-SUB SOCKET, HIGH PROFILE		X	DXXX-SE-1-BL-JS
RIVETED #4-40 STANDOFFS W/BOARDLOCKS		REV.	-
REF: S00013T		SCALE: NTS	SHEET 1 OF 1

