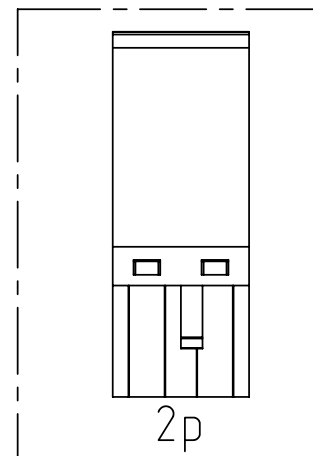
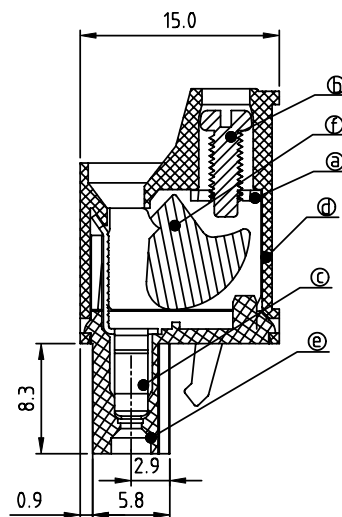
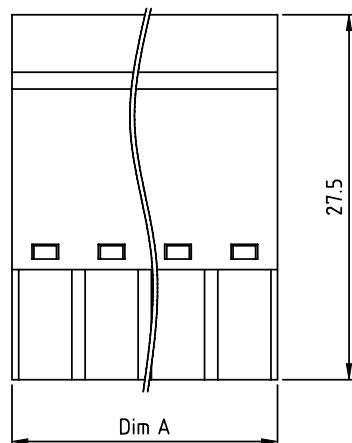
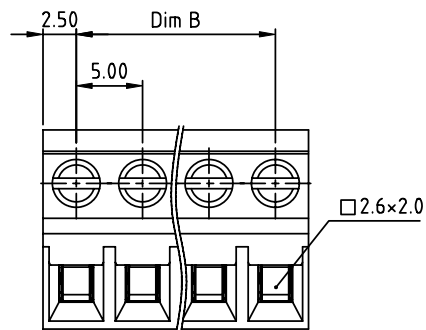


PRODUCT NUMBER	PITCH
VMxx75x000J0G	5.00 mm



Material:

- Item a Clamp: Steel zinc plated.
- Item b Terminal screw: Steel Zinc plating "-" slot type
- Item c Female contact: High conductivity copper Tin plated
- Item d Terminal (top body): Thermoplastic (UL94V-0)
- Item e Terminal (bottom body): Thermoplastic (UL94V-0)
- Item f Clampage: Steel Zinc plated

Electrical cULus/TUV

- Voltage rating: 300VAC/300VAC
- Current rating: 20A/20A
- Wire range: 0.34-2.5mm²
- Solid wire(AWG): 12-22
- Stranded wire(AWG): 12-22
- Torque: 3.5Lb-In / 0.4Nm
- Screw: M2.5
- Wire strip length: 8-9mm
- Withstanding Voltage: 1.6KV/2.5KV
- Operating temperature: -40°C to +115°C
- Safety approval: us

PART NO.: VM xx 75 x 0 00J0 G

N=NUMBER OF POLES

Dim A=(N-1)×5.00+5.00
Dim B=(N-1)×5.00

POLES	Tolerance
2P-6P	±0.20
7P-12P	±0.25
13P-18P	±0.30
19P-24P	±0.40

Solid block	No. of poles	Color	RoHS compliant (lead<4%) In copper Alloy
0	2	Black (RAL9005)	
2	3	Red (RAL3001/D)	
3	4	Orange(RAL2011/P)	
4	5	Yellow(RAL1018/A)	
5	6	Green(RAL6018/T)	
6	8	Blue (RAL5015/A)	
8	9	Grey(RAL7035/D)	
9	9	White(RAL1102)	
C	24	Green(RAL6018/U)	

mat'l. code				surface ASME Y14.5	tolerance ASME Y14.5	projection 	product family TERMINAL BLOCK			
ltr	ecn	no	dr	date	tolerances unless otherwise specified	angles 	title TERMINAL BLOCK			
						X.±0.5	PLUGGABLE PLUG, WITHOUT FLANGE			
						X.X±0.3	scale MM			
						X'±1"	scale			
					dr	EVIN ZHONG 042114				
					enr	EVIN ZHONG 042114				
					chr	HANKE FENG 042114				
					appd	SHI JUN 042114	type CUSTOMER Drawing			
sheet index	revision sheet	A	1							