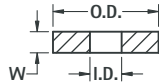




FLAT WASHERS - NYLON & FIBRE



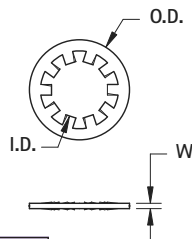
MATERIAL:

Fibre: Commercial Grade per ASTM D710 Nylon: Grade 6/6 per ASTM D4066

MATERIAL	I.D.	O.D.	W THICKNESS		
			.032 (.81)	.047 (1.19)	.062 (1.57)
			CAT. NO.	CAT. NO.	CAT. NO.
FIBRE	.098 (2.49) #2	.187 (4.8)	3111	3148	3366
		.250 (6.4)	3112	3149	3367
		.312 (7.9)	3113	3150	3194
NYLON	.098 (2.49) #2	.187 (4.8)	3114	3151	3356
		.250 (6.4)	3347*	3152	3357*
		.312 (7.9)	3115	3153	3195
FIBRE	.120 (3.05) #4	.250 (6.4)	3116	3154	3368
		.312 (7.9)	348	3155	3196
		.375 (9.5)	3117	3156	3197
NYLON	.120 (3.05) #4	.250 (6.4)	3348	345	3358
		.312 (7.9)	3359	3157	3198
		.375 (9.5)	3118	3158	3200
FIBRE	.140 (3.56) #6	.250 (6.4)	3119	3159	3369
		.312 (7.9)	3120	3160	3370
		.375 (9.5)	3121	3161	3201
NYLON	.140 (3.56) #6	.250 (6.4)	3122	3162	3360
		.312 (7.9)	3349	346	3361
		.375 (9.5)	3123	3163	3202
FIBRE	.171 (4.34) #8	.312 (7.9)	3124	3164	3203
		.375 (9.5)	3125	3165	3372
		.437 (11.1)	3126	3166	3204
NYLON	.171 (4.34) #8	.312 (7.9)	3127	3167	3205
		.375 (9.5)	3350	3168	3363
		.437 (11.1)	3128	3169	3206
FIBRE	.196 (4.98) #10	.312 (7.9)	349	3170	3207
		.375 (9.5)	3129	3171	3208
		.437 (11.1)	3130	3172	3209
NYLON	.196 (4.98) #10	.500 (12.7)	3131	3173	3210
		.312 (7.9)	3364	3174	3211
		.375 (9.5)	3352	3175	3212
FIBRE	.260 (6.60) 1/4"	.437 (11.1)	3132	3176	3213
		.500 (12.7)	3133	3177	3214
		.437 (11.1)	3134	3178	3215
NYLON	.260 (6.60) 1/4"	.500 (12.7)	3135	3179	3373
		.625 (15.9)	3136	3180	3216
		.750 (19.1)	3137	3181	3217
FIBRE	.385 (9.65) 3/8"	.437 (11.1)	3138	3182	3218
		.500 (12.7)	3353	3183	3365
		.625 (15.9)	3139	3184	3219
NYLON	.385 (9.65) 3/8"	.750 (19.1)	3140	3185	3220
		1.000 (25.4)	3141	3186	3221
		.500 (12.7)	3142	3187	3222
FIBRE	.750 (19.1) 3/8"	.750 (19.1)	3143	3188	3223
		1.000 (25.4)	3144	3189	3224
		.500 (12.7)	3145	3190	3225
NYLON	.750 (19.1) 3/8"	.625 (15.9)	3354	3191	3226
		.750 (19.1)	3146	3192	3227
		1.000 (25.4)	3147	3193	3228

* .090 (2.3) I.D.

INTERNAL TOOTH WASHERS

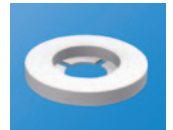
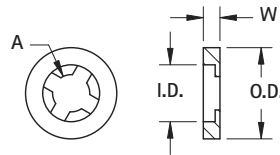


MATERIAL: Phosphor Bronze - Nickel Plate

CAT. NO.	I.D.	O.D.	W	SCREW SIZE
11360-4	.120 (3.1)	.265 (6.7)	.017 (.43)	#4 (M3)
11362-5	.226 (5.7)	.402 (10.2)	.020 (.51)	#12 (M5)
4691	.261 (6.6)	.469 (11.9)	.025 (.63)	1/4" (M6)

NYLON RETAINING WASHERS

Retaining Washers are similar to our standard washers, but with a specially configured ID designed to grip the screw shank. The washer remains attached to the screw, for quick, easy assembly.

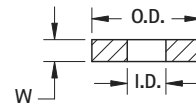


MATERIAL:

Nylon, 6/6 UL Rated 94V-0

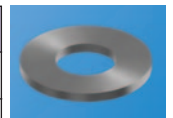
W THICKNESS		I.D.	A	O.D.	SCREW SIZE
.032 (0.81)	.062 (1.57)				
CAT. NO.	CAT. NO.				
2244	2284	.115 (2.9)	.078 (1.9)	.203 (5.2)	#2 (M2)
2245	2285	.156 (3.9)	.102 (2.6)	.256 (6.7)	#4
2246	2286	.198 (5.0)	.128 (3.3)	.328 (8.3)	#6 (M3.5)
2247	2287	.235 (5.9)	.152 (3.8)	.390 (9.9)	#8 (M4)
2248	—	.235 (5.9)	.135 (3.4)	.390 (9.9)	#8 (M4)
2249	—	.227 (7.0)	.177 (4.5)	.453 (11.5)	#10
—	2290	.227 (7.0)	.177 (4.5)	.500 (12.7)	#10
—	2291	.227 (7.0)	.177 (4.5)	.630 (16.0)	#10
2252	2292	.375 (9.5)	.234 (5.9)	.593 (15.1)	#1/4 (M6)
2253	2293	.564 (14.3)	.350 (8.9)	.890 (22.6)	#3/8

STEEL WASHERS

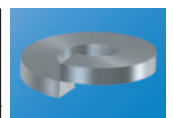


MATERIAL: Steel, Zinc Plate

FLAT CAT. NO.	I.D.	O.D.	W	SCREW SIZE
4692	.128 (3.3)	.281 (7.1)	.025 (.63)	#4 (M3)
7235-1	.120 (3.1)	.220 (5.6)	.032 (.81)	
4699	.147 (3.7)	.373 (9.5)	.031 (.80)	#6 (M3.5)
4703	.200 (5.1)	.436 (11.1)	.033 (.84)	#10 (M4)
1719-1	.391 (9.9)	1.500 (38.1)	.094 (2.4)	3/8"



LOCK CAT. NO.	I.D.	O.D.	W	SCREW SIZE
4693	.117 (3.0)	.205 (5.2)	.031 (.78)	#4 (M3)
7235-2	.117 (3.0)	.197 (5.0)	.025 (.63)	
4700	.144 (3.7)	.250 (6.4)	.033 (.84)	#6 (M3.5)
1477	.195 (5.0)	.320 (8.1)	.047 (1.2)	#10 (M4)
1476	.256 (6.5)	.479 (12.2)	.074 (1.9)	1/4" (M6)
1485	.321 (8.2)	.586 (14.8)	.078 (2.0)	5/16" (M8)



HEX MACHINE NUTS

MATERIAL: Nylon 6/6 UL Rated 94V-2 Steel, Zinc Plate



IMPERIAL			
STEEL CAT. NO.	NYLON CAT. NO.	HEX	THREAD
4694	—	.187 (4.7)	4-40
9600	9605	.250 (6.4)	
4701	—	.250 (6.4)	6-32
9602	9606	.312 (7.9)	
9603	—	.250 (6.4)	8-32
9604	9607	.312 (7.9)	
4705	9608	.375 (9.5)	10-32
4713	—	.430 (10.9)	.250-28
4716	—	.500 (12.7)	.312-24

METRIC			
STEEL CAT. NO.	NYLON CAT. NO.	HEX	THREAD
4707	4687	5.00 mm	M2.5
4708	4688	5.50 mm	M3
4709	4689	7.00 mm	M4

