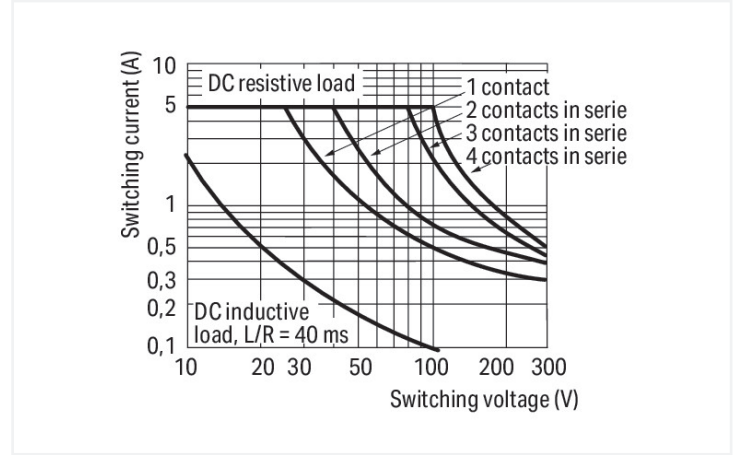
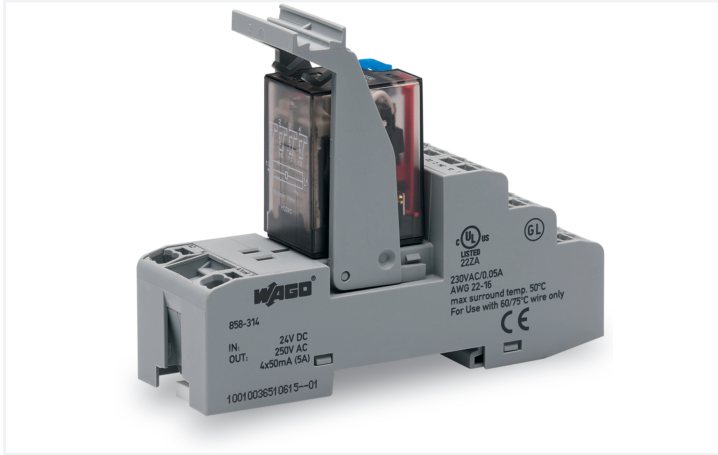


Data Sheet | Item Number: 858-314

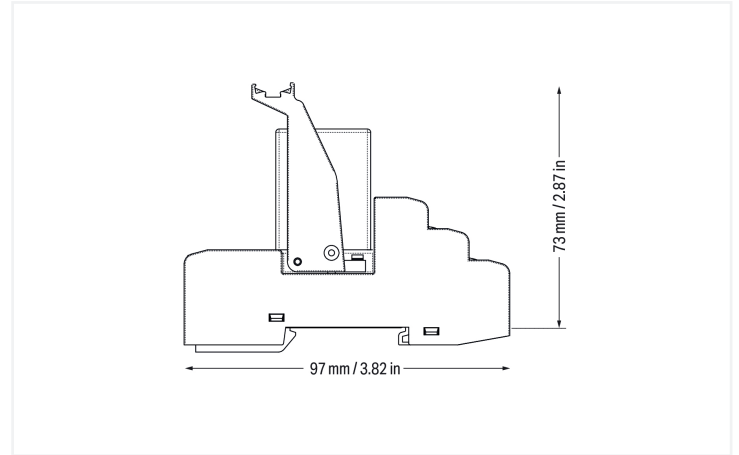
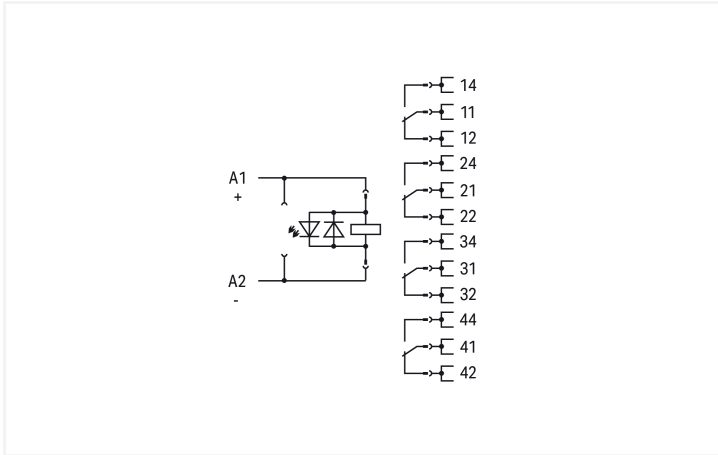
Relay module; Nominal input voltage: 24 VDC; 4 changeover contacts; Limiting continuous current: 5 A; with gold contacts; with manual operation; Red status indicator; Module width: 31 mm; 1,50 mm²



<https://www.wago.com/858-314>



DC load limit curve



Notes

Note To prevent damaging the gold layer, 30 VDC switching voltages and 50 mA currents must not be exceeded. Higher switching power eventually evaporates the gold layer. The resulting deposits in the housing may reduce service life.

Technical data

| Control circuit | |
|--------------------------------|---------------|
| Nominal input voltage U_N | 24 VDC |
| Input voltage range | -20 ... +10 % |
| Nominal input current at U_N | 37 mA |

| Load circuit | |
|--|---|
| Number of changeover/switchover contacts | 4 |
| Contact material (relay) | AgCe + Au |
| Limiting continuous current | 5 A |
| Inrush current (resistive) max. | (AC) 15 A / 4 s |
| Switching Voltage, Max. | 250 VAC |
| Switching power (resistive) max. | AC 1250 VA; DC (see load limit curve) |
| Switching capacity | AC-15: 1 A / 240 VAC; DC-13: 2 A / 24 VDC |
| Recommended minimum load | 5 V / 1 mA / 50 mW |

Load circuit

| | |
|---|--|
| Pull-in time (typ.) | 25 ms |
| Drop-out time (typ.) | 25 ms |
| Bounce time (typ.) | 4 ms |
| Electrical life (NO; resistive load; 23 °C) | 100 x 10 ³ switching operations |
| Mechanical life | 20 x 10 ⁶ switching operations |

Signaling

| | |
|------------------|-----------------------|
| Status indicator | Red LED Mechanical |
|------------------|-----------------------|

Safety and protection

| | |
|--|--|
| Rated Voltage | 300 V |
| Rated impulse withstand voltage | 2.5 kV |
| Overtoltage category | II |
| Pollution degree | 2 |
| Dielectric strength (control/load circuit) (AC, 1 min) | 1.5 kVrms |
| Dielectric strength (open contact) (AC, 1 min) | 1 kVrms |
| Dielectric strength (load/load circuit) (AC, 1 min) | 1.5 kVrms |
| Insulation type (control/load circuit) | Basic insulation |
| Insulation type (open contact) | Functional insulation |
| Insulation type (load/load circuit) | Basic insulation |
| Insulation type (adjacent devices) | Reinforced insulation (safe isolation) |
| Protection type | IP20 |

Connection Data

| | |
|--------------------------------|--|
| Connection technology | Push-in CAGE CLAMP® |
| Solid conductor | 0.34 ... 1.5 mm ² / 22 ... 16 AWG |
| Fine-stranded conductor | 0.34 ... 1.5 mm ² / 22 ... 16 AWG |
| Strip length | 9 ... 10 mm / 0.35 ... 0.39 inches |
| Note (conductor cross-section) | 2 x 0.34 ... 2 x 1.5 mm ² / 1 x 2.5 mm ² / 2 x 22 ... 2 x 16 AWG |

Physical data

| | |
|-----------------------------------|----------------------|
| Width | 31 mm / 1.22 inches |
| Height | 97 mm / 3.819 inches |
| Depth from upper-edge of DIN-rail | 73 mm / 2.874 inches |

Mechanical data

| | |
|-------------------|---------------------------------------|
| Mounting type | DIN-35 rail |
| Mounting position | horizontal (standing/lying); vertical |

Material data

| | |
|----------------------|--|
| Note (material data) | Information on material specifications can be found here |
| Fire load | 1.254 MJ |
| Weight | 96.6 g |

Environmental requirements

| | |
|---|--|
| Ambient temperature (operation at U_N) | -25 ... +70 °C |
| Ambient temperature (storage) | -40 ... +70 °C |
| Processing temperature | -25 ... +50 °C |
| Temperature range of connection cable | $\geq (T_{\text{ambient}} + 25 \text{ K})$ |
| Relative humidity | 5 ... 85 % |
| Operating altitude (max.) | 2000 m |

Standards and Specifications

| | |
|--------------------------|--|
| Standards/specifications | EN 61010-2-201 EN 61810-1 EN 61373 UL 508 (max. 50 °C) DNV |
|--------------------------|--|

Basic relay

| | |
|------------------|---------|
| WAGO Basic Relay | 858-152 |
|------------------|---------|

Commercial data

| | |
|-----------------------|--------------------------|
| Product Group | 6 (INTERFACE ELECTRONIC) |
| PU (SPU) | 5 pcs |
| Packaging type | Box |
| Country of origin | DE |
| GTIN | 4055143567893 |
| Customs tariff number | 85364900990 |

Product Classification

| | |
|-------------|----------------------|
| UNSPSC | 39122334 |
| eCl@ss 10.0 | 27-37-16-01 |
| eCl@ss 9.0 | 27-37-16-01 |
| ETIM 9.0 | EC001437 |
| ETIM 10.0 | EC001437 |
| ECCN | NO US CLASSIFICATION |

Environmental Product Compliance

| | |
|------------------------|-------------------------|
| RoHS Compliance Status | Compliant, No Exemption |
|------------------------|-------------------------|

Approvals / Certificates

General approvals



| Approval | Standard | Certificate Name |
|----------------------------|----------------|------------------|
| EAC GZO Almaty Standart | TP TC 004/2011 | EAC CoC 03084 |

Declarations of conformity and manufacturer's declarations

| Approval | Standard | Certificate Name |
|---|----------|------------------|
| EU-Declaration of Confor- mity WAGO GmbH & Co. KG | - | - |
| UK-Declaration of Confor- mity WAGO GmbH & Co. KG | - | - |

Approvals for marine applications



| Approval | Standard | Certificate Name |
|-------------------------|------------------------|------------------|
| DNV DNV Germany GmbH | DNV-CG-0339, Aug. 2021 | TAA00001D1 |

Downloads

Environmental Product Compliance

Compliance Search

| | |
|--|-------------------|
| Environmental Product Compliance 858-314 | ↓ |
|--|-------------------|

Documentation

| Bid Text | | | |
|----------|------------|------------------|-------------------|
| 858-314 | 19.02.2019 | xml 5.11 KB | ↓ |
| 858-314 | 20.02.2019 | docx 17.12 KB | ↓ |

| Instruction Leaflet | | | |
|---------------------------------|-----------------------|-------------------|-------------------|
| Stecksocket für Elementarrelais | V 2.0.0 25.01.2022 | pdf 2130.02 KB | ↓ |

CAD/CAE-Data

| CAD data | |
|----------------------|-------------------|
| 2D/3D Models 858-314 | ↓ |

| CAE data | |
|---------------------------|-------------------|
| EPLAN Data Portal 858-314 | ↓ |
| WSCAD Universe 858-314 | ↓ |
| ZUKEN Portal 858-314 | ↓ |

1 Compatible Products

1.1 Optional Accessories

1.1.1 Basic relay

1.1.1.1 Basic relay



Item No.: 858-152

Basic relay; Nominal input voltage: 24 VDC; 4 changeover contacts; Limiting continuous current: 5 A; with gold contacts; with manual operation; Module width: 22 mm; Module height: 35mm

1.1.2 Ferrule

1.1.2.1 Ferrule



Item No.: 216-241

Ferrule; Sleeve for 0.5 mm² / 20 AWG; insulated; electro-tin plated; electrolytic copper; gastight crimped; acc. to DIN 46228, Part 4/09.90; white



Item No.: 216-242

Ferrule; Sleeve for 0.75 mm² / 18 AWG; insulated; electro-tin plated; electrolytic copper; gastight crimped; acc. to DIN 46228, Part 4/09.90; gray



Item No.: 216-243

Ferrule; Sleeve for 1 mm² / AWG 18; insulated; electro-tin plated; electrolytic copper; gastight crimped; acc. to DIN 46228, Part 4/09.90; red



Item No.: 216-244

Ferrule; Sleeve for 1.5 mm² / AWG 16; insulated; electro-tin plated; electrolytic copper; gastight crimped; acc. to DIN 46228, Part 4/09.90; black

1.1.3 Indicators

1.1.3.1 Status indication



Item No.: 788-120

Accessories for relay modules; Operation status indicator: red; Nominal operating voltage: 24 VDC

1.1.4 Installation

1.1.4.1 Ejector



Item No.: 858-110

Ejector; for basic relays 25 mm x 35 mm

1.1.5 Jumper

1.1.5.1 Jumper



Item No.: 858-402

Jumper; 2-way; insulated; light blue

1.1.6 Marking

1.1.6.1 Double marker carrier



Item No.: 209-128

Adaptor; gray

1.1.6.2 Group marker carrier



Item No.: 249-105
Group marker carrier; gray

Item No.: 209-145
Group marker carrier; white

1.1.6.3 Marker



Item No.: 209-183
Marker; white



Item No.: 793-5501
WMB marking card; as card; for terminal block width 5 - 17.5 mm; stretchable 5 - 5.2 mm; plain; snap-on type; white



Item No.: 793-502
WMB marking card; as card; MARKED; 1 ... 10 (10x); not stretchable; Horizontal marking; snap-on type; white



Item No.: 793-566
WMB marking card; as card; MARKED; 1 ... 50 (2x); not stretchable; Horizontal marking; snap-on type; white



Item No.: 793-503
WMB marking card; as card; MARKED; 11 ... 20 (10x); not stretchable; Horizontal marking; snap-on type; white



Item No.: 793-504
WMB marking card; as card; MARKED; 21 ... 30 (10x); not stretchable; Horizontal marking; snap-on type; white



Item No.: 793-505
WMB marking card; as card; MARKED; 31 ... 40 (10x); not stretchable; Horizontal marking; snap-on type; white



Item No.: 793-506
WMB marking card; as card; MARKED; 41 ... 50 (10x); not stretchable; Horizontal marking; snap-on type; white



Item No.: 793-501
WMB marking card; as card; not stretchable; plain; snap-on type; white



Item No.: 2009-115
WMB-Inline; for Smart Printer; 1500 pieces on roll; stretchable 5 - 5.2 mm; plain; snap-on type; white

1.1.6.4 Marking device



Item No.: 210-110
Fiber-tip pen

1.1.6.5 Marking strip



Item No.: 2009-110
Marking strips; for Smart Printer; on reel; not stretchable; plain; snap-on type; white

1.1.6.6 Protective marker cover



Item No.: 209-184
Protection cover; transparent

1.1.7 Tool

1.1.7.1 Operating tool



Item No.: 210-719
Operating tool; Blade: 2.5 x 0.4 mm; with a partially insulated shaft

Installation Notes

Commoning



Removing a jumper via screwdriver.

Marking



Marking using WMB Multi markers and group marker carriers.