

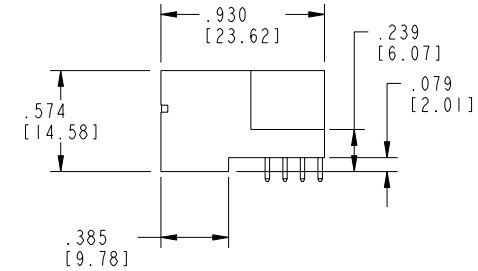
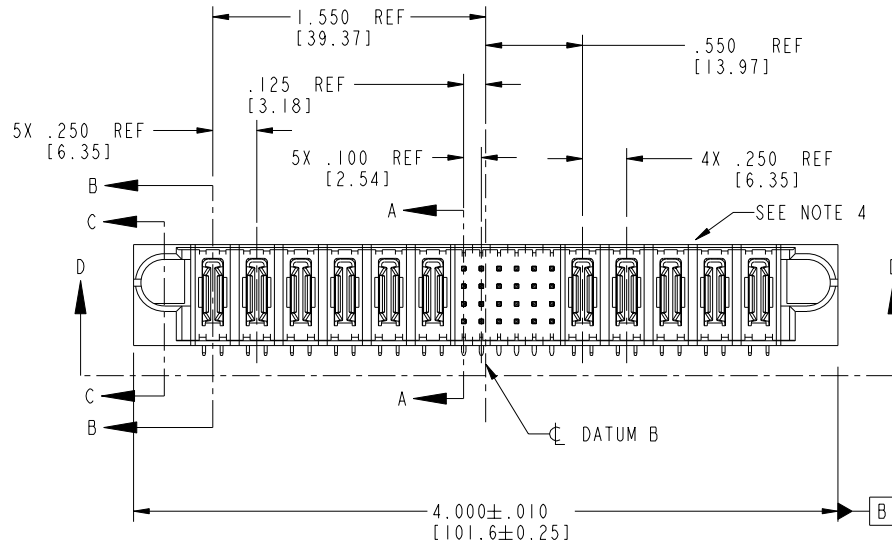


Tous droits strictement réservés. Reproduction ou communication à des tiers interdite sous quelque forme que ce soit sans autorisation écrite du propriétaire. Propriété de FCI. Droits de reproduction FCI.

**A**  
**FCI**

All rights strictly reserved. Reproduction or issue to third parties in any form whatever is not permitted without written authority from the proprietor. Property of FCI. Copyright FCI.

PRODUCT NO.	ROWS	POWER						SIGNAL						POWER						E2
		E1	P1	P2	P3	P4	P5	P6	1	2	3	4	5	6	P7	P8	P9	P10	P11	
51730-038-- NOTE:3	D C B A		PA	PA	PA	PA	PA	PA	UUUUUU	UUUUUU	UUUUUU	UUUUUU	UUUUUU	UUUUUU	PA	PA	PA	PA	PA	



CODE	DIM "M" MATING LENGTH	CONTACT TYPE
E	.220 [5.59]	SIGNAL
F	.220 [5.59]	SIGNAL
G	.220 [5.59]	SIGNAL
H	.220 [5.59]	SIGNAL
R	.270 [6.86]	SIGNAL
S	.270 [6.86]	SIGNAL
T	.270 [6.86]	SIGNAL
U	.270 [6.86]	SIGNAL
PA	N/A [N/A]	POWER

mat'l code				SEE NOTE 2		tolerances unless otherwise specified		CUSTOMER		<b>A</b> <b>FCI</b>		www.fciconnect.com	
ltr	ecn no.	dr	date	linear	angles	dr	engr	chr	appd	COPY	projection	title	product family
A	V12534	JWS	11/17/01			J. SHAFFER	M. MOSTOLLER	M. MOSTOLLER	M. MOSTOLLER			6P + 24S + 5P	PwrBlade
B	DG05-0560	CS	12/26/05									RIGHT ANGLE SOLDER HEADER	
						11/17/01	11/16/01	11/17/01	11/17/01	INCH/MM	scale	size	dwg no
										1:1		A	51730-038
sheet index	revision	B	B	B	B								
sheet	sheet	1	2	3	4								

cage code 22526 4

PDM: Rev:B

STATUS Released

Printed: Oct 08, 2006

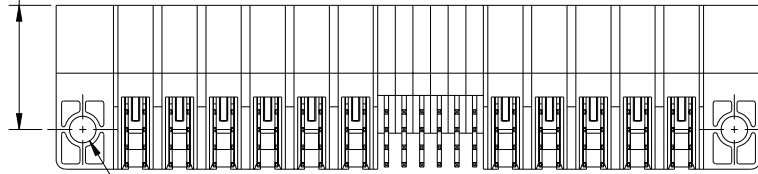
Tous droits strictement réservés. Reproduction ou communication a des tiers interdite sous quelque forme que ce soit sans autorisation écrite du propriétaire. Propriété de c FCI. Droits de reproduction FCI.

**FCI**

All rights strictly reserved. Reproduction or issue to third parties in any form whatever is not permitted without written authority from the proprietor. Property of FCI. Copyright FCI.

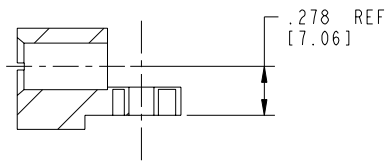
PRODUCT NUMBER  
51730-038\_-  
NOTE: 3

2X .705  
[17.91]

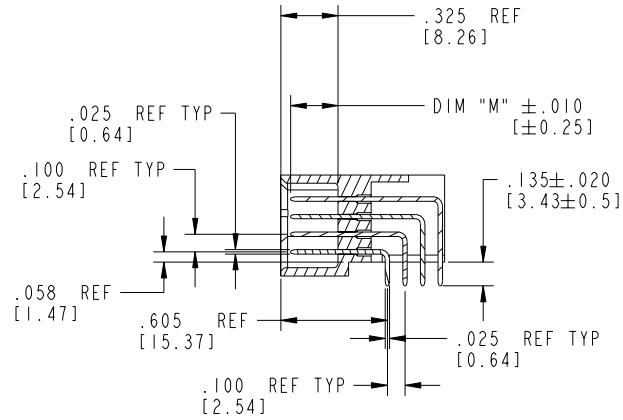


2X Ø.150 REF  
[3.81]

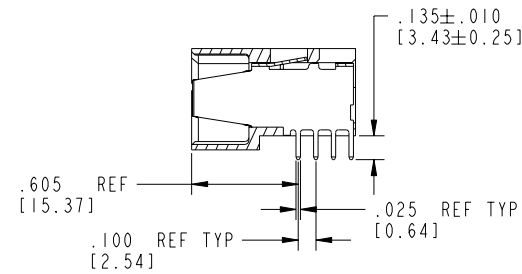
SECTION D-D



SECTION C-C



SECTION A-A



SECTION B-B

mat'l code				SEE NOTE 2		tolerances unless otherwise specified		CUSTOMER		<b>FCI</b> www.fciconnect.com	
litr	ecr no.	dr	date	linear	projection	angles	dr	engr	chr	appd	title
B											
											6P + 24S + 5P
											RIGHT ANGLE SOLDER HEADER
											product family
											PwrBlade
											code
											213
											sheet
											2 of 4
sheet index	revision	sheet									

cage code 22526

PDM: Rev:B

STATUS Released

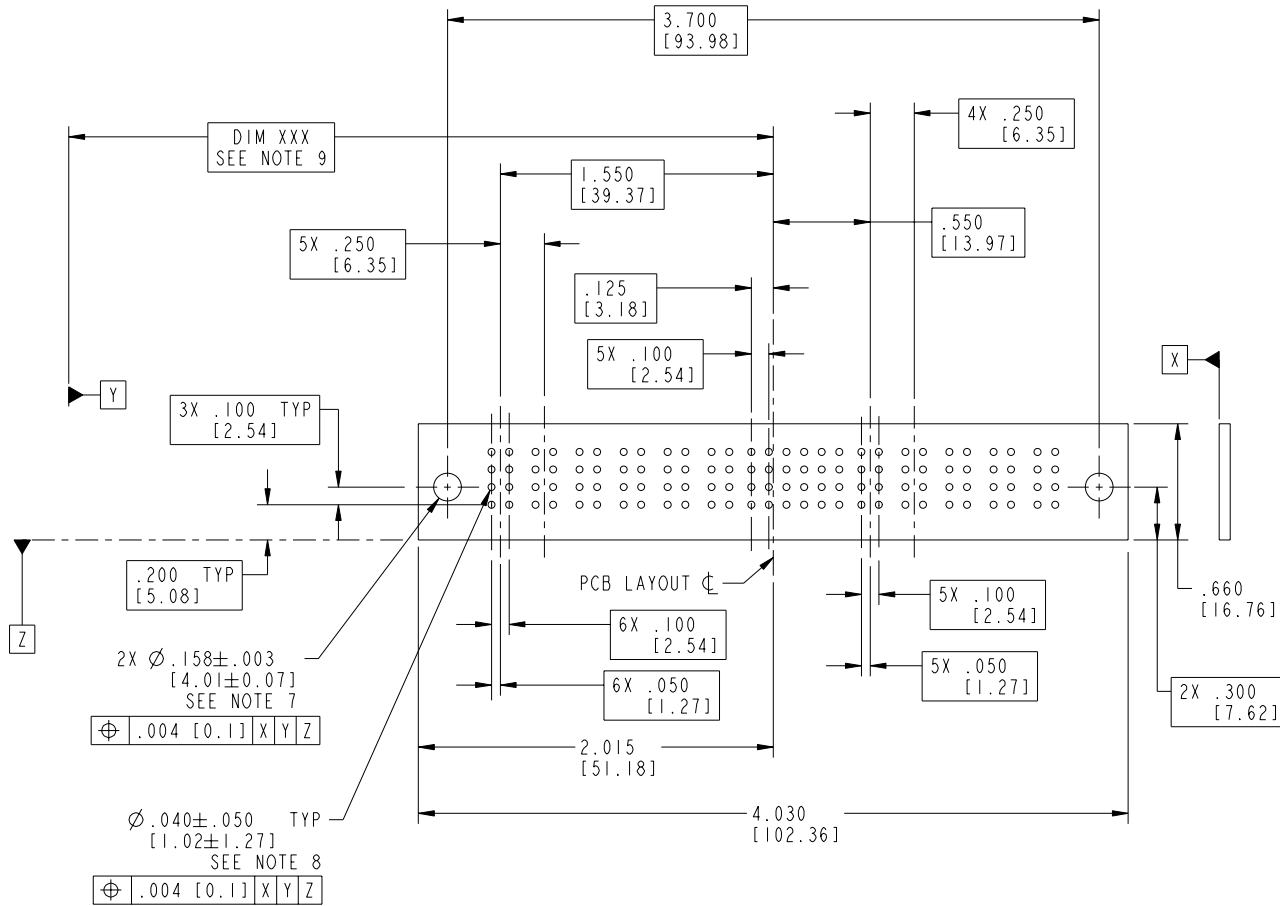
Printed: Oct 08, 2006

Tous droits strictement réservés. Reproduction ou communication à des tiers interdite sous quelque forme que ce soit sans autorisation écrite du propriétaire. Propriété de c FCI. Droits de reproduction FCI.

**FCI**

All rights strictly reserved. Reproduction or issue to third parties in any form whatever is not permitted without written authority from the proprietor. Property of FCI. Copyright FCI.

PRODUCT NUMBER  
51730-038\_-  
NOTE: 3



RECOMMENDED PCB LAYOUT

mat'l code				tolerances unless otherwise specified		CUSTOMER	
ltr	ecn no.	dr	date	linear	projection	COPY	
B				linear	projection	title	
				angles	projection	6P + 24S + 5P	
				dr	projection	RIGHT ANGLE SOLDER HEADER	
				enrg	projection	product family	
				chr	projection	PwrBlade	
				appd	projection	code	
					projection	213	
sheet index	revision	sheet			scale	sheet	
					1:1	3 of 4	
						cage code	
						22526	

Pro/E

PDM: Rev:B

STATUS Released

Printed: Oct 08, 2006

Tous droits strictement reserves. Reproduction ou communication a des tiers interdite sous quelque forme que ce soit sans autorisation écrite du propriétaire. Propriete de c FCI. Droits de reproduction FCI.

**A**  
**FCI**

All rights strictly reserved. Reproduction or issue to third parties in any form whatever is not permitted without written authority from the proprietor. Property of FCI. Copyright FCI.

PRODUCT NUMBER

51730-038\_-  
NOTE:3

NOTES:

1. DIMENSIONS AND TOLERANCES ARE IN ACCORDANCE WITH  
ASME Y14.5M, 1994 UNLESS OTHERWISE SPECIFIED.

CONNECTORS NOTES:

- ② HOUSING MATERIAL: UL 94 V-0 GLASS FILLED  
HIGH TEMP THERMO PLASTIC  
POWER CONTACT MATERIAL: COPPER ALLOY  
SIGNAL PIN MATERIAL: COPPER ALLOY

3. PLATING:

51730-038,51730-038LF,PLATING SPEC SEE PRINT:100064183.

- ④ "MANUFACTURER" NAME, P/N, AND DATE CODE TO APPEAR ON  
THIS SURFACE.

5. PRODUCT SPECIFICATION GS-12-149.

PCB - NOTES:

6. ALL HOLE DIAMETERS ARE FINISHED HOLE SIZE.
- ⑦ HOLD DOWN THROUGH HOLES ARE UNPLATED.
- ⑧  $\varnothing .0453 \pm 0.0010$  [1.151 $\pm$ 0.025] DRILLED HOLES PLATED WITH  
0.0003 [0.008] MIN SnPb OVER .001 [0.03]  
TO .003 [0.08] Cu PLATING TO ACHIEVE  
 $\varnothing .040 \pm .003$  [1.02 $\pm$ .07] HOLE.
- ⑨ "DIM XXX" TO BE DETERMINED BY THE CUSTOMER.

mat'l code				SEE NOTE 2				tolerances unless otherwise specified				CUSTOMER				<b>A</b> <b>FCI</b> www.fciconnect.com			
ltr	ecn no.	dr	date	linear	.XX+.01/0.X+.0.3			COPY				projection				title			
B					.XXX+.005/0.XX+.0.13							6P + 24S + 5P							
				angles	.XXX+.0020/0.XXX+.0.051							RIGHT ANGLE SOLDER HEADER							
					0°±2°														
				dr	J. SHAFFER	11/17/01	INCH/MM				product family								
				engr	M. MOSTOLLER	11/16/01	1:1				PwrBlade								
				chr	M. MOSTOLLER	11/17/01					code								
				appd	M. MOSTOLLER	11/17/01					213								
sheet index		revision sheet										size							
												dwg no							
												A							
												51730-038							
												sheet							
												4 of 4							
												cage code							
												22526							
												4							

Pro/E

PDM: Rev:B

STATUSReleased

Printed: Oct 08, 2006