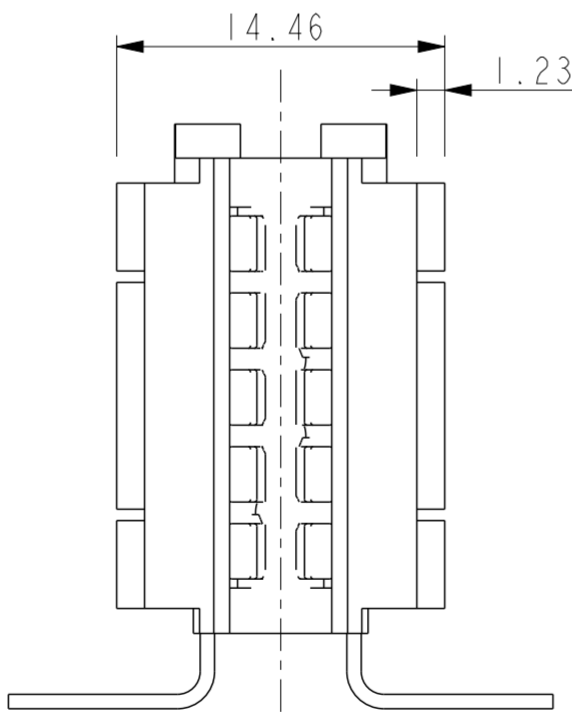
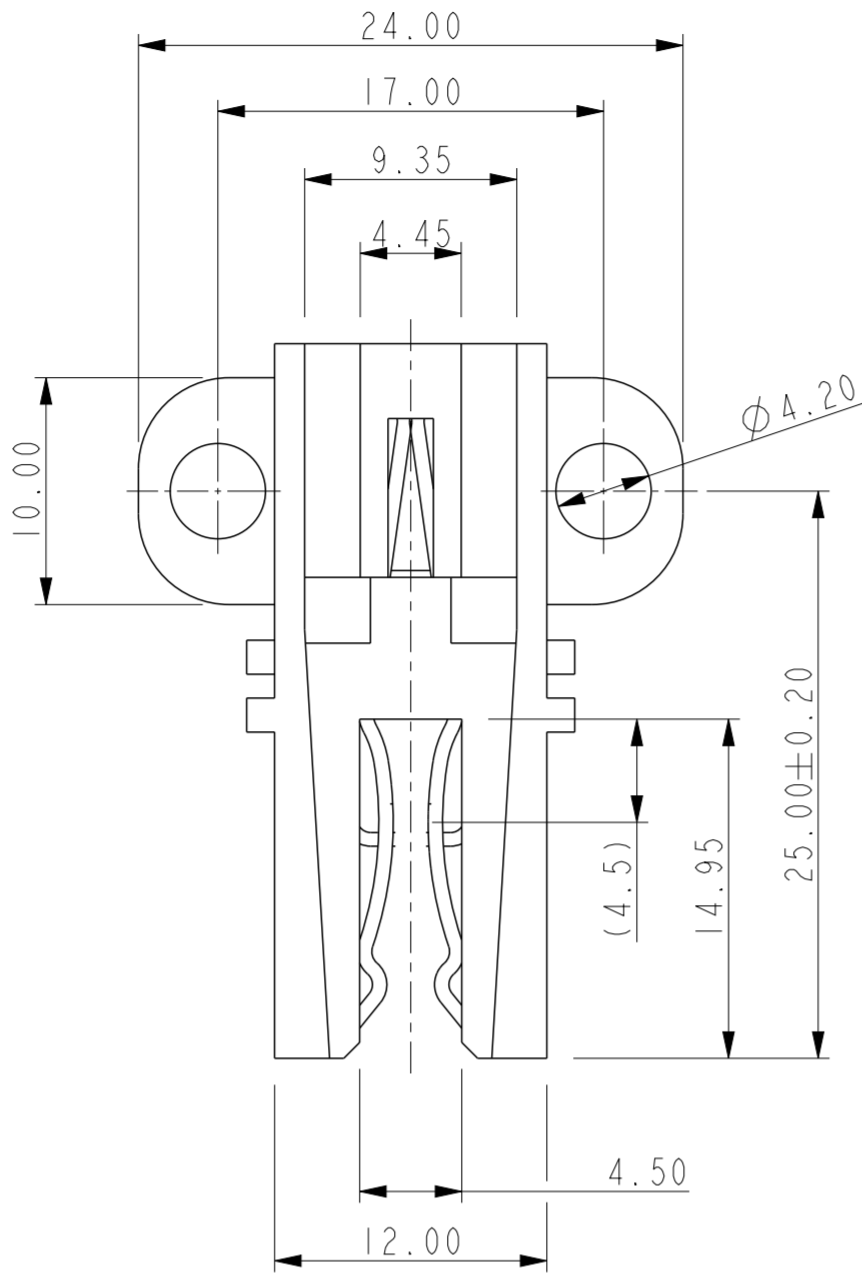
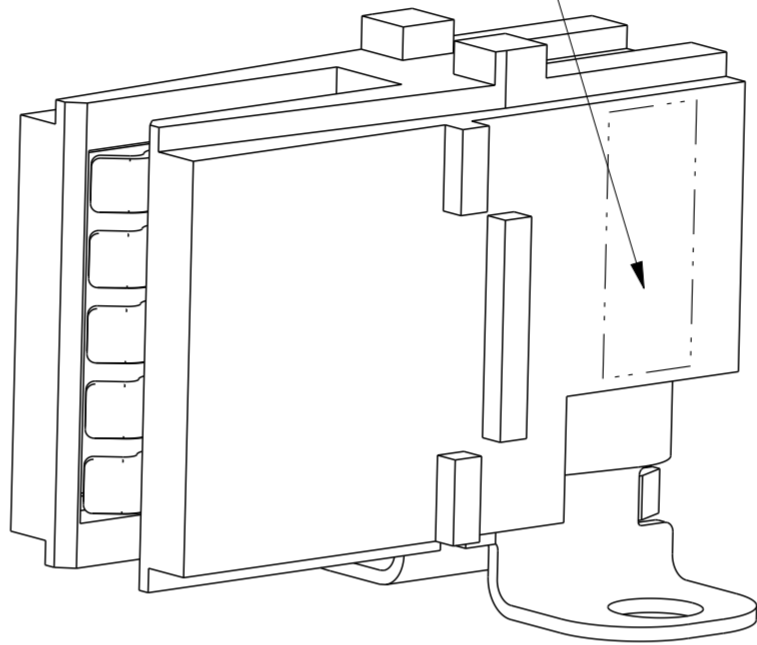


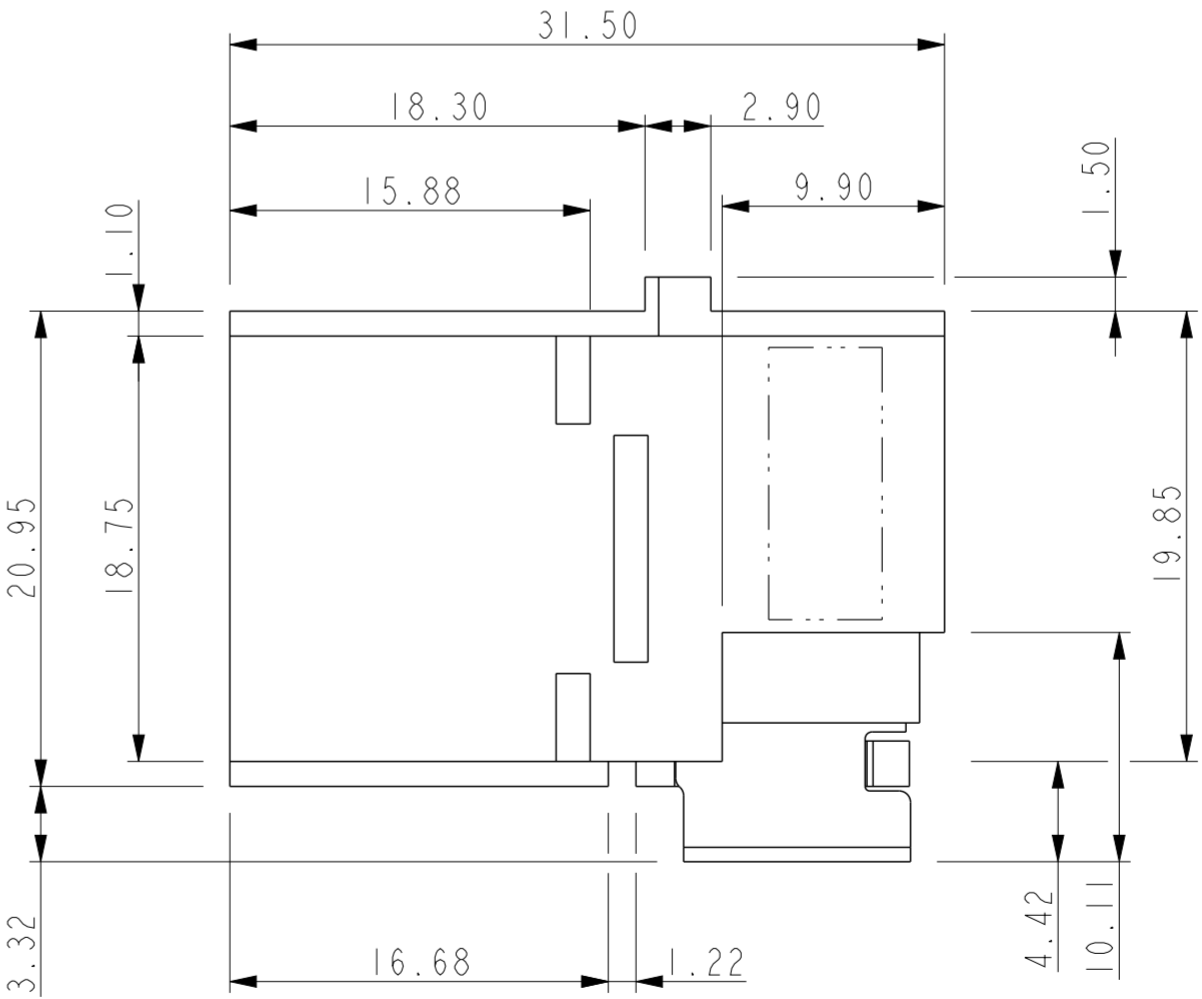
PRODUCT NUMBER	DESCRIPTION(PLATING)
10146303-S01LF	CONTACT AREA:AGT PLATING-3.0um SILVER OVER 1.27um NICKEL





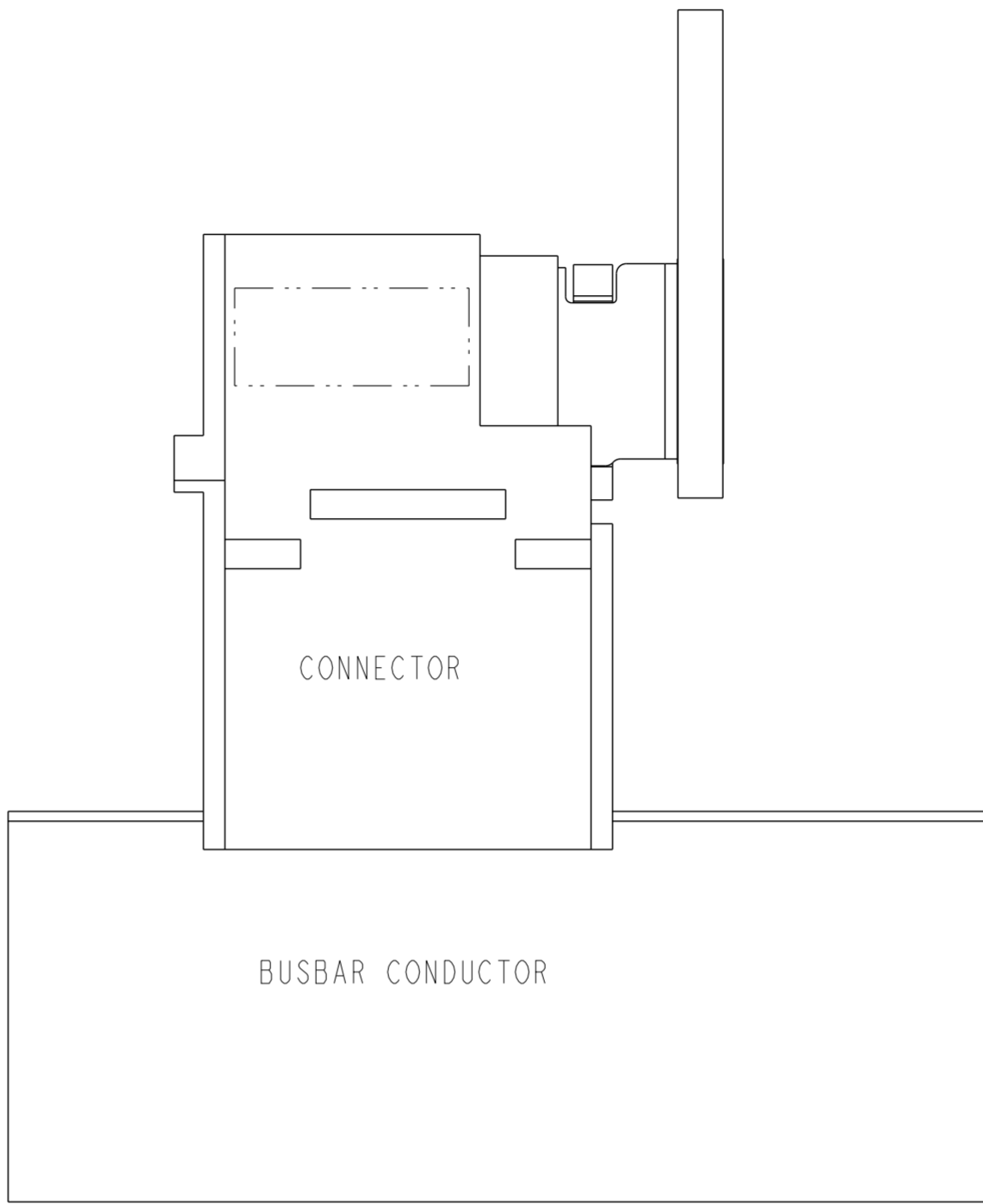
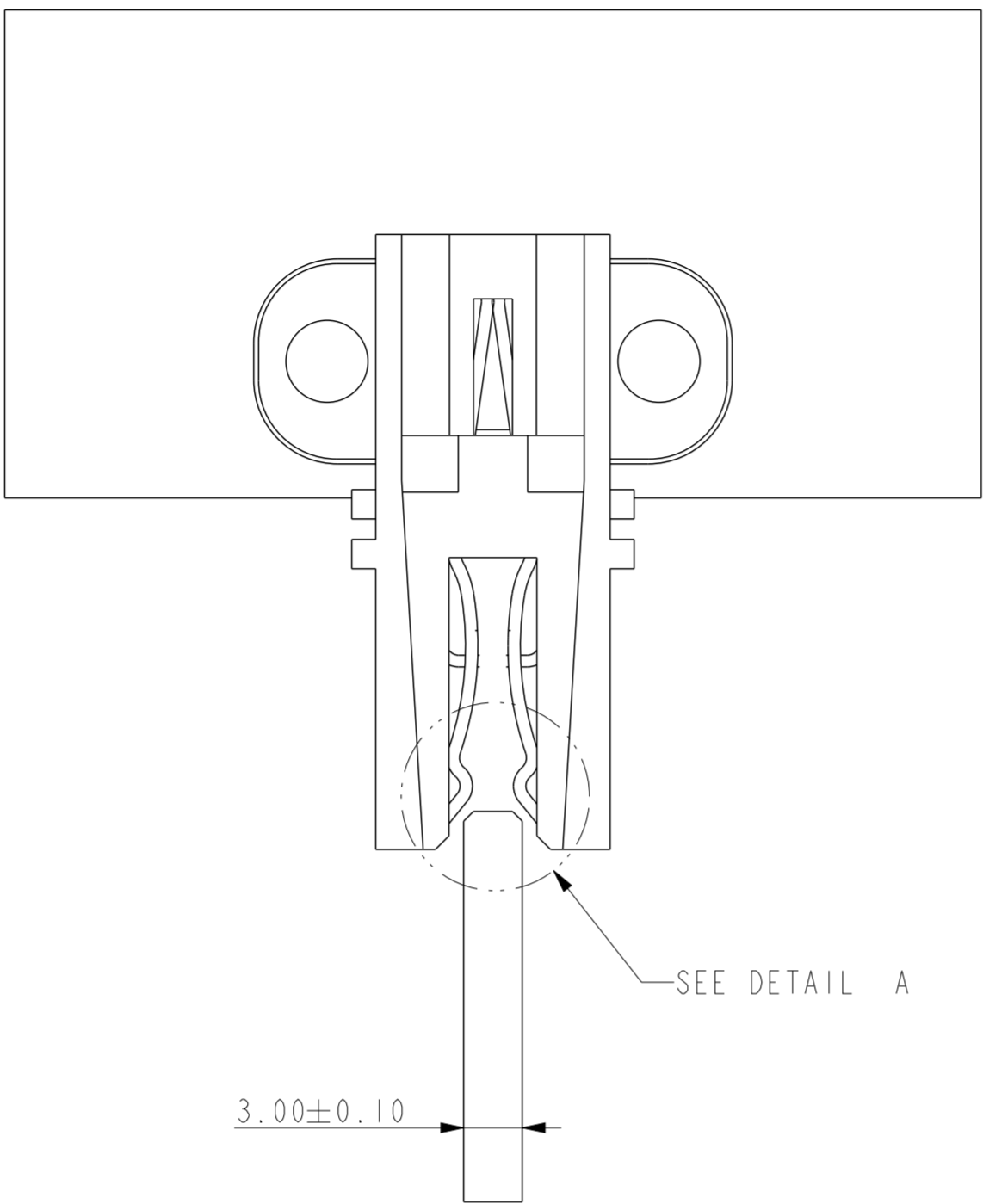
FCI MARK AND DATE CODE



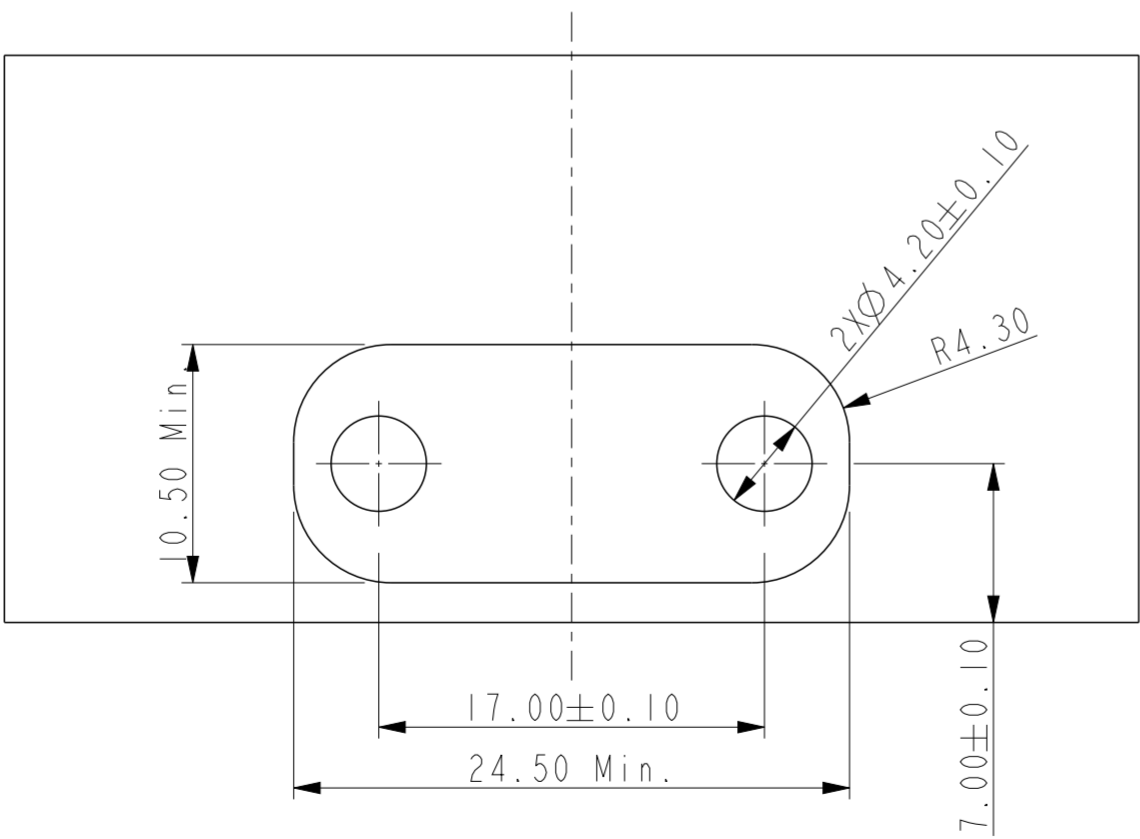
- NOTES:
- 1.CONNECTOR HOUSING:  
HIGH TEMPERATURE THERMOPLASTIC GLASS FILLED,UL 94V-0  
TERMINALS: COPPER ALLOY
  - 2.FINISHES:  
SEE PRODUCT NUMBER
  - 3.PRODUCT SPECIFICATION: GS-12-1179  
APPLICATION SPECIFICATION: GS-20-0396  
PACKING SPECIFICATION: GS-14-2376
  - 4.RECOMMEND INSIDE HEXANOAL HEAD SCREW M4.0
  - 5.THIS PRODUCT MEETS EUROPEAN UNION DIRECTIVES  
AND OTHER COUNTRY REGULATIONS AS DESCRIBED  
IN GS-47-0004.



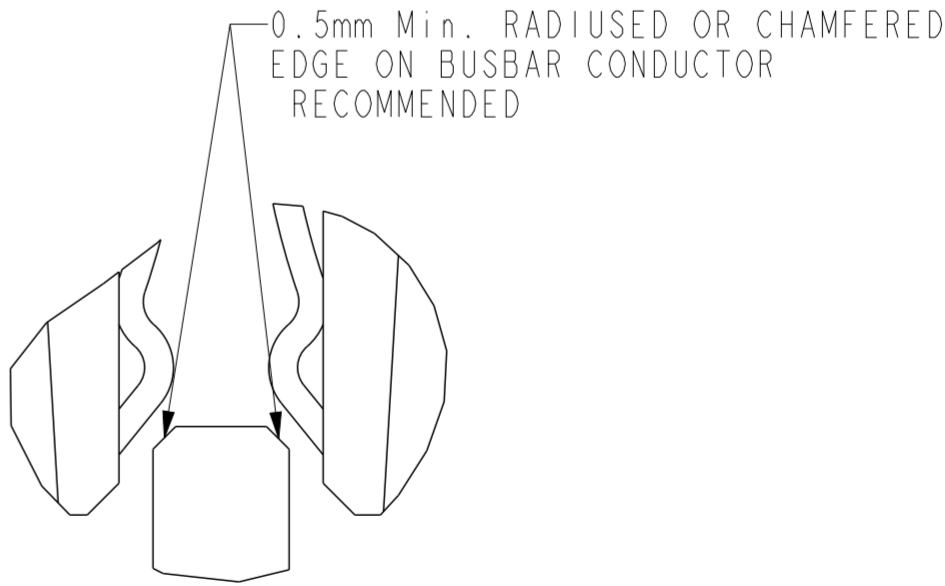
spec ref		-		dr		Koma Peng		2018/02/02		projection		MM		size		A2		scale		3:1			
tolerance std		ISO 406		ISO 1101		eng		Koma Peng		2018/03/12						ecn no		-		rel level		Released	
TOLERANCES UNLESS OTHERWISE SPECIFIED		chr		Feng Zheng		2018/03/07																	
				appr		Pei-Ming Zheng		2018/03/12		product family													
surface		-		linear		0.X		±0.30		Amphenol FCI		Barklip R/A CONNECTOR		dwg no		10146303		rev		A			
				0.XX		±0.25																	
				0.XXX		±0.10																	
ISO 1302		angular		0°		±2°		www.fci.com		cat. no.		-		Product - Customer Drw				sheet 1 of 2					





PCB AND BUSBAR-CONDUCTOR  
IN THESE VIEWS ARE SHOWN FOR REFERENCE ONLY



RECOMMENDED PCB LAYOUT  
THICKNESS 1.5-2.0mm



DETAIL A  
SCALE 6:1

spec ref -				dr Koma Peng 2018/02/02		projection		MM		size A2		scale 3:1			
tolerance std ISO 406 ISO 1101				eng Koma Peng 2018/03/12						ecn no -					
TOLERANCES UNLESS OTHERWISE SPECIFIED				chr Feng Zheng 2018/03/07						rel level Released					
				appr Pei-Ming Zheng 2018/03/12		product family									
surface -  ISO 1302		linear		0.X ±0.30		Amphenol FCI		Barklip R/A CONNECTOR Screwed Mount Type				dwg no 10146303		rev A	
				0.XX ±0.25											
				0.XXX ±0.10											
		angular 0° ±2°		www.fci.com		cat. no. -		Product - Customer Drw				sheet 2 of 2			