

# BULLS EYE® 22 POSITION ASSEMBLY

## SPECIFICATIONS

For complete specifications see [www.samtec.com?BARA](http://www.samtec.com?BARA)

### RF Connector:

**Outer Contact Material:**

Brass (SMA), Gold (SMP)

### Center Contact Material:

Brass (SMA Plug)

BeCu (SMA & SMP Jack)

### Insulator Material:

PTFE

### Operating Temperature:

-65 °C to +165 °C

### Impedance:

50 Ω

### RoHS Compliant:

Yes

### MWC-2550-01

### Cable:

#### Cable Type:

Low Loss Microwave Coax

#### Gauge:

25 AWG Silver plated Copper

#### Dielectric:

Solid FEP

#### Jacket Material:

FEP

#### Bend Radius:

9 mm

#### Impedance:

50 Ω ±1 Ω

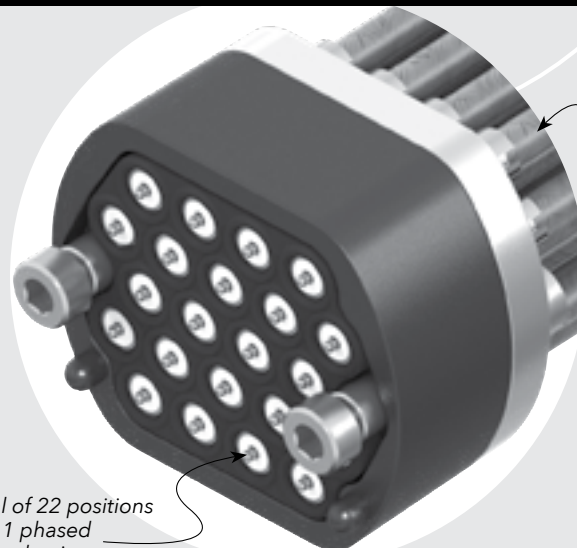
#### Propagation Delay:

3.84 nsec/meter

#### Capacitance:

75.4 pF/meter

**Mates with:**  
SMA, SMP



25 AWG  
cable

A total of 22 positions  
with 11 phased  
matched pairs

**BARA**

**END 2  
CONNECTOR**

**PHASE  
MATCHING**

**11**

**OVERALL  
LENGTH**

Specify  
END 2 OPTION  
from chart

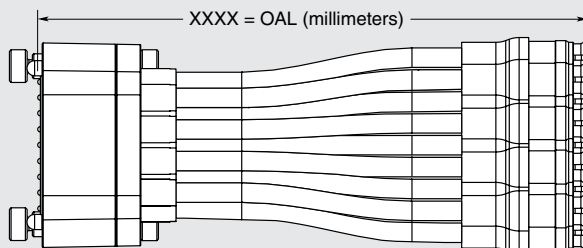
**-02**  
= 2.0 Pico-second  
**-05**  
= 5.0 Pico-second  
**-10**  
= 10.0 Pico-second

**-11**  
= Number  
of phase  
matched  
pairs

**-"XXXX"**  
= Overall Length  
in millimeters  
**-0100**  
(100 mm) 3.94"  
to **-9999**  
(9999 mm) 393.7"

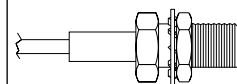
## OTHER SOLUTIONS

- Replacement elastomer gaskets available

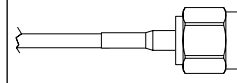


### END 2 OPTIONS

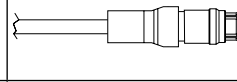
**-01BJ1 = SMA**  
Bulkhead Jack  
(30 μ" (0.76 μm) Gold  
on Center Contact,  
Gold Flash on Shell)



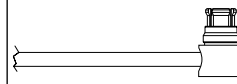
**-01SP1 = SMA**  
Straight Plug  
(30 μ" (0.76 μm) Gold  
on Center Contact,  
Gold Flash on Shell)



**-00SJ7 = SMP**  
Straight Jack  
(10 μ" (0.25 μm) Gold  
on Center Contact,  
Gold Flash on Shell)



**-00RJ7 = SMP**  
Right-Angle Jack  
(10 μ" (0.25 μm) Gold  
on Center Contact,  
Gold Flash on Shell)



**Note:**  
Some lengths, styles and  
options are non-standard,  
non-returnable.